

£795 pcm

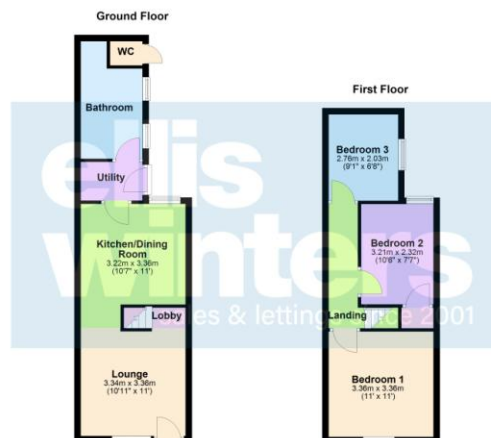
8 York Terrace, Wisbech, PE13 3AZ



To arrange a viewing call us now on 01354 701000

Deposit £917

Located close to the town centre this home is nestled away down a private walkway and boast light and airy lounge, kitchen with oven and hob, utility area and ground floor bathroom. To the first floor there are three good size bedrooms and outside there is a low maintenance courtyard. EPC C



ellis winters
sales & lettings since 2001

£795 pcm

8 York Terrace, Wisbech, PE13 3AZ



Located close to the town centre this home is nestled away down a private walkway and boast light and airy lounge, kitchen with oven and hob, utility area and ground floor bathroom. To the first floor there are three good size bedrooms and outside there is a low maintenance courtyard.

Ground Floor

Lounge

3.36m (11') x 3.34m (10'11")

Window to front, radiator, stairs to first floor and landing.



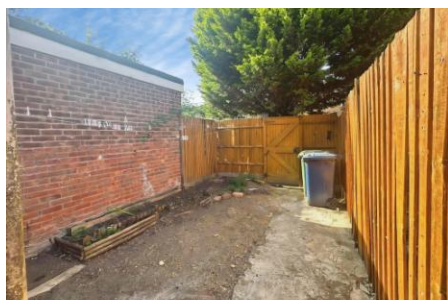
Kitchen/Dining Room

3.36m (11') x 3.22m (10'7")

Wall and base units with integral oven, hob and hood, sink unit with mixer tap, window to rear, radiator.

Utility

Base units, space for washing machine, door to garden.



Bathroom

Fitted with bath with shower over, wash hand basin and WC, gas fired boiler, two windows to side.

First Floor & Landing

Bedroom 1

3.36m (11') x 3.36m (11')

Window to front, radiator.



Bedroom 2

3.21m (10'6") x 2.32m (7'7")

Window to rear, radiator, cupboard.

Bedroom 3

2.76m (9'1") x 2.03m (6'8")

Window to side, radiator.



Outside there is a small courtyard garden to the rear with outside WC.

Freehold

Council tax band A

ellis winters 52 High Street, March, Cambridgeshire, PE15 9JR

Tel: 01354 701000 Email: info@elliswinters.co.uk www.elliswinters.co.uk