



Coda Residences
6 York Place, SW11

CHESTERTONS





Exquisite two-bedroom apartment on the 17th floor of Coda Residences with stunning views of the river and the city. The property is excellently furnished to the highest standard and enjoys a private balcony and high-quality furniture. Parking is available via separate negotiation.

The dual aspect open plan kitchen/reception room offers striking views of London through floor to ceiling windows that open up onto the large private balcony. The property contains two large double bedrooms with the principal bedroom benefitting from an en-suite and built-in storage. The second bedroom is also very generous with built-in wardrobes and benefits from use of the family bathroom adjacent. Furthermore, there is excellent storage throughout with in-built wardrobes and hallway cupboards.

Coda Residences is ideally located on the South bank of the River Thames, just a short walk to Clapham Junction (6 minutes to Victoria & 8 minutes to Waterloo). The building benefits from a 24-hour concierge, a resident gym, a residents meeting room and private workspaces.

Please contact Chestertons Battersea Park & Nine Elms for more information and to arrange a viewing.

- Parking Available
- River Views
- Private Balcony
- Two Large Bedrooms
- 24 Hour Concierge
- Residents Gym

£3,700 pcm

Additional tenant charges apply (fees apply to non-AST tenancies only)

Tenancy Agreement Fee: £300

References per Tenant/Guarantor: £60

Inventory check (approx. £100 – £250 inc. VAT)

[chestertons.co.uk/property-to-rent/applicable-fees](https://www.chestertons.co.uk/property-to-rent/applicable-fees)

Score	Energy rating	Current	Potential
92+	A		
81-91	B	85 B	85 B
69-80	C		
55-68	D		
39-54	E		
21-38	F		
1-20	G		

Minimum Term: 12 months
Deposit Required: £4,269.23
Local Authority: London Borough of Wandsworth
Council Tax Band: F
EPC Rating: B
Furnished

Chestertons Battersea Park & Nine Elms Lettings

62-64 Battersea Bridge Road

London

SW11 3AG

batterseapark@chestertons.co.uk

02030408269

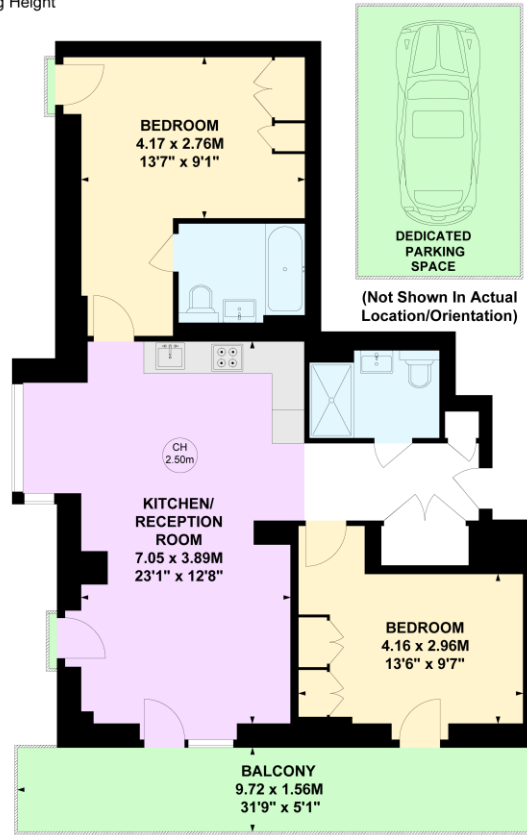
[chestertons.co.uk](https://www.chestertons.co.uk)

York Place, SW11

Approximate gross internal area

79.52 sq m / 856 sq ft

Key :
CH - Ceiling Height



Seventeen Floor

This plan is not to scale and must be used as layout guidance only. All measurements and areas are approximate and should not be relied upon to provide accurate information. This plan must not be relied upon when making property valuations, design considerations or any other such relevant decisions. We accept no responsibility or liability (whether in contract, tort or otherwise) in relation to any loss whatsoever arising from or in connection with any use of this plan or the adequacy, accuracy or completeness of it or any information within it.

Chesterton UK Services Limited trading as Chestertons for themselves and for the vendor of this property whose agents they are, give notice that (i) these particulars do not constitute any part of an offer or contract, (ii) all statements contained within these particulars are made without responsibility on the part of Chestertons or the vendor, (iii) whilst made in good faith, none of the statements contained within these particulars are to be relied upon as a statement or representation of fact, (iv) any intending purchasers must satisfy themselves by inspection or otherwise as to the correctness of each of the statements contained within these particulars, (v) the vendor does not make or give either Chestertons or any person in their employment any authority to make or give representation or warranty whatsoever in relation to this property. Wide angle lenses may be used. ©Copyright Chestertons | Chesterton Global Ltd | Registered Office 40 Connaught Street, Hyde Park, London W2 2AB Registered Company Number 05334580.



This paper is
100% recyclable