



**Price**  
**£275,000**

**Freehold**

2x  1x  1x 

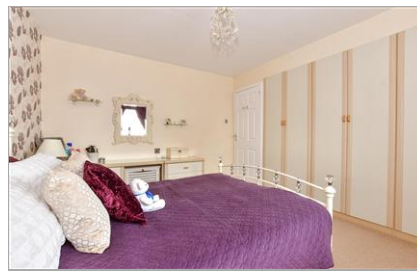
**Kinchington Road,  
Newport, Isle of Wight,  
PO30**

**OVER 60?**

Secure this property  
for up to **59% less!**

**Pittis**   
Helping you move forwards





## Main features

- **Extended semi detached bungalow on generous plot**
- **Quiet location set back from the road**
- **Immaculately presented throughout**
- **Separate lounge and dining room**
- **Low maintenance garden to the rear**
- **En-bloc garage and allocated parking space**

## Accommodation

### GROUND FLOOR

Porch Area

Lounge: 16'1 x 14'10 (4.91m x 4.52m)

Kitchen: 9'4 x 8'0 (2.85m x 2.44m)

Dining Room: 9'3 x 5'7 (2.82m x 1.70m)

Conservatory: 7'7 x 7'1 (2.31m x 2.16m)

Rear Hallway

Shower Room

Bedroom 2: 12'4 x 9'4 (3.76m x 2.85m)

Bedroom 1 : 12'3 x 10'7 (3.74m x 3.23m)

### OUTSIDE

Front Garden

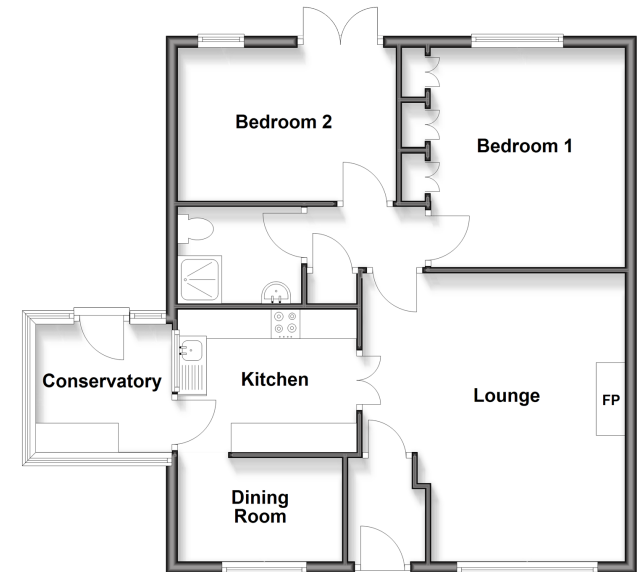
Rear Garden

Garage en-bloc

Allocated Parking

### Ground Floor

Approx. 73.7 sq. metres (793.8 sq. feet)



**Call Newport - 01983 528888 ■ [pittis.co.uk](http://pittis.co.uk)**

■ Legal advice should be taken to verify fixtures/fittings, planning, alterations and/or lease details  
 ■ Through a Homewise Home For Life Plan people aged 60+ can secure this property for up to 50% less, by purchasing a Lifetime Lease.

■ Appliances & services are untested, dimensions are approximate and floor plans are not to scale