



## 28 St. Marys Close

Easington Village, Peterlee, SR8 3BB

**Offers Over £290,000**



Situated within a quiet and sought-after cul-de-sac in the heart of Easington Village, this attractive four-bedroom detached home offers spacious and well-balanced accommodation, ideal for families seeking a peaceful yet convenient setting.

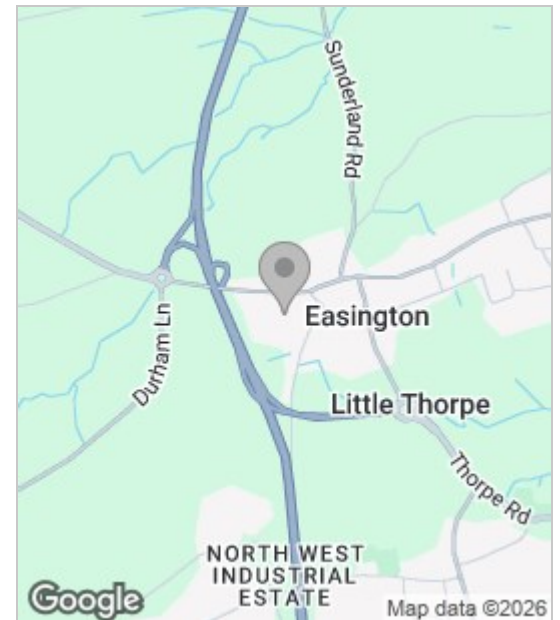


Upon entering the property, you are welcomed into a bright and inviting hallway with access to a convenient ground floor WC and staircase to the first floor. The ground floor boasts a generous dual-aspect lounge, featuring a charming brick fireplace and ample space for relaxing and entertaining. This flows seamlessly into a separate dining room, perfect for family meals or hosting guests, with pleasant views over the rear garden. The modern kitchen is fitted with a range of sleek wall and base units, offering a clean and contemporary feel, along with space for appliances and a breakfast area. A useful internal door provides access to the integral garage, offering additional storage or potential for conversion (subject to permissions).

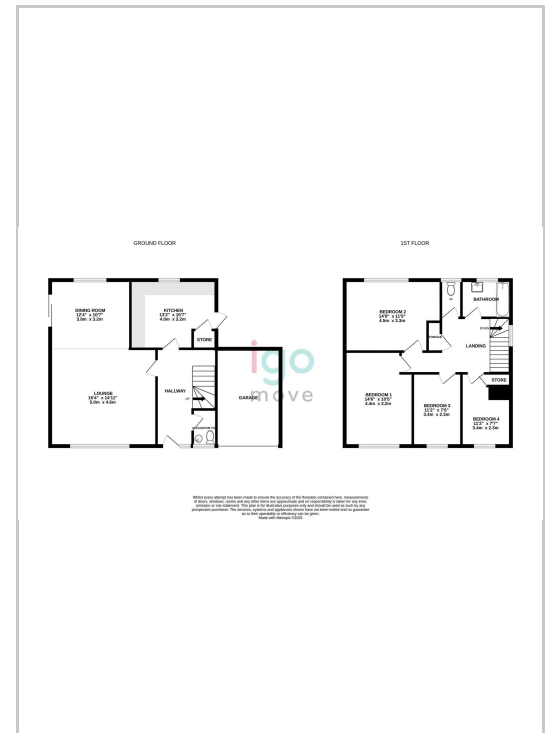
To the first floor, the property offers four well-sized bedrooms, the master of which is located to front aspect and enjoys a generous amount of living space. The accommodation is completed by a family bathroom with a clean, neutral suite and separate WC next door.

Externally, the property benefits from a driveway providing off-street parking leading to the integral garage. To the rear, there is a private enclosed garden, mainly laid to lawn with a paved patio area - perfect for outdoor dining, entertaining, or simply enjoying the peaceful surroundings. Make this home your own and book your viewing today. Igomove are open 7 days a week.

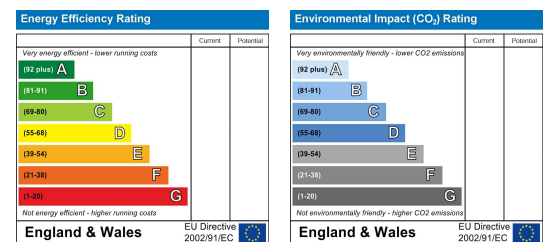
## Area Map



## Floor Plan



## Energy Efficiency Graph



These particulars, whilst believed to be accurate are set out as a general outline only for guidance and do not constitute any part of an offer or contract. Intending purchasers should not rely on them as statements of representation of fact, but must satisfy themselves by inspection or otherwise as to their accuracy. No person in this firm's employment has the authority to make or give any representation or warranty in respect of the property.