

**LONDON
VICTORIA
GROUPS** 

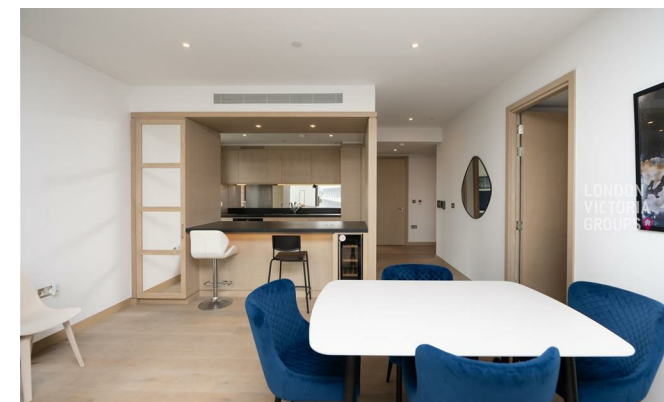


Legacy Building, 1 Viaduct Gardens

, London SW11 7AY

- 2 Bed 2 Bath Apartment
- Master Bedroom with Fitted Wardrobes
- State-of-the-Art Gymnasium
- 4-Minute Walk to Vauxhall Station (Victoria Line)
- CTB-F
- Premium Fitted Kitchen with High-Quality Appliances
- Residents' Swimming Pool & Spa
- 24/7 Professional Maintenance Team
- EPC-B

£4,333 Per Month



Local Authority **Wandsworth**
Council Tax Band **F**
EPC Rating **B**

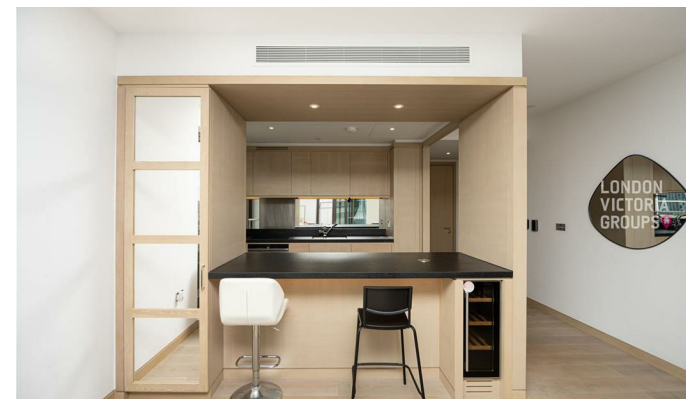
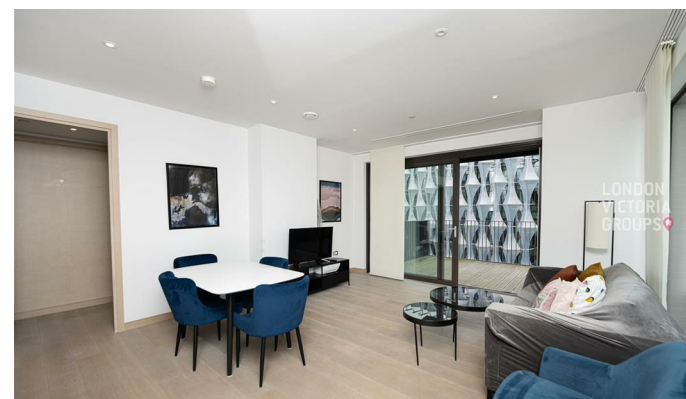


3A1106

2 Bedroom
Internal Area
87.3 sq m / 940 sq ft
Living Area
4660 x 8300mm
Bedroom 1
3420 x 5670mm
Bedroom 2
3215 x 3955mm
Balcony
10.2 sq m / 110 sq ft

3A1106

Agents Note: Whilst every care has been taken to prepare these particulars, they are for guidance purposes only. All measurements are approximate and for general guidance purposes only and whilst every care has been taken to ensure accuracy, they should not be relied upon and potential buyers/tenants are advised to recheck the measurements.



London Office Office
Spaces Victoria, 25 Wilton Road, Pimlico,
London, SW1V 1LW

Contact
020 3084 3094
XL@londonvictoriagroups.co.uk
www.londonvictoriagroups.co.uk