

THE HOME AGENCY

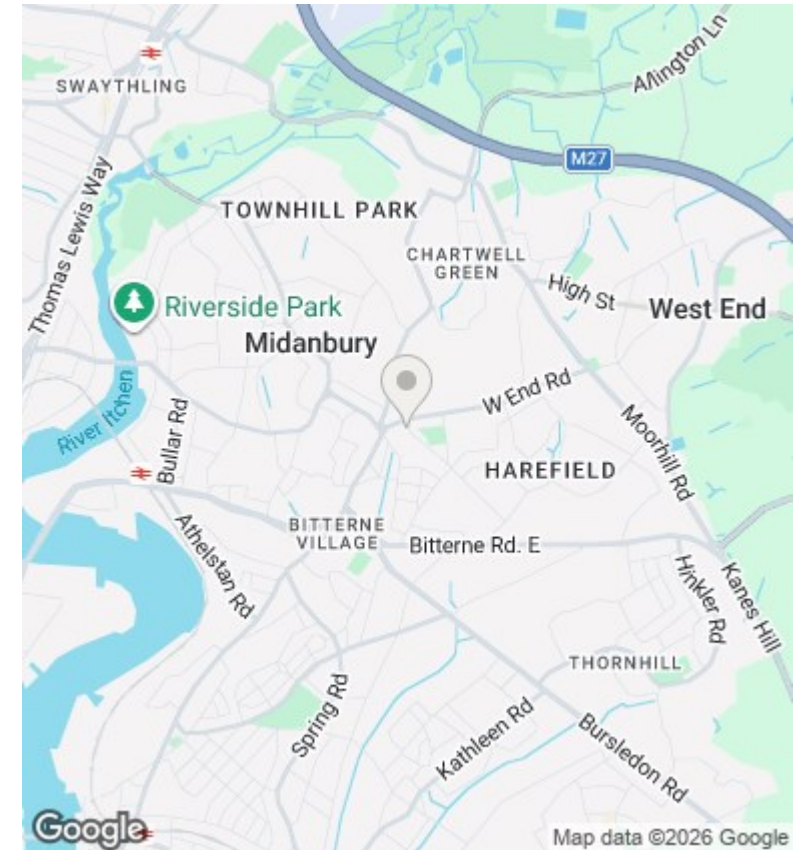
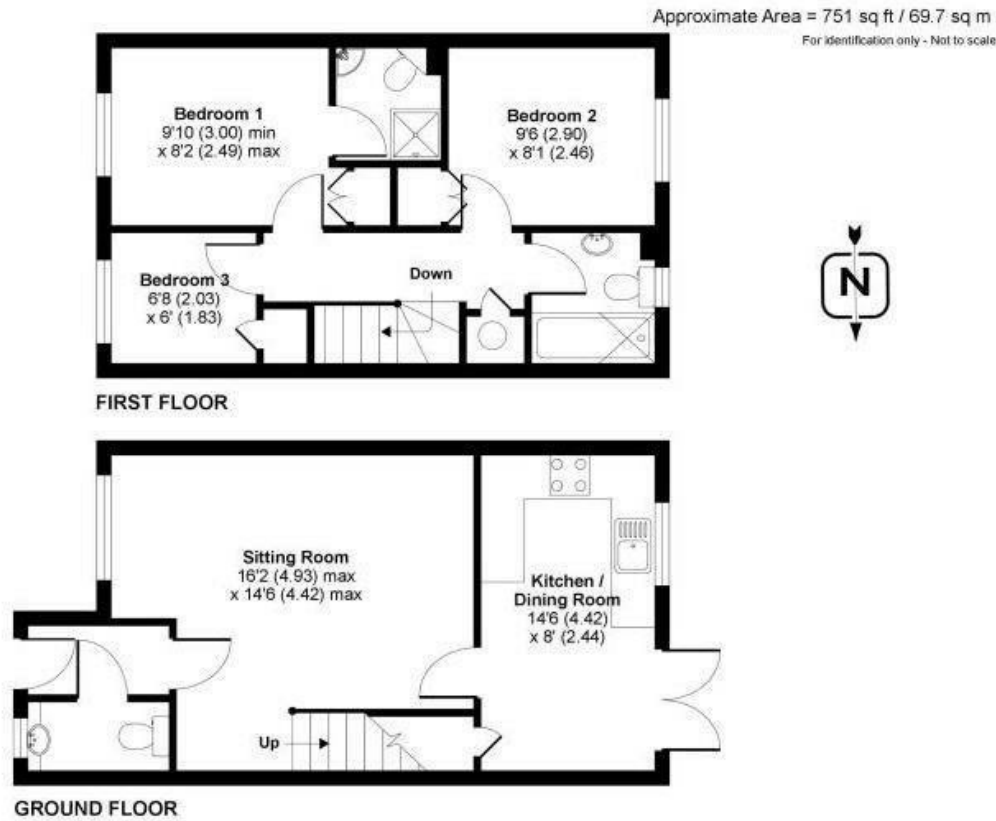
'Passion for property.'



2a Hatley Road, Harefield, Southampton, SO18 6NU

£274,950

- End Terraced House
- Large Lounge
- Two Off Road Parking Spaces
- Double Glazing
- Gas Central Heating
- Garden
- Modern Kitchen Diner
- Ensuite to Master Bedroom
- No Forward Chain



Directions

Viewings

Viewings by arrangement only. Call 02380 632632 to make an appointment.

Council Tax Band

B

EPC Rating:

C

Energy Efficiency Rating		Current	Potential
<i>Very energy efficient - lower running costs</i>			
(92 plus)	A		
(81-91)	B		85
(69-80)	C	71	
(55-68)	D		
(39-54)	E		
(21-38)	F		
(1-20)	G		
<i>Not energy efficient - higher running costs</i>			
England & Wales		EU Directive 2002/91/EC	