

96, Corkland Road, Chorlton, Manchester, M21 8XW



JP&Brimelow
ESTATE AGENTS

Offers In The Region Of £395,000




VIDEO TOUR AVAILABLE A stylishly presented and desirable bay-fronted three-bedroom mews property, secluded at the end of a quiet cul-de-sac on a highly sought-after residential road just off Wilbraham Road in Chorlton. The property is within walking distance of Chorlton village centre, offering a range of independent shops and local amenities, with well-regarded primary and secondary schools close by. St Werburgh's Road Metrolink station is just a five-minute walk away, providing direct access to MediaCityUK and Manchester city centre. The thoughtfully arranged accommodation comprises an entrance hallway, a spacious lounge featuring a bay window to the front, and a stunning fully fitted kitchen/dining room with useful downstairs pantry storage and direct access to the rear lawned garden. To the first floor, a landing leads to two well-proportioned double bedrooms, a three-piece ensuite shower room, a stylish fitted three-piece bathroom suite, and a third bedroom. The property further benefits from a generously sized front garden, larger than typically found in the area, gas-fired central heating, a front driveway providing off-road parking for two vehicles, a partially boarded loft complete with lighting and ladder access, and an enclosed rear lawned garden.





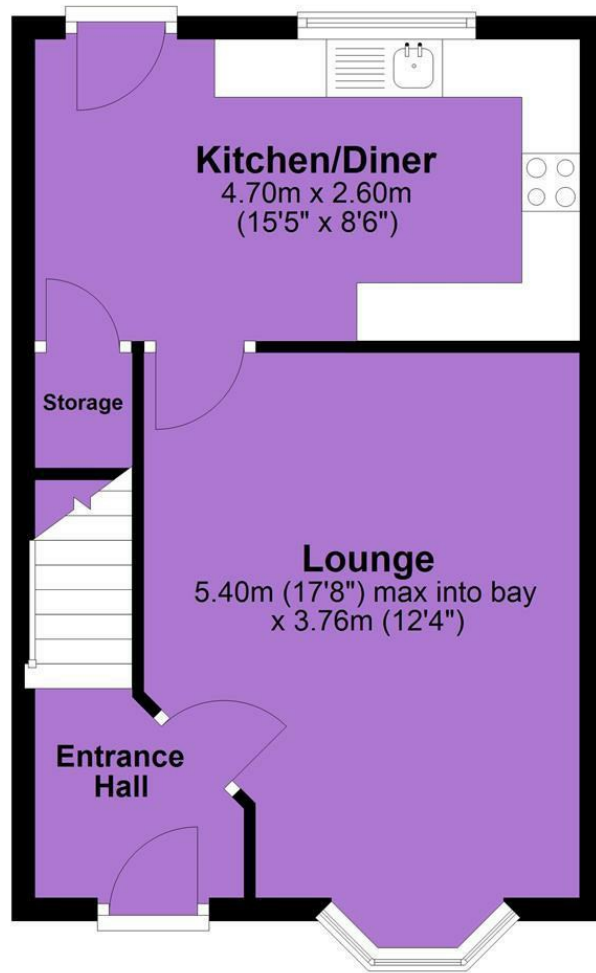
EPC Chart

Energy Efficiency Rating		Current	Potential
Very energy efficient - lower running costs			
(92 plus) A			
(81-91) B			83
(69-80) C		70	
(55-68) D			
(39-54) E			
(21-38) F			
(1-20) G			
Not energy efficient - higher running costs			
England & Wales		EU Directive 2002/91/EC 	

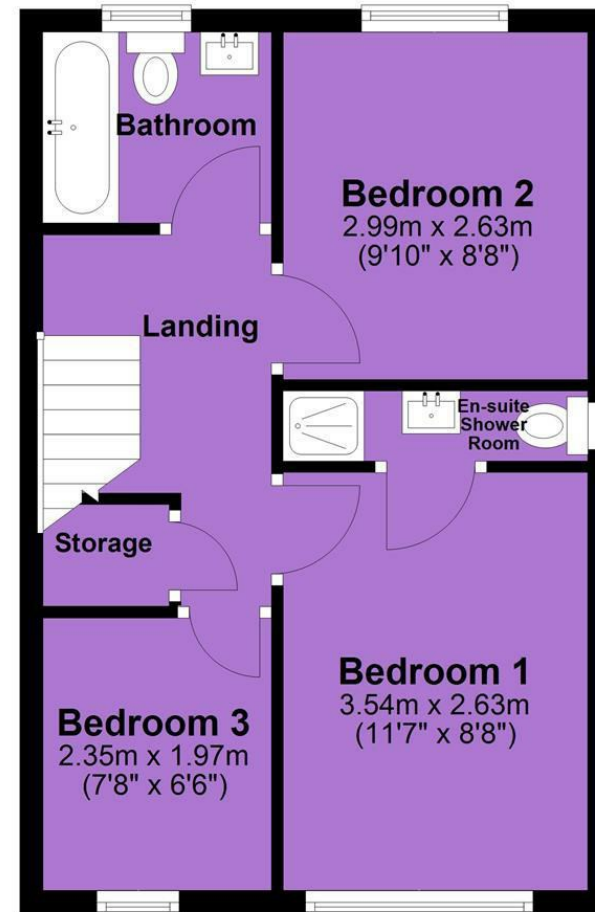


Tenure: **Freehold** Council Tax Band: **C**

Ground Floor



First Floor



JP & Brimelow Estate Agents Ltd
430 Barlow Moor Road, Manchester, M21 8AD
Tel: 0161 8822233
E: sales@jpbrimelow.co.uk www.jpandbrimelow.co.uk



JP & Brimelow
ESTATE AGENTS

NOTICE: JP & Brimelow Estate Agents Ltd for themselves and for the vendors or lessors of this property whose agents they give notice that:

- (i) the particulars are set out as a general outline only for the guidance of intending purchasers or lessees, and do not constitute, nor constitute part of, an offer or contract;
- (ii) all descriptions, dimensions, references to the condition and necessary permissions for use and occupation, and other details are given in good faith and are believed to be correct but any intending purchasers or tenants should not rely on them as statements or representations of fact but must satisfy themselves by inspection or otherwise as to the correctness of each of them;
- (iii) no person in the employment of JP & Brimelow Estate Agents Ltd has any authority to make or give any representation or warranty whatever in relation to this property.

jpandbrimelowstateagents

@jpandbrimelow