



Guide Price
£220,000

**Share of
Freehold**

1x  1x  1x 

**Bromley Common,
Bromley, Kent, BR2**

OVER 60?

Secure this property
for up to **59% less!**

cubitt & west
Helping you move forwards



Main features

- Period conversion flat with original features
- Well presented throughout
- Located in a desirable location
- Walking distance to Bromley South station and local amenities
- Flooded with natural light throughout the property

Accommodation

FIRST FLOOR

Hallway

Lounge: 14'6 x 11'7 (4.42m x 3.53m)

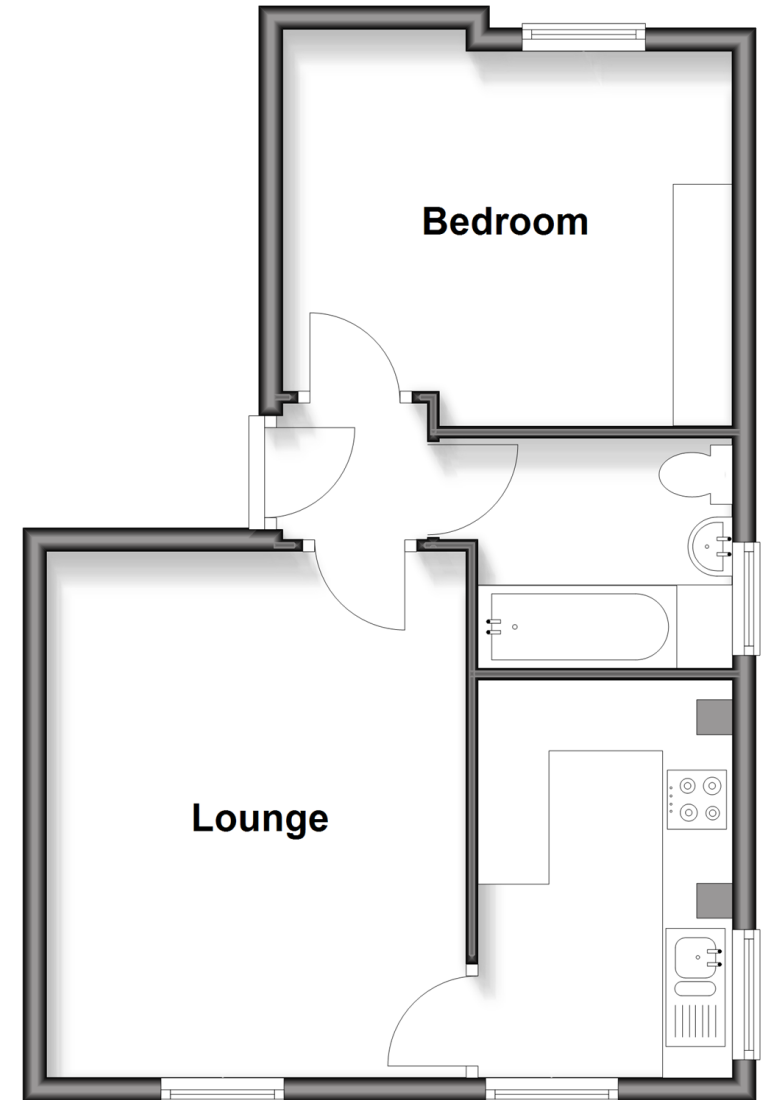
Kitchen: 10'10 x 7'1 (3.30m x 2.16m)

Bedroom : 12'2 x 10'5 (3.71m x 3.18m)

Bathroom

First Floor

Approx. 42.2 sq. metres (454.3 sq. feet)



Call Shirley - 020 8654 3037 ■ cubittandwest.co.uk

- Legal advice should be taken to verify fixtures/fittings, planning, alterations and/or lease details
- Appliances & services are untested, dimensions are approximate and floor plans are not to scale
- Through a Homewise Home For Life Plan people aged 60+ can secure this property for up to 50% less, by purchasing a Lifetime Lease.



21711796/20251016/PH/MS