



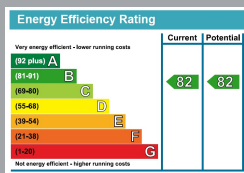
FLAT 16 SANDERLING  
BOSCOMBE SPA  
Dorset, BH5 1AB

£1,050 PCM

[goadsby.com](https://www.goadsby.com)

# SPACIOUS TWO DOUBLE BEDROOM APARTMENT CLOSE TO BEACHES

- Two Double Bedroom Apartment
- Gated Allocated Parking
- Boscombe Spa Location
- Close to Beaches
- EPC Rating: Band B



Reference: 946330

**Deposit Amount:** £1,211.00

**Council Tax:** Band C

**Furnishing:** Unfurnished

**Heating Type:** Gas

**Parking:** Yes

**Utilities:**

- Mains Supply Electricity
- Mains Supply Gas
- Mains Supply Water

**Drainage:** Mains Supply Drainage

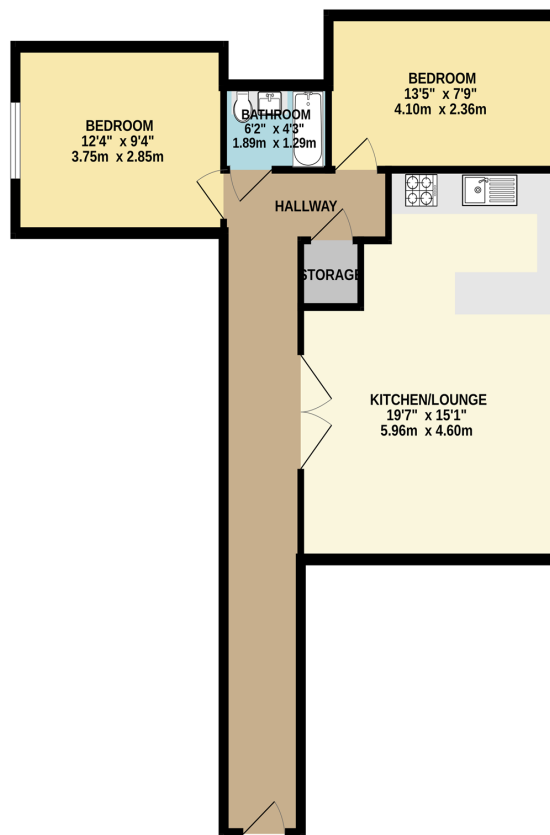
**Broadband:** Refer to Ofcom website  
[www.ofcom.org.uk/phones-and-broadband](http://www.ofcom.org.uk/phones-and-broadband)

**Mobile Signal:** Refer to Ofcom website  
[www.ofcom.org.uk/phones-and-broadband](http://www.ofcom.org.uk/phones-and-broadband)

**Flood Risk:** For more information refer to  
[gov.uk](http://gov.uk), check long term flood risk  
[www.gov.uk/check-long-term-flood-risk](http://www.gov.uk/check-long-term-flood-risk)

Two double bedroom apartment available to rent on Owls Road, Boscombe Spa. Features include an open plan kitchen and living area, gated parking with allocated space, a lift within the block and access to a secure bike store. Situated close to the beautiful beaches, this property combines coastal living with excellent amenities. On site visitor parking.

Photos taken prior to current tenancy in 2022



**PLEASE NOTE:**

Measurements quoted are approximate and for guidance only. Fixtures, fittings, services & appliances have not been tested and therefore no guarantee can be given that they are in working order. Images have been produced for information and it cannot be inferred that any item shown is included with the property. These particulars are believed to be correct but their accuracy is not guaranteed and they do not constitute an offer or form part of a contract. Solicitors are specifically requested to verify the sales particulars details in the pre-contract enquiries, in particular: price, local and other searches.

01202 432188  
 southbourne@goadsby.com

31 Southbourne Grove

Southbourne  
 Bournemouth, Dorset  
 BH6 3QT

Goadsby & Harding (Residential) Ltd  
 Registered Office: 99 Holdenhurst Road, Bournemouth, Dorset BH8 8DY Registered in England No. 1871280