



Hayling Road, Watford, WD19

Watford

£259,950

Bedrooms: 1

Bathrooms: 1

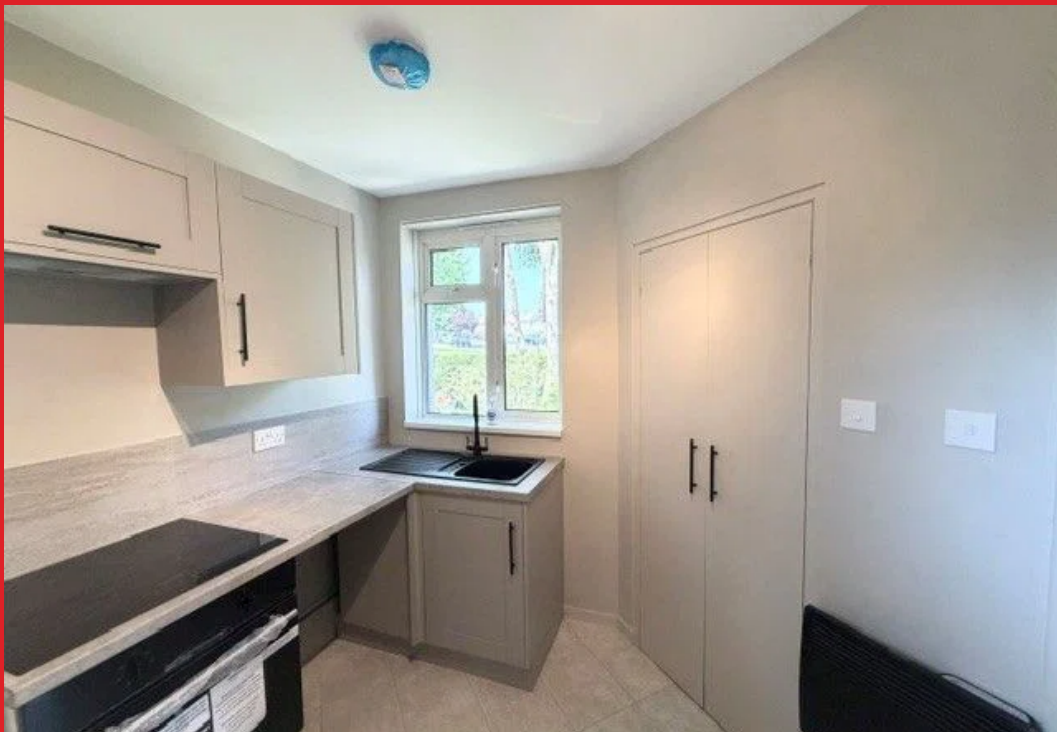
Receptions: 1

A beautifully presented newly refurbished STUDIO BUNGALOW situated on a sought after residential in the heart of South Oxhey/Watford, conveniently located and within walking distance to all local shopping/transport facilities. The property is being offered in excellent decorative order and benefits from: Replacement Double Glazed Windows, Gas Fired Heating To Radiators, Reception Room/Studio Room, Fully Fitted Modern Kitchen, Modern Shower Room, Separate WC, Court Yard Rear Garden & Front Garden.

IDEAL FTB / INVESTMENT

CHAIN FREE







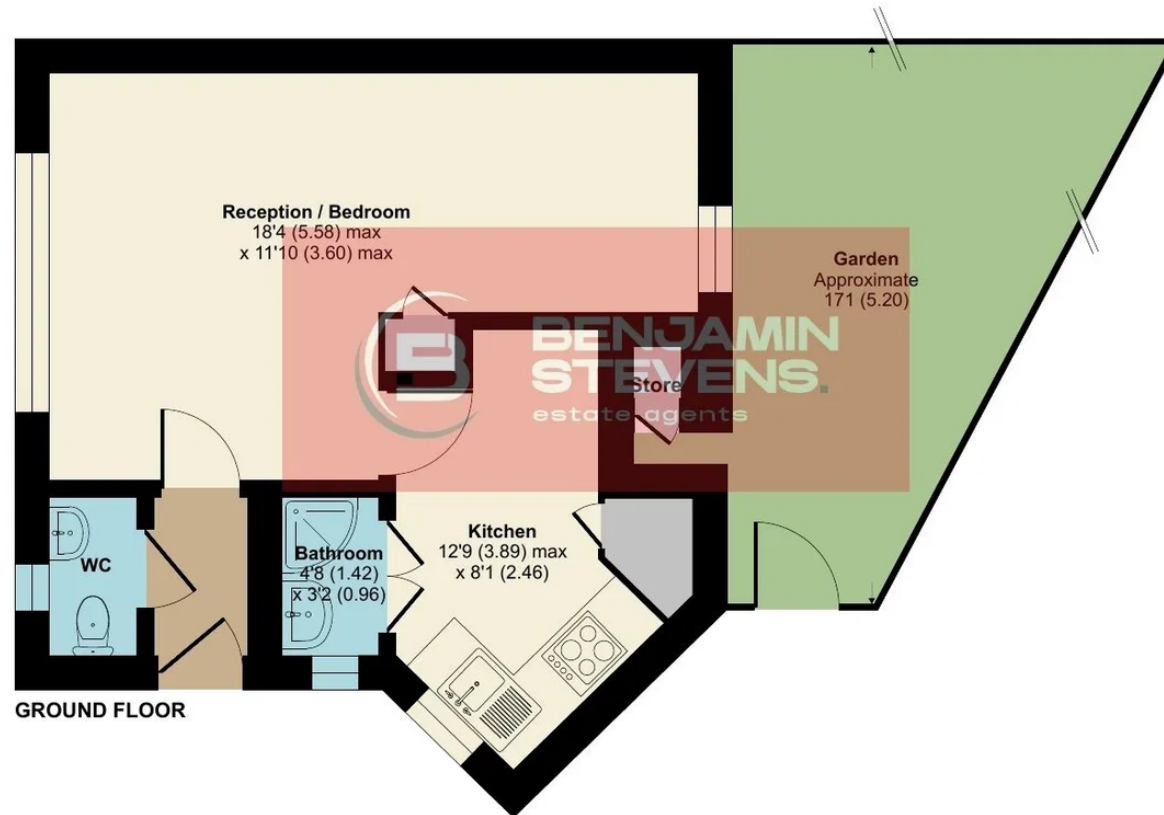
Hayling Road, Watford, WD19

Approximate Area = 311 sq ft / 28.8 sq m

Outbuilding = 2 sq ft / 0.1 sq m

Total = 313 sq ft / 28.9 sq m

For identification only - Not to scale



Floor plan produced in accordance with RICS Property Measurement 2nd Edition,
Incorporating International Property Measurement Standards (IPMS2 Residential). © n̄checom 2026.
Produced for Benjamin Stevens. REF: 1487849

