



12a Wilton Rise, York, YO24 4BW

Ground Floor One Bedroom Maisonette | Half a Mile From York City Centre | Walking Distance To York Train Station | Street Parking | Viewing Highly Recommended

- Ground Floor Maisonette
- Gas Central Heating
- Council Tax Band A
- One Bedroom
- Freehold
- Sought After Central Location
- Street Parking
- EPC D

£925 PCM

Jigsaw Letting are pleased to welcome to the market this delightful ground floor maisonette nestled in the charming area of Wilton Rise, York. With one generously sized bedroom and a well-appointed bathroom, this property is ideal for individuals or couples seeking a tranquil living space.

Upon entering, you are welcomed by a spacious lounge that provides an inviting atmosphere for relaxation and entertaining. The two reception rooms offer versatility, allowing you to create a dining area or a study, depending on your needs. The layout is designed to maximise space and light, making it a warm and welcoming home.

Location is key, and this property does not disappoint. Situated just half a mile from the historic city centre of York, you will have easy access to a wealth of shops, restaurants, and cultural attractions. Additionally, the maisonette is conveniently located near a pedestrian bridge that leads directly to York Train Station, making commuting and travel a breeze.

This charming maisonette in Wilton Rise presents an excellent opportunity for those looking to enjoy the vibrant lifestyle that York has to offer, all while residing in a comfortable and low-maintenance home. Don't miss the chance to make this lovely property your home.

COUNCIL TAX BAND

Please note that the council tax band for the property has either been advised by the owner or we have sought from online resources. Whilst we endeavour to ensure our details are accurate and reliable, we strongly advise to make further enquiries before continuing.

HOW DO I APPLY FOR A PROPERTY?

To avoid disappointment please contact the office to request an application form for the property you wish to apply for following your viewing.

LETTINGS FEES UPON APPLICATION

Additional fees apply for this property and are as follows; 1 weeks rent holding fee for each property. Please note, the holding fee is deductible from the first month's rent on the property if successful. There will also be a bond for the property equal to 5 weeks rent which will be held for the duration of the tenancy with the DPS. Go to, www.jigsawletting.co.uk or call for more details

LETTINGS VIEWINGS

Strictly by appointment with the sole agents by contacting 01757 241123. If there is any point of particular importance to, that we will be pleased to provide additional information or to make any further enquiries. We will also confirm that the property remains available. This is particularly important if you are travelling some distance to view the property. A full copy of the EPC for the property is available upon request.

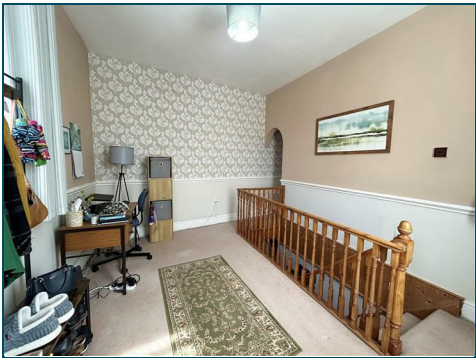
OPENING HOURS LETTING TEAM

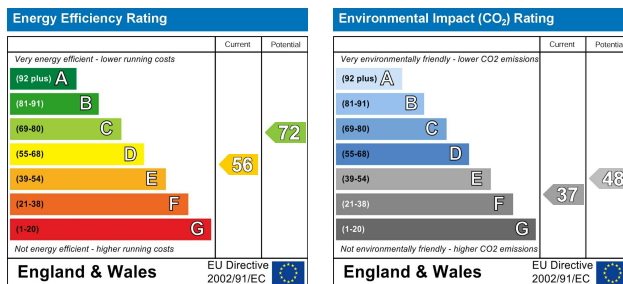
Monday – Friday 9.00am to 5.00pm Saturday – 9.00am – 1.00pm

TO LET PROPERTY DETAILS

Whilst we endeavour to make our property details are accurate and reliable, if there is any point which is of particular importance to you, please contact us and we will be pleased to check the information. Do so particularly if contemplating travelling some distance. These particulars are issued in good faith but do not constitute representations of fact or form part of any offer or contract.








11 Finkle Street, Selby, North Yorkshire, YO8 4DT
info@jigsawmove.co.uk | www.jigsawmove.co.uk | info@jigsawletting.co.uk | www.jigsawletting.co.uk
Jigsaw Move : 08975826 VAT: 215610542 | Jigsaw Letting : 07385709 VAT: 847215227



Look for Propertymark Protection to ensure your agent is qualified and regulated

aria propertymark PROTECTED

naea propertymark PROTECTED

