



Fern Bank Drive, Brooklands, M23

Offers Over: £260,000

Freehold

Fern Bank Drive, Baguley, M23

Situated on the popular Fern Bank Drive in Baguley, this well-presented two bedroom end mews property occupies a generous corner plot and offers spacious accommodation both inside and out. The home benefits from a large front garden with a pathway leading to the front entrance, creating an attractive first impression.

The property is entered via a handy, fully double glazed porch. A uPVC front door opens into the welcoming hallway, where stairs rise to the first floor. There is also a useful understairs storage cupboard with power, currently housing a tumble dryer.

To the left of the hallway is the bright and spacious living room, featuring a stylish media wall, an electric feature fireplace, and windows fitted with elegant plantation shutters. French doors open directly onto the rear garden, allowing plenty of natural light and providing excellent indoor outdoor living.

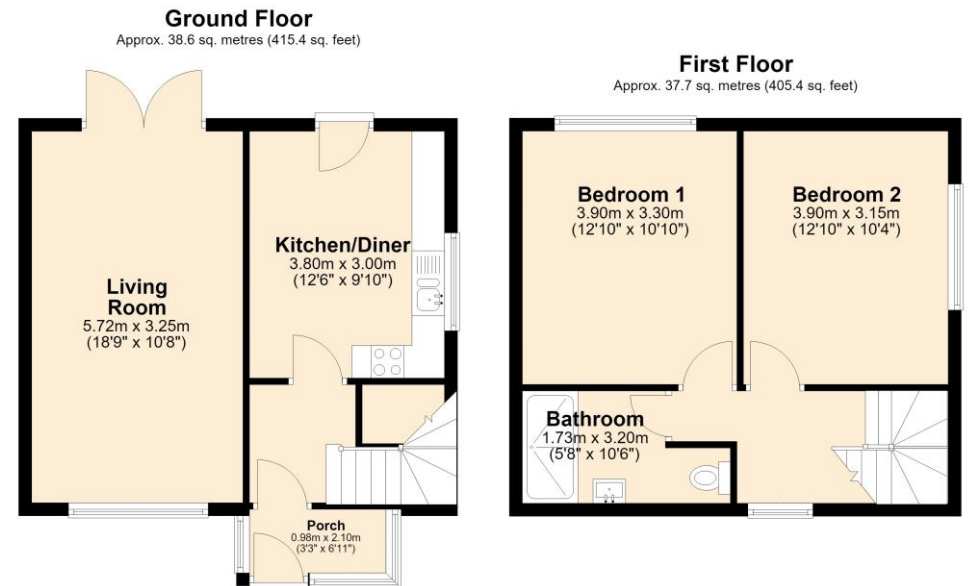
The generously sized kitchen offers ample worktop and cupboard space, windows overlooking the garden, and room for freestanding appliances. A door from the kitchen also provides access to the rear garden.

Upstairs, the landing benefits from a window with plantation shutters, creating a bright and airy feel. There are two well-proportioned double bedrooms, both with fitted wardrobes. The spacious principal bedroom features mirrored fitted wardrobes, while the second bedroom is also a comfortable double with fitted storage.

The modern bathroom is fitted with a large walk-in shower enclosure, WC, hand wash basin, and useful inset shelving.

Externally, the impressive rear garden can be accessed from both the kitchen and the living room. It offers a generous lawn, patio seating areas, a garden shed, and a selection of established plants and shrubs. The garden enjoys a good degree of privacy and is not overlooked, making it an ideal space for relaxing or entertaining.

- Freehold
- EPC Grade TBC
- Council Tax Band A



Total area: approx. 76.2 sq. metres (820.7 sq. feet)



The Property Man

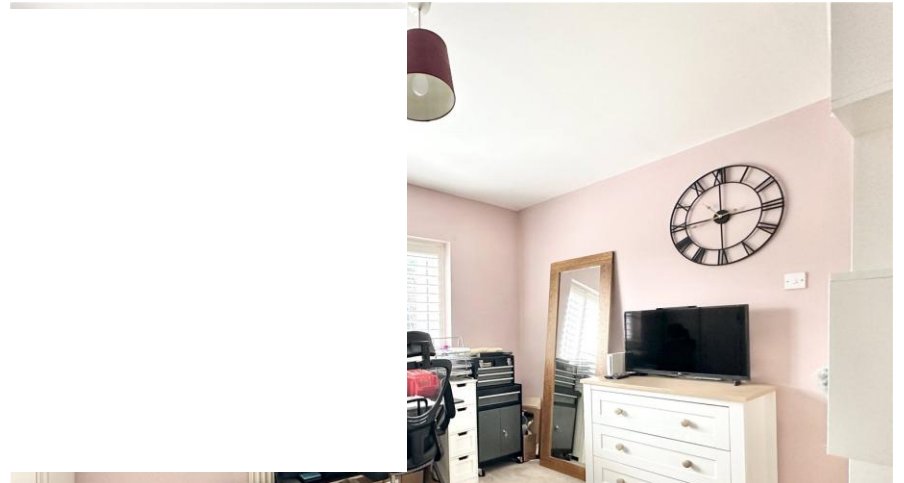
102A School Road
Sale
Cheshire
M33 7XB

T: 01615198855

E: sales@thepropertyman.co.uk

www.thepropertyman.co.uk

The Property Man
Registered Office Address: 7 St. Petersgate, Stockport, England, SK1 1EB Company Reg No: 09023087



Disclaimer

Every attempt has been made to ensure accuracy, however these property particulars are approximate and for illustrative purposes only. They have been prepared in good faith and they are not intended to constitute part of an offer of contract. We have not carried out a structural survey and the services, appliances and specific fittings have not been tested. All photographs, measurements, floor plans and distances referred to are given as a guide only and should not be relied upon for the purchase of any fixture or fittings. Lease details, service charges and ground rent (where applicable) are given as a guide only and should be checked prior to agreeing a sale.