

**\*\*BRAND NEW\*\***

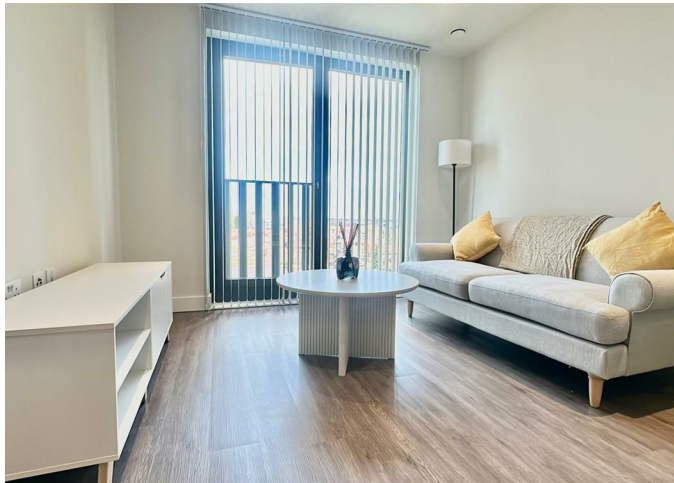


**516, ASHTED  
WHARF 1 PITT  
STREET,  
BIRMINGHAM, B4  
7FG**

**£1,050 PCM**

**FEATURES**

- CONCIERGE, GYM, CINEMA, GAMES ROOM & MORE
- LUXURY DEVELOPMENT BY BERKELEY GROUP
- 10 MINUTE WALK TO BULLRING / NEW STREET
- UNDERGROUND PARKING AVAILABLE FOR £50 PCM
- 2 JULIETTE BALCONIES
- FIFTH FLOOR WITH UNINTERRUPTED VIEWS



# 1 Bedroom Apartment located in Birmingham

Call us on  
**0121 667 0343**

[hello@swift-property.co.uk](mailto:hello@swift-property.co.uk)  
[www.swift-property.co.uk](http://www.swift-property.co.uk)

**Council Tax Band**  
**B**

**\*\*EXCEPTIONAL RESIDENTS FACILITIES - SEE PHOTOS\*\***

Welcome to this exquisite brand new apartment in the highly sought-after Creative Quarter of Birmingham, Belmont Row, B4. Be the very first to move in and enjoy a beautifully finished home with full interior design exactly as shown in the photos – stylish, modern, and ready to live in.

Spanning approximately 480 sq ft, this thoughtfully designed residence offers a bright and spacious reception area, a comfortable double bedroom, and a sleek contemporary bathroom. The elegant Juliette balconies provide picturesque, uninterrupted views while allowing natural light to flood the living space, creating a wa

As part of a stunning new c  
a concierge service for ad  
dedicated co-working spac

Set within a vibrant canals  
living and peaceful waters  
Birmingham's shops, resta  
doorstep.

Available now, this is a rare  
apartment in one of Birmin  
stunning property at Glass



site amenities including  
for an active lifestyle,  
d students alike.

between dynamic city  
easy access to  
is right on your

and interior-designed  
chance to make this

Energy Efficiency Rating	
	Potential
Very energy efficient - lower running costs	
(92 plus) <b>A</b>	
(81-91) <b>B</b>	<b>84</b>
(69-80) <b>C</b>	
(55-68) <b>D</b>	
(39-54) <b>E</b>	
(21-38) <b>F</b>	
(1-20) <b>G</b>	
Not energy efficient - higher running costs	
England & Wales	EU Directive 2002/91/EC

Agents Note: Whilst every care has been taken to prepare these particulars, they are for guidance purposes only. All measurements are approximate and are for general guidance purposes only and whilst every care has been taken to ensure their accuracy, they should not be relied upon and potential buyers are advised to recheck the measurements.

