



BURROWS ROAD, NW10

£525,000

Two Double Bedrooms
First Floor Flat
South Facing Reception
Potential To Extend
Chain-Free
Close To Transport Links

@marshandparsons
marshandparsons.co.uk

MARSH &
PARSONS



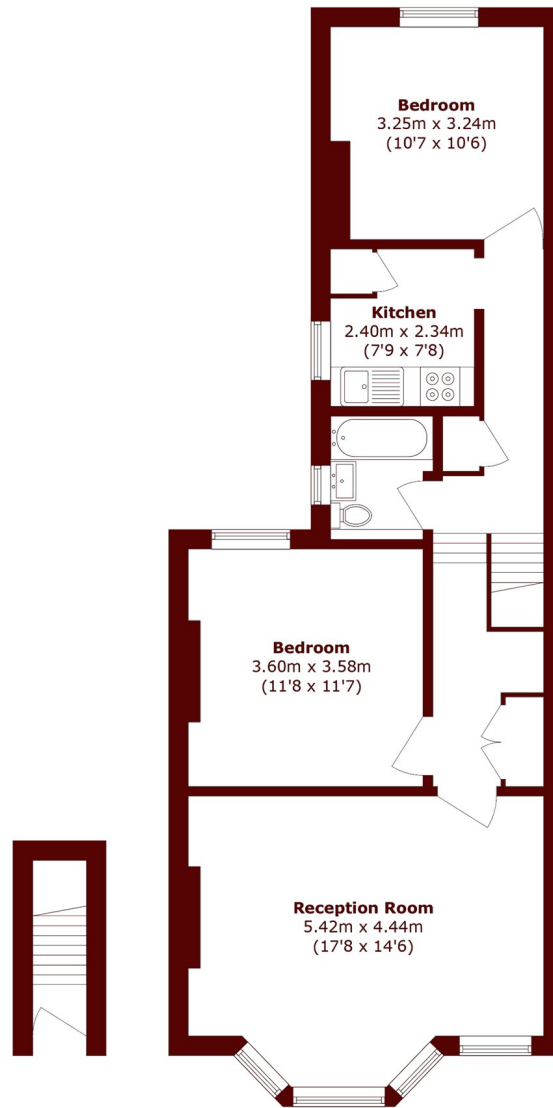
ABOUT THE PROPERTY

Set within an end of terrace Victorian conversion is this spacious two double bedroom on the first floor, with a south facing reception room, high ceilings, and flooded with natural light throughout. The property has a separate kitchen, built-in storage, and is available chain-free.

Burrows Road is a residential street in Kensal Rise in close proximity to the shops, cafes, restaurants and bars Chamberlayne Road, and near to the green open spaces of Queen's Park. Transport links include Kensal Green (Bakerloo & Overground) and Kensal Rise (Overground).



STEP INSIDE BURROWS ROAD



Ground Floor

First Floor

Total area (approx.): 70.0 sq. m (753.5 sq. ft)

Queen's Park
020 7624 4513

Energy Rating: D We aim to make our particulars both accurate and reliable. However, they are not guaranteed; nor do they form part of an offer or contract. If you require clarification on any points then please contact us, especially if you're traveling some distance to view. Please note that appliances and heating systems have not been tested and therefore no warranties can be given as to their good working order

**MARSH &
PARSONS**