



11 Andrena Apartments 1 Potters Road, Chelsea, London, SW6 2WQ

£3,495 Per month



11 Andrena Apartments 1 Potters Road, Chelsea, London, SW6 2WQ

£3,495 Per month

New to the market, this stunning second floor spacious two bedroom executive apartment is located in the Andrena Apartments, part of the sought after newly built Chelsea Botanica development.

This impressive property benefits from a long entrance hallway with a large storage cupboard and a utility cupboard leading to a large open plan living area with wooden flooring, small storage cupboard and access to a long private balcony, stylish fully integrated kitchen, two large double bedrooms, two luxury bathrooms, neutral decoration throughout, underfloor heating throughout and secure video entry.

Residents have access on an on site concierge service, internal courtyard garden and Peloton and weights room.

Chelsea Botanica is located next to the Harbour Club and Imperial Park, just a short walk from Imperial Wharf Station, Chelsea Harbour Pier and the Kings Road.

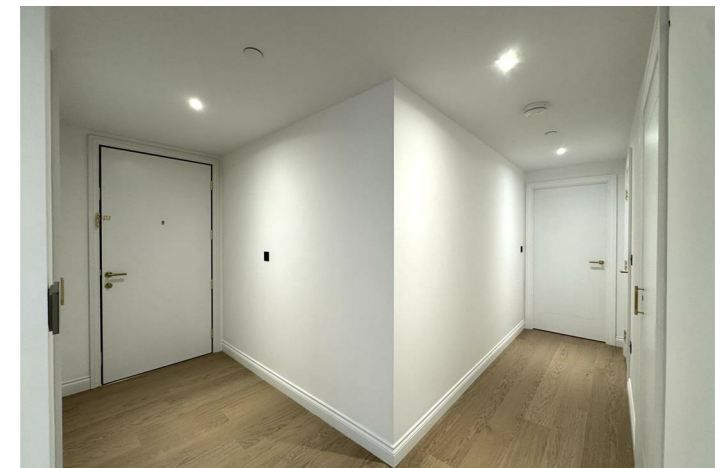
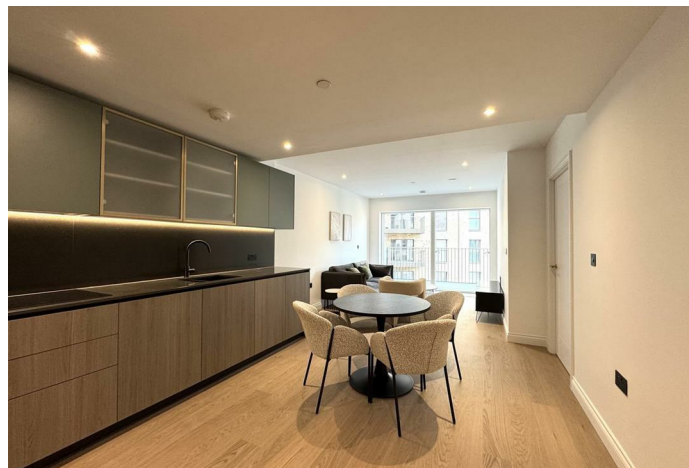
* Sorry no allocated parking *

* Brand new furniture pack and curtains to be fitted shortly *

Description



Situation



Furnished

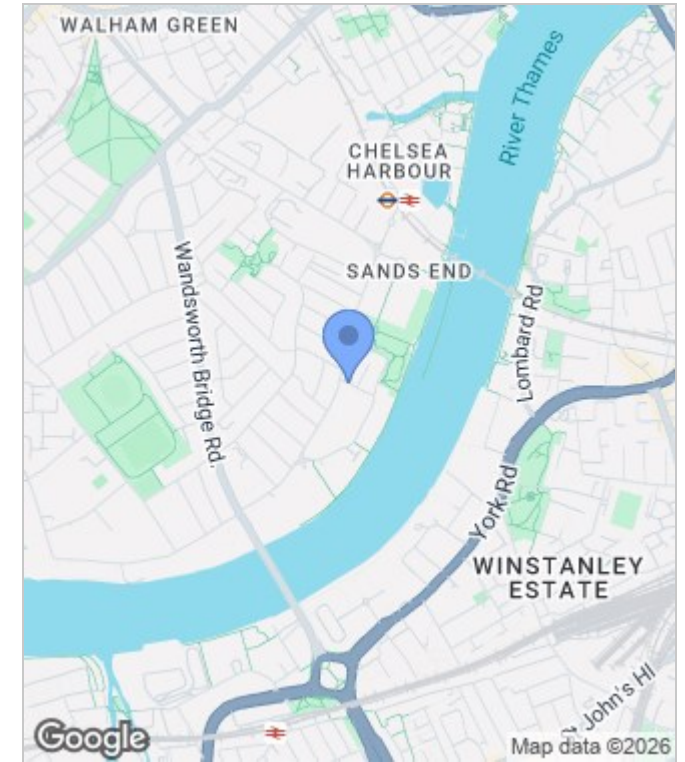
Council Tax Band: New Build

Available: 30th March 2026

Floor Plans



Area Map



Energy Performance Graph

Energy Efficiency Rating		Current	Potential
Very energy efficient - lower running costs			
(92 plus) A			
(81-91) B		86	86
(69-80) C			
(55-68) D			
(39-54) E			
(21-38) F			
(1-20) G			
Not energy efficient - higher running costs			
England & Wales		EU Directive 2002/91/EC	

These particulars, whilst believed to be accurate are set out as a general outline only for guidance and do not constitute any part of an offer or contract. Intending purchasers should not rely on them as statements of representation of fact, but must satisfy themselves by inspection or otherwise as to their accuracy. No person in this firm's employment has the authority to make or give any representation or warranty in respect of the property.