




5 Bowling Green Croft
York, YO31 8FY
£1,100 Per Month

 2  1  1  D

****Lovely Two Bedroom Terrace****

This two bedroom terrace house in a popular location just off Haxby Road is within walking distance of the City Centre, Nestle and the Hospital.

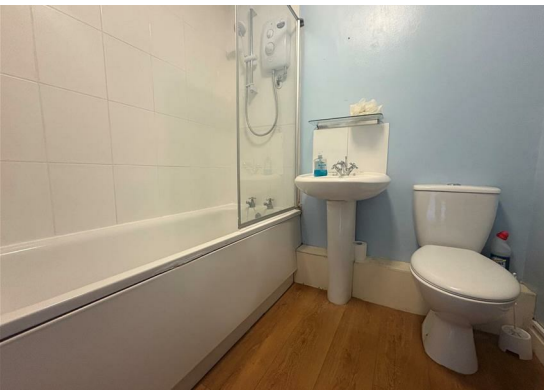
The property comprises of Entrance Vestibule which leads on to an open plan lounge space. The property boasts a modern kitchen complete with fridge freezer. As you proceed up the stairs you will find two double bedrooms and a three piece bathroom suite. There is also a garden to the rear of the property.

To be let on a unfurnished basis.

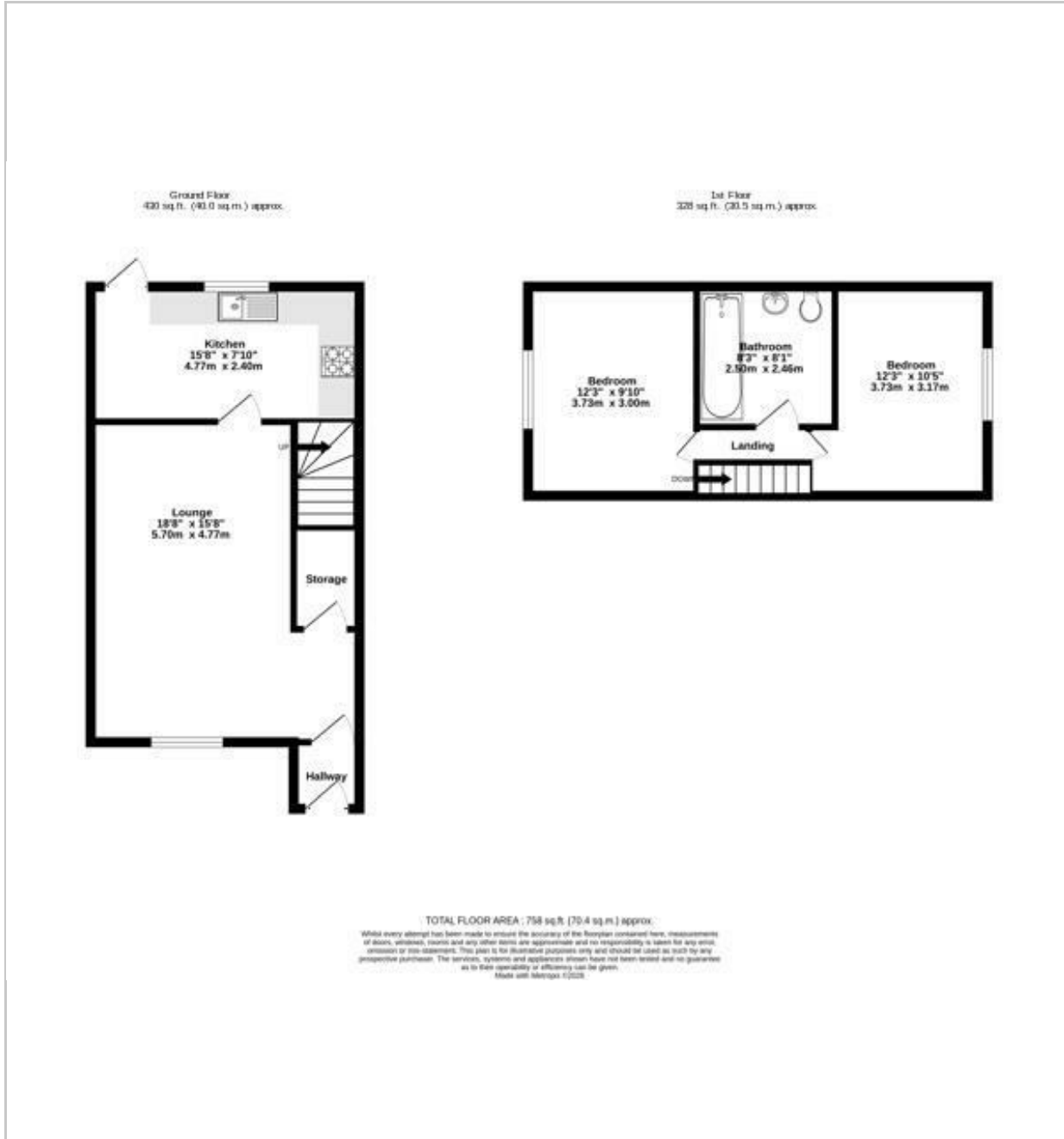
Council Tax Band B

EPC Rating - To be confirmed

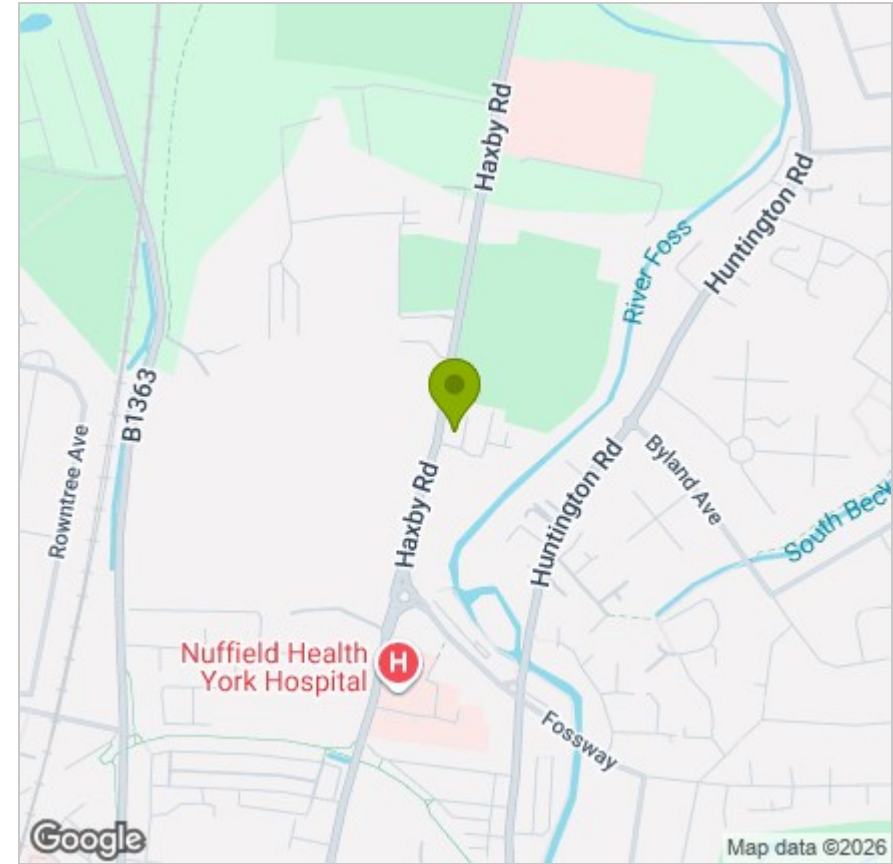
Available Now



FLOOR PLAN



LOCATION



EPC

Energy Efficiency Rating		Current	Potential
Very energy efficient - lower running costs			
(92 plus) A			
(81-91) B			87
(69-80) C			
(55-68) D		64	
(39-54) E			
(21-38) F			
(1-20) G			
Not energy efficient - higher running costs			
England & Wales	EU Directive 2002/91/EC		

These particulars, whilst believed to be accurate are set out as a general outline only for guidance and do not constitute any part of an offer or contract. Intending purchasers should not rely on them as statements of representation of fact, but must satisfy themselves by inspection or otherwise as to their accuracy. No person in this firm's employment has the authority to make or give any representation or warranty in respect of the property.