



Westwell Road, SW16

£390,000

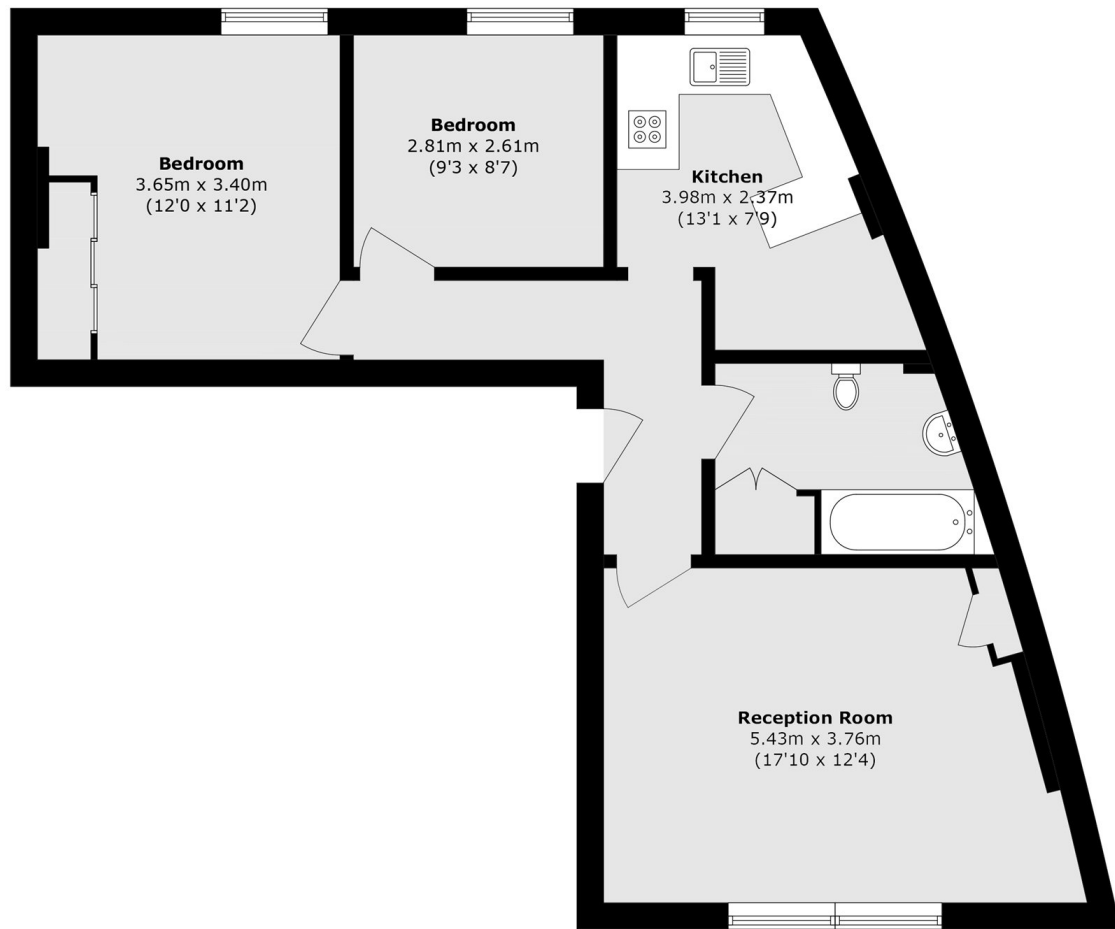
OFFERS OVER A bright and spacious Victorian conversion, offered with a share of the freehold. The property features two double bedrooms, a modern kitchen and bathroom, as well as a generous separate reception room with high ceilings. There is also the added bonus of a communal garden.

Westwell Road is conveniently located close to both Streatham and Streatham Common stations, providing fast links into the City. It also benefits from easy access to the wide range of amenities along Streatham High Road, as well as the open green spaces of Streatham Common.

Features

- Share of Freehold
- Victorian Conversion
- Two Double Bedrooms
- Communal Garden
- Modern Kitchen
- Close to Transport

Westwell Road, London, SW16



Total area (approx.): 62.1 sq. m (668.4 sq. ft)