



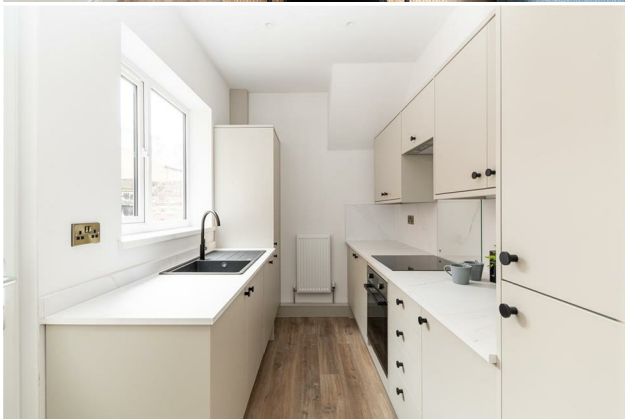
HIVE ESTATES



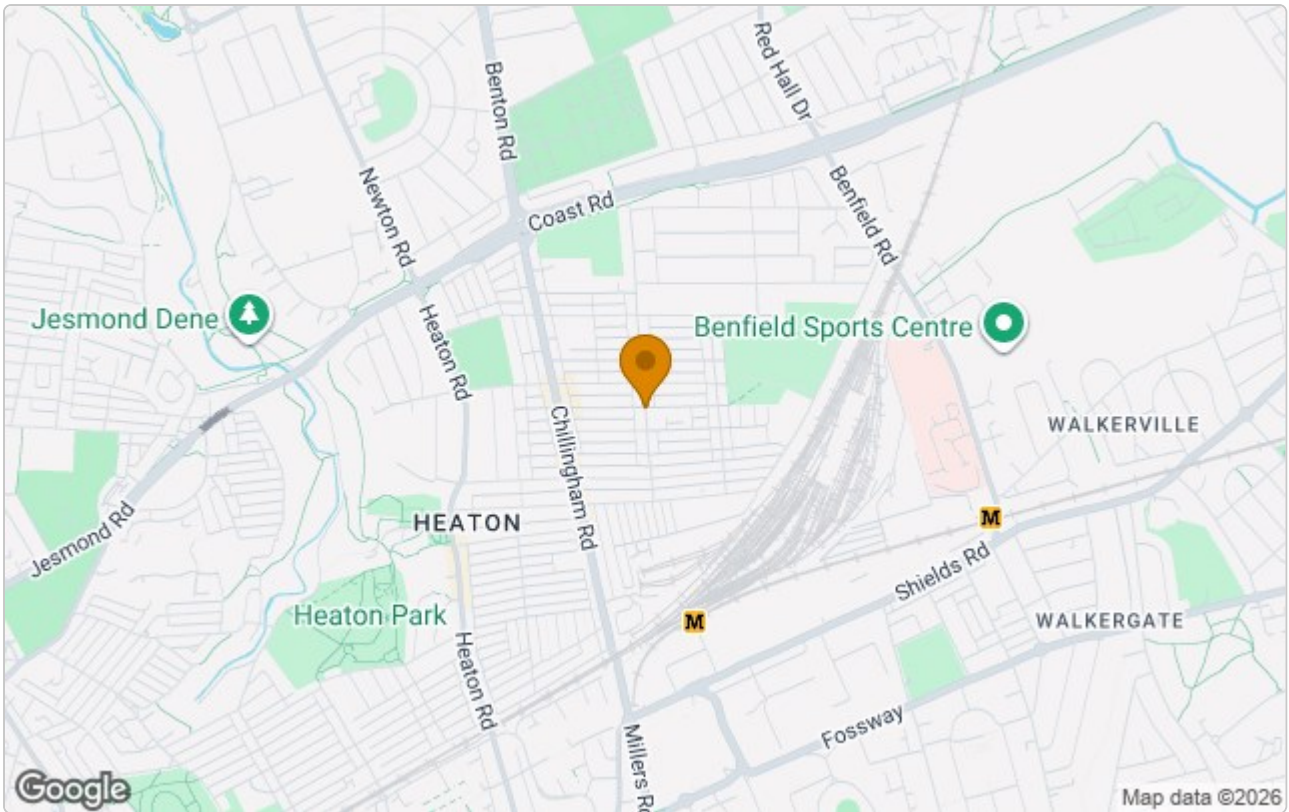
30 Addycombe Terrace, Newcastle Upon Tyne, NE6 5DQ

£1,200 Per Month

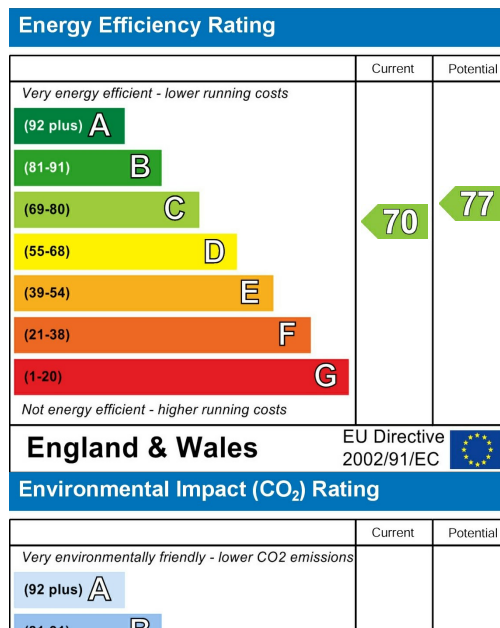
Available Now | £1,200 per month | Hive Estates presents to the market a refurbished flat in the sought after area of Heaton. The property is perfectly situated on Addycombe Terrace between the local shops, restaurants and cafes that Heaton has to offer its residents. Iris Brickfield Park is also a short distance from the property. Inside the full property has undergone a refurbishment and has been designed by an interior designer to provide a quality home. There are two double bedrooms, the master has a beautiful bay window allowing in an array of light. The second bedroom is found to the rear of the property over looking to yard. There is a stylish lounge area which has space for dining, making it the ideal room for entertaining. The kitchen is modern and comes fully integrated with dishwasher, washer/dryer, electric oven and hob plus fridge/freezer. The bathroom has a double walk in shower with black fittings and is beautifully tiled. Externally there is free on street parking.



Area Map



Energy Efficiency Graph



These particulars, whilst believed to be accurate are set out as a general outline only for guidance and do not constitute any part of an offer or contract. Intending purchasers should not rely on them as statements of representation of fact, but must satisfy themselves by inspection or otherwise as to their accuracy. No person in this firm's employment has the authority to make or give any representation or warranty in respect of the property.