

LEASEHOLD



Apartment

166 SMEATON COURT, HERTFORD, SG13 7AU

Guide Price

£315,000

FEATURES

- Chain Free
- Secure Underground Allocated Parking
- Two Bedroom Second Floor Apartment
- Private Balcony With Direct River Views
- Gas Central Heating
- Lift Access
- Modern Family Bathroom
- Close To Hertford East BR, Town Centre & Hartham Common



Smeaton Court Hertford SG13 7AU

Ideally located within easy walking distance of Hertford East BR, Hertford Town Centre and Hartham Common.

The accommodation comprises an open plan lounge/kitchen/dining area, two well-proportioned bedrooms and a modern family bathroom.

Further benefits include lift access, secure under allocated parking, gas central heating and a long lease.

Contact Mount & Co. to arrange your viewing.



MOUNT & CO | 2 MARKET PLACE, HERTFORD, HERTFORDSHIRE, SG14 1DF



MOUNT & CO | 2 MARKET PLACE, HERTFORD, HERTFORDSHIRE, SG14 1DF

Call us on

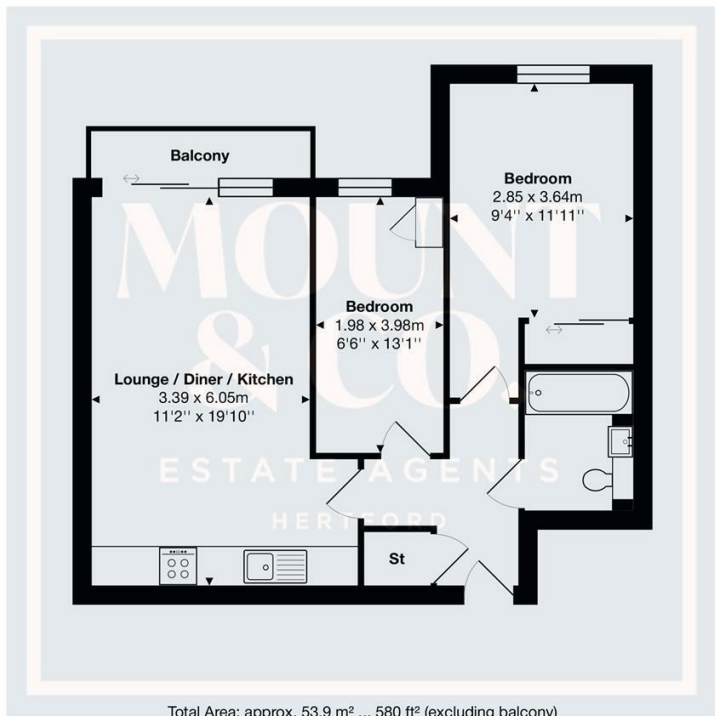
01992 937 011

hello@mountandco.co.uk

https://www.mountandco.co.uk/

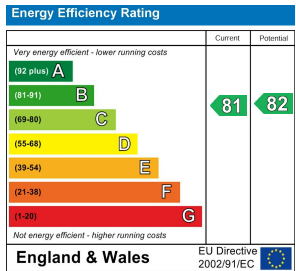
Council Tax Band

D



THE FLOORPLAN IS FOR ILLUSTRATIVE PURPOSES ONLY AND IS NOT TO SCALE.
Measurements and features are approximate and may differ from the actual property. Verify all details independently; no liability is accepted for errors or omissions.

Property marketing provided by www.fotomarketing.co.uk



Agents Note: Whilst every care has been taken to prepare these particulars, they are for guidance purposes only. All measurements are approximate and are for general guidance purposes only and whilst every care has been taken to ensure their accuracy, they should not be relied upon and potential buyers are advised to recheck the measurements.