



26 Ennerdale Drive, South Wootton

King's Lynn PE30 3NZ

£575,000

Bedrooms: 5 | **Bathrooms:** 2 | **Receptions:** 3

Nestled in the highly desirable village of South Wootton, this exceptional detached chalet bungalow is the epitome of stylish, modern living. Immaculately presented and thoughtfully designed, this four/five-bedroom home offers generous, versatile accommodation that's ready to enjoy from the moment you step through the door.

From the very first impression, this home sets the tone. A sweeping driveway provides ample off-road parking for family and guests alike, offering both convenience and adding to the homes kerb appeal.

Step inside and you'll instantly feel the light, space, and warmth that flows throughout. The layout has been cleverly crafted for today's lifestyle, sociable, practical, and beautifully finished. At the heart of the home is a breathtaking 21ft kitchen/dining room, sleek, stylish, and made for entertaining. Whether it's laid-back family breakfasts, dinner parties with friends, or catching up on homework over a snack, this space effortlessly adapts to your day.

To the rear, a fabulous 27ft living room opens directly onto the south-facing garden. Flooded with natural light, it's the perfect space to unwind after a long day. For those who love to host or simply enjoy a night in, the dedicated games/family room with feature roof lantern adds another layer of lifestyle flexibility, think movie nights, pool tournaments, or darts competitions long after the sun has set.

The ground floor continues to impress with three generous double bedrooms, including one with its own walk-in wardrobe, which, subject to planning, could be transformed into a luxurious en-suite. The current owners have cleverly styled the third bedroom as a productive home office. You'll also find a modern family bathroom, a dedicated utility room, and even a fully equipped home gym to keep fitness goals within easy reach.

Head upstairs and the wow factor continues. Two more double bedrooms await, including a sensational principal suite stretching to over 19ft in length, complete with fitted wardrobes and a private en-suite, your very own sanctuary to relax, recharge and retreat.

Outside, the garden is a true haven. Facing south and enjoying fantastic privacy, it's a space designed for living. Host BBQs, dine al-fresco, or simply soak up the sun with a book in hand. There's a beautifully maintained lawn for play, a dedicated fruit and vegetable patch for green-fingered enthusiasts, and a handy low-maintenance area with space for a garden shed or workshop.

Whether you're upsizing, seeking multigenerational living, or simply dreaming of a home that combines space, style and flexibility, this one delivers. A standout property with so much to offer, it's time to turn the key and start your next chapter. Don't miss it!

Tenure: Freehold

Property Type: Detached Bungalow

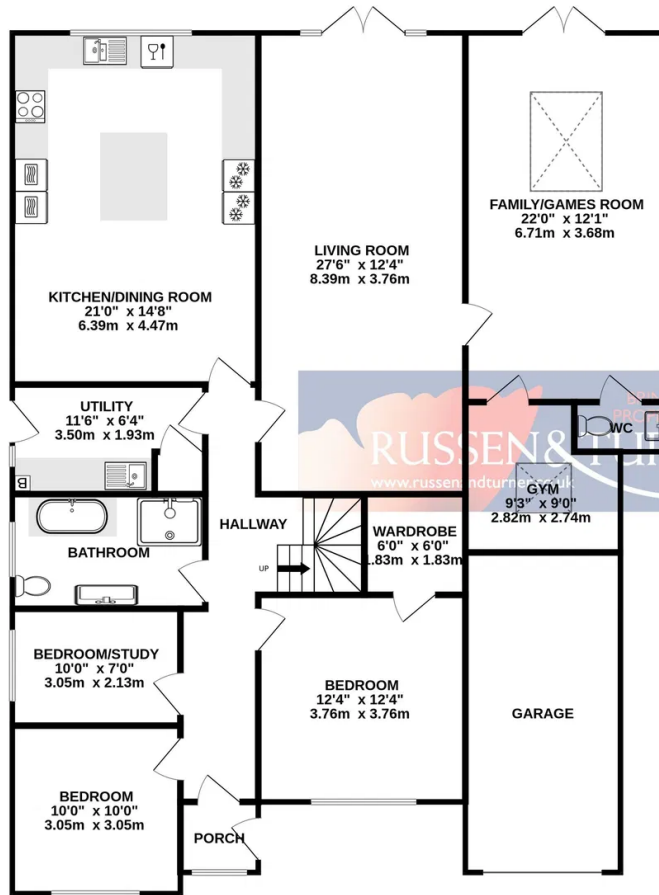
- Detached Chalet Bungalow
- Four/Five Double Bedrooms
- Wonderfully Presented
- Superb Modern Family Home
- Sought After Location
- Ample Off-road Parking and Single Garage
- Stunning Games/Family Room
- Home Gym/Study
- Wealth of Versatile Accommodation
- Private South Facing Rear Garden

Disclaimer

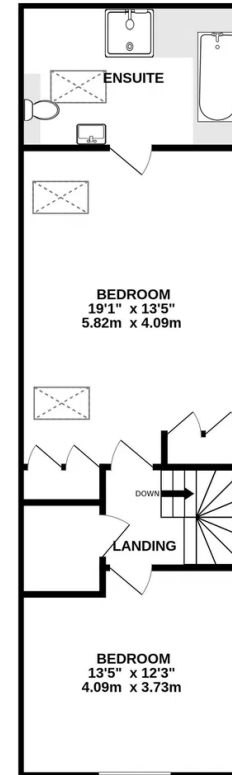
1. To meet money-laundering regulations, all buyers will need to complete an ID check. We'll ask you to provide the necessary documents, and there's a small fee of £20.50 per client for this service.
2. We do our best to make sure our property details are fair, accurate, and up to date, but they're meant as a general guide only. If there's anything particularly important to you, please get in touch – we'll be happy to look into it further.
3. All measurements are provided as a guide and may not be exact.
4. We haven't tested any of the property's services, equipment, or appliances. We recommend that buyers arrange their own survey or service checks before making a final offer.
5. These details are provided in good faith, but they don't form part of any offer or contract. Buyers should verify any points that are important to them before proceeding.



GROUND FLOOR
1847 sq.ft. (171.6 sq.m.) approx.



1ST FLOOR
615 sq.ft. (57.1 sq.m.) approx.



TOTAL FLOOR AREA : 2462 sq.ft. (228.7 sq.m.) approx.

Whilst every attempt has been made to ensure the accuracy of the floorplan contained here, measurements of doors, windows, rooms and any other items are approximate and no responsibility is taken for any error, omission or mis-statement. This plan is for illustrative purposes only and should be used as such by any prospective purchaser. The services, systems and appliances shown have not been tested and no guarantee as to their operability or efficiency can be given.
Made with Metropix 62025