

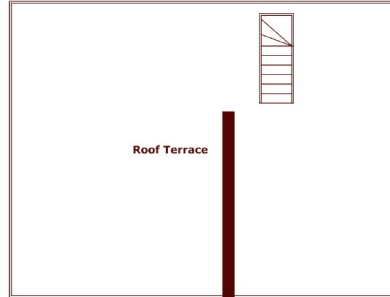


Westbourne Grove, W11

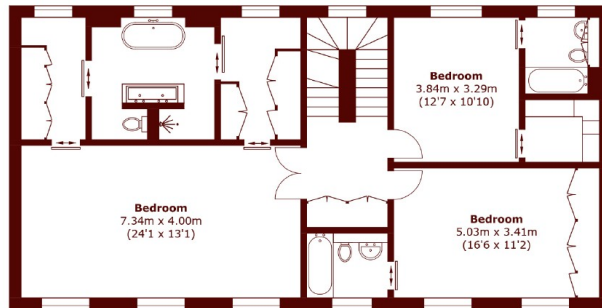
£4,153 per week (£17,996 pcm)

 3  3  1  D

- 50ft South Facing Terrace
- Full of Natural Light
- Three En-Suite Bathrooms
- Wooden Floors
- Three Double Bedrooms
- Prestigious Location



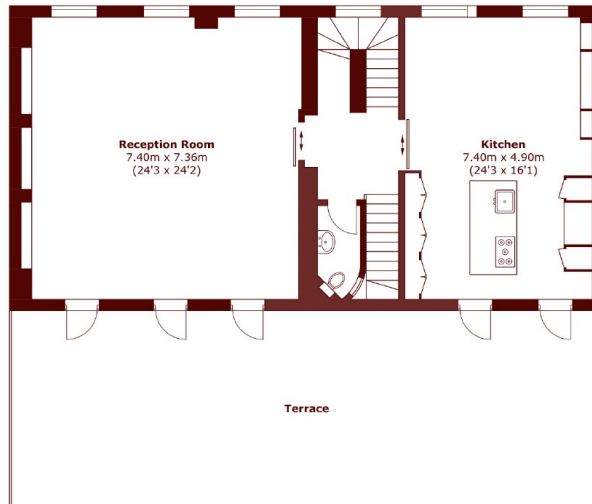
Roof Terrace



Second Floor



Ground Floor



First Floor

Total area (approx.): 229.9 sq. m (2,474.7 sq. ft)
Roof Terrace: 156.9 sq. m (1,689 sq. ft)

Marsh & Parsons Notting Hill

2-6 Kensington Park Road,
London, W11 3BU
020 7313 2890