



54324532 Duxford Tower, East Drive, Colindale, NW9 5QF
£2,500



54324532 Duxford Tower, East Drive, Colindale, NW9 5QF

£2,500

New Apartment | Gated Parking | Residents Gym | Swim & Spa Access | Landscaped Garden | Co-Working Lounge | Free Travel Card Included.

Conveniently located just a short walk from Colindale Station, this apartment is available furnished or unfurnished and ready to move in anytime from November through to February.

Experience modern living with access to a range of exclusive resident facilities designed for comfort, convenience, and community. Enjoy a residents-only gym, communal workspaces, and a coffee shop just steps from your door. The development also offers a secure parcel room, on-site management team, and gated parking for peace of mind.

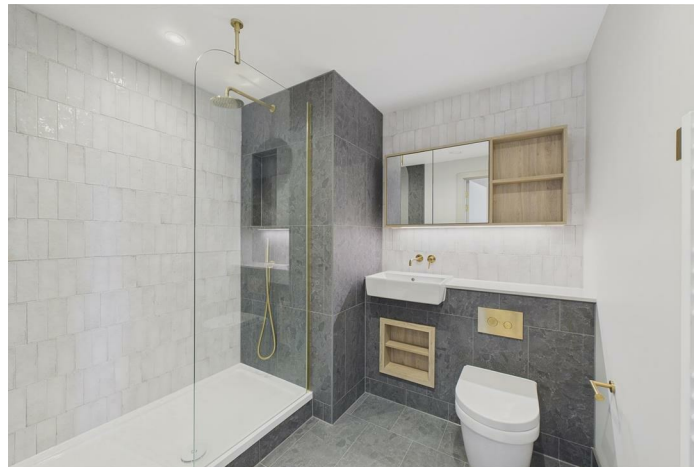
Unwind on the roof terrace with BBQ areas, or take advantage of access to a private swimming pool - all designed to elevate your everyday living.

Ideal for professionals and families seeking contemporary living with excellent connectivity and lifestyle perks.

Description



Situation



Furnished/unfurnished

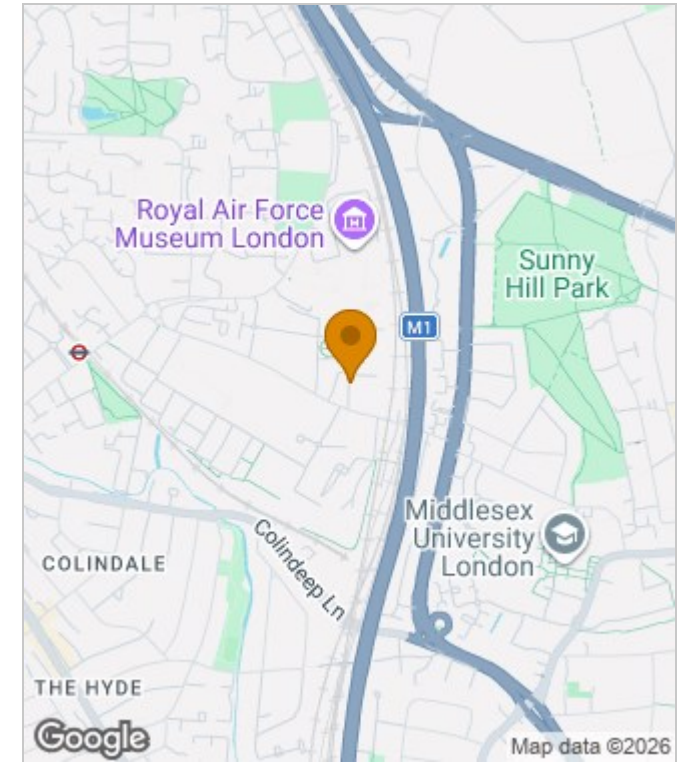
Council Tax Band: B

Available:

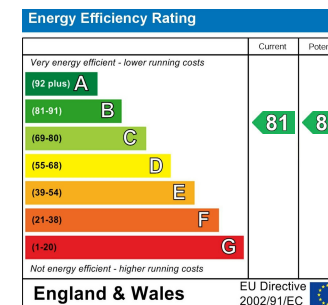
Floor Plans



Area Map



Energy Performance Graph



The Draper - Colindale

Details		Building amenities		Approx. total area
Property Type	Apartment	In-House Gym	Parcel collection	82.21 m ²
Bedrooms	x2	Central communal garden	Free high-speed Wi-Fi	885 ft ²
Bathrooms	x2	Large co-working spaces	Access to swim and spa	

Measurements are approximate and not to scale in this floor plan. Provided for illustrative purposes.



These particulars, whilst believed to be accurate are set out as a general outline only for guidance and do not constitute any part of an offer or contract. Intending purchasers should not rely on them as statements of representation of fact, but must satisfy themselves by inspection or otherwise as to their accuracy. No person in this firm's employment has the authority to make or give any representation or warranty in respect of the property.