



227 Sycamore, Hoburne Bashley

£59,999

Mitchells
1963 — TODAY



227 Sycamore
Hoburne Bashley Holiday Park
New Milton
Hampshire
BH25 5QR

This fantastic Swift Chamonix holiday home is ideally situated just a short level walk of the main clubhouse and facilities and benefits from a bright south facing decking. The property offers bright and modern accommodation with features including a luxury kitchen and bathroom, a generous private decking, a master bedroom with an en-suite and dressing room and nearby parking.

- 2017 Swift Charmonix 43x13
- 2026 Site Fees: £8,553
- 2026 Rates: £674.93
- License Ends: 30/11/2037
- Second Home Only, Cannot Be Main Residence
- Open Plan Kitchen/Living Area
- Two Bedrooms
- Family Bathroom
- En-Suite Shower Room
- Spacious Area Of Decking



The Property

A double glazed main door leads through to the kitchen/dining room which is fitted with a fantastic range of high specification wall and base units with a contrasting stone effect worktop, integrated appliances include a five burner gas hob with extractor fan over and stainless steel splashback, undercounter double oven, wine fridge, dishwasher, microwave, stainless steel one and a half bowl sink with mixer tap over and drainer, tall stand up fridge freezer and a cupboard housing the wall mounted gas fired boiler.

The dining area consists of floor to ceiling windows, three Velux windows with built in blinds and a four seater table and chairs.

This opens through to the sitting room with a bright triple aspect, L-shaped sofa with pull out sofa bed, two separate armchairs, sliding patio doors onto the decking, wall mounted TV point, electric fire and built in surround sound.

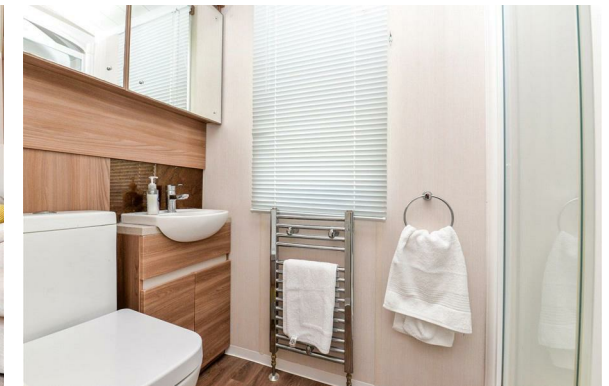
The hallway has useful coat hooks and gives access to the main shower room and bedrooms.

Main shower room with modern suite comprising a WC, wash hand basin with mixer tap over and storage beneath, walk in double shower with thermostatic shower attachments, two mirror fronted medicine cabinets and a chrome heated towel rail.

Bedroom two is a lovely twin bedroom with two single beds, built in wardrobes and TV aerial point.

The master bedroom is a particular feature of this property situated to the rear with a king sized bed with built in bedside cabinets, lots of built in furniture, walk in wardrobe and its own luxury en-suite.

The en-suite comprises of a WC with hidden cistern, wash hand basin with mixer tap over and storage beneath, walk in double shower with thermostatic shower attachments and sliding glass shower doors and a double mirror fronted medicine cabinet.





Gardens & Grounds

To the front of the property is a large area of private decking surrounded by a glass balustrade and has a bright sunny southerly aspect making a fantastic area for outside entertaining.



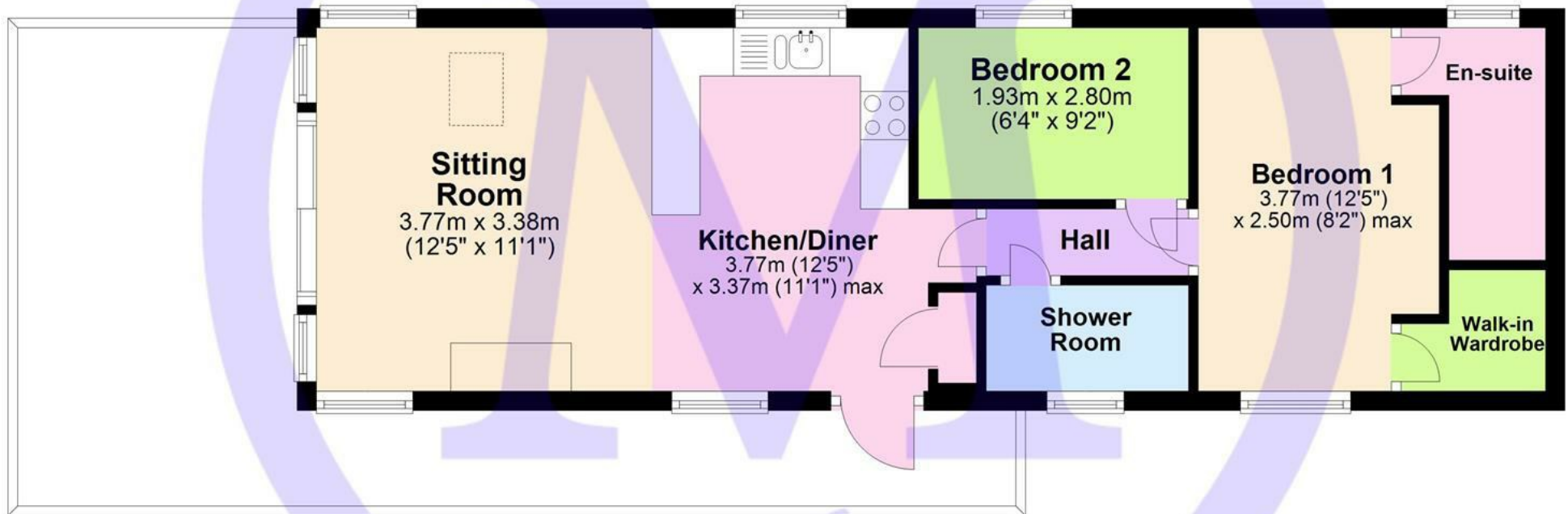
Site Fees & Charges

2026 Site Fees: £8,553
2026 Rates: £674.93
License Ends: 30/11/2037

EST.

Floor Plan

Approx. 48.1 sq. metres (517.7 sq. feet)



1963

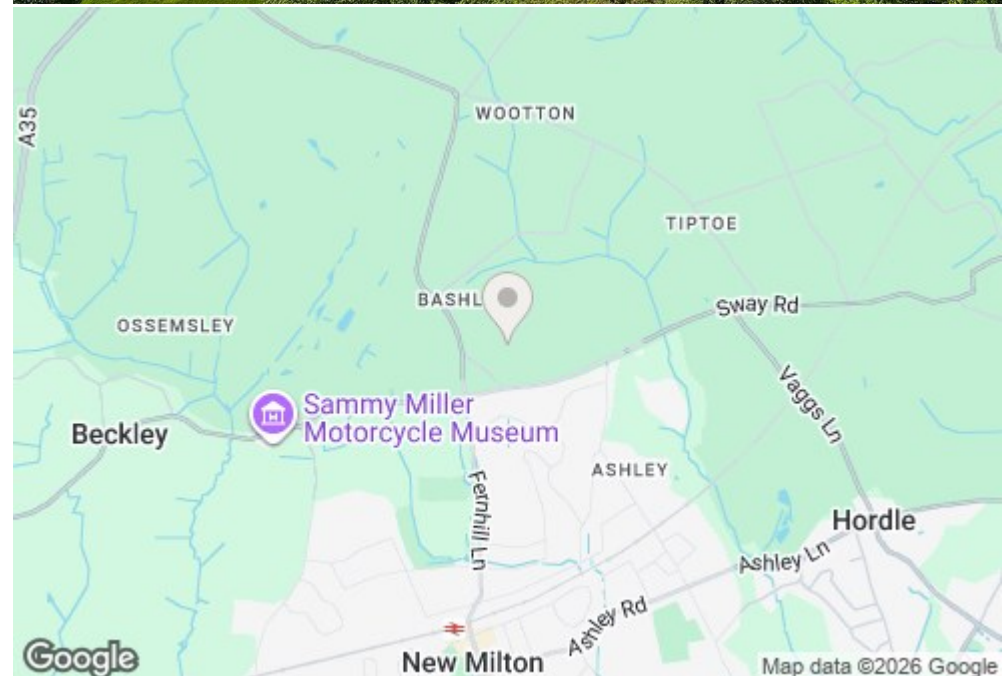
'Whilst every attempt has been made to ensure the accuracy of this floor plan, the measurements of doors, windows, rooms and any other items are approximate and no responsibility is taken for any error, omission or mis-statement. This plan is for illustrative purposes only and should be used as such by any prospective purchaser.'

Plan produced using PlanUp.

227 Sycamore, Bashley Park, New Milton

Situation

Nestled in the heart of the enchanting New Forest, Hoburne Bashley is a magical retreat, offering easy access to the New Forest National Park, the clifftop and beach at Barton on Sea, and the bustling high street of New Milton. The park offers a wide range of impressive facilities, including an entertainment complex, a 9-hole golf course, heated pools, a café and brasserie, a convenience store, a multi-use games area, and a brand-new dog wash area. Residents also enjoy exclusive owner events throughout the year, and the park benefits from 24/7 on-site security for added peace of mind.





Mitchells.uk.com
info@mitchells.uk.com
01425 616411

Centenary Buildings
8-10 Old Milton Road
New Milton
Hampshire
BH25 6DT

Mitchells
1963 — TODAY

