



Ashington Drive, Stakeford, NE62 5BQ

£300,000

Harpers | POWERED BY **exp**™ UK
property people

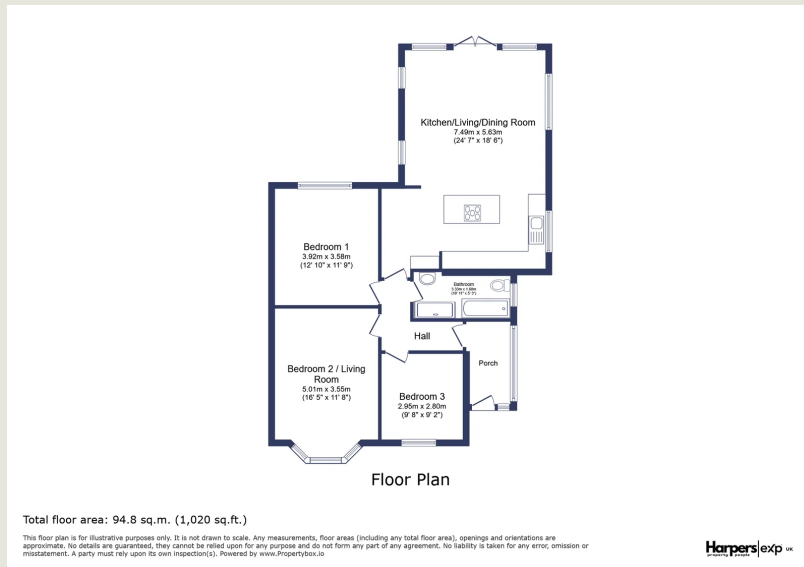
bedrooms: 3 | Bathrooms: 1 | Receptions: 1

Presenting a spectacular semi-detached bungalow on Ashington Drive, Stakeford, that has undergone significant refurbishment, offering countless upgrades from the front door inward. This property delivers impressive modern living in a desirable residential location. Step inside to discover a thoughtfully designed interior. The layout includes up to three bedrooms, with the flexibility of the second bedroom doubling as a front-aspect living room, providing adaptability to suit various needs. The property features a modern four-piece family bathroom, designed with both style and practicality in mind. The heart of this home is the impressive rear-aspect family/dining room, seamlessly integrated with a modern kitchen. This open-plan space is perfect for both everyday living and entertaining, creating a bright and inviting atmosphere. Spanning 1020 sqft, the bungalow offers comfortable and well-proportioned living areas. Externally, the property boasts generous, low-maintenance gardens at both the front and back, providing ample outdoor space for relaxation or recreation. A double driveway to the side ensures convenient off-street parking. This wonderful home comes with no onward chain, simplifying the purchasing process.

- Spectacular Semi-Detached Bungalow
- Three Bedrooms (Bedroom 2 Doubles As Front Aspect Living Room)
- Modern 4-Piece Family Bathroom
- Impressive Rear Aspect Family/Dining Room With Modern Integrated Kitchen
- Generous Low Maintenance Gardens To Front & Back
- Double Driveway To Side
- Has Undergone Significant Refurbishment Work Throughout
- Countless Upgrades From The Front Door In
- Desirable Residential Location
- No Onward Chain







Harpers Property People
 80 Windsor Gardens, Bedlington, NE22 5SY

07813 673 606
 ali@harpersproperty.com
<https://harpersproperty.com>

Harpers POWERED BY exp UK
 property people