



Holmes Road, TW1

£1,500,000

Offered with no onward chain, this fantastic period family home is split over three floors and consists of a large reception room, an open plan kitchen/dining room, utility room, four bedrooms and two bath/shower rooms.

Holmes Road is ideally located for local schools, moments from River Thames and close to Strawberry Hill mainline station with great links into London Waterloo.

Features

- Four Double Bedrooms
- Underfloor Heating
- Utility Room
- Private Garden
- Summer House
- No Onward Chain



Holmes Road, TW1

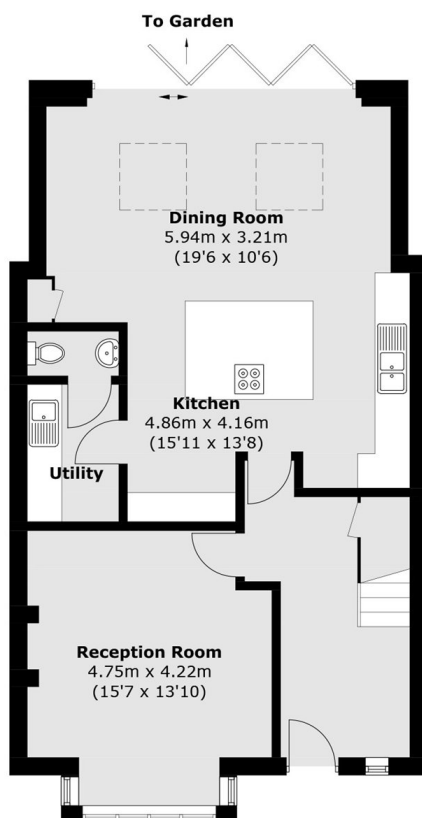
Presented in immaculate condition throughout is this four double bedroom family home which is split over three floors and set in the heart of Strawberry Hill.

The ground floor consists of a large reception room with a working wood burning stove, a stunning open plan kitchen/dining room with underfloor heating and bi-folding doors, a large utility room and a downstairs WC.

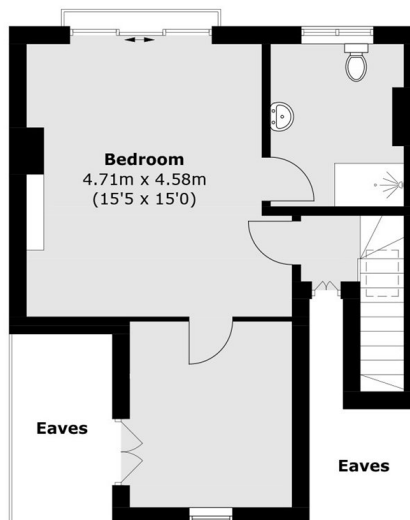
To the first floor there are three double bedrooms, a large four-piece bathroom suite and on the top floor there is the master bedroom with a Juliet balcony, a dressing room and modern en suite. To the rear there is a private garden with a summer house.



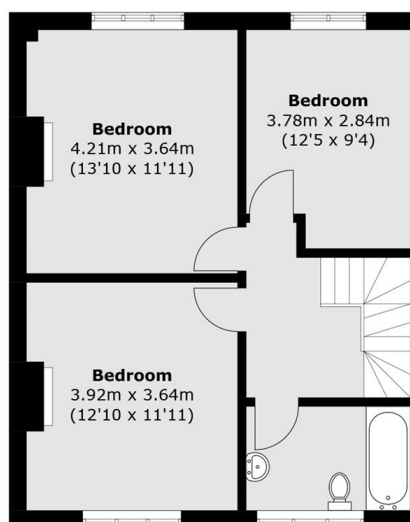
Holmes Road, Strawberry Hill, TW1



Ground Floor



Second Floor



First Floor

Total area (approx.): 171.6 sq. m (1,847.0 sq. ft)
(Excluding Eaves)

Dexters

Twickenham
84 Heath Road
Twickenham
TW1 4BW
Sales
020 8744 0074

Energy Rating: C. We aim to make our particulars both accurate and reliable. However they are not guaranteed; nor do they form part of an offer or contract. If you require clarification on any points then please contact us, especially if you're traveling some distance to view. Please note that appliances and heating systems have not been tested and therefore no warranties can be given as to their good working order.

RICS | Regulated
Estate Agent
and Letting Agent

dexters.co.uk