

# **FOLLATON HOUSE**

## **15 PARKSIDE**

NORTH LEIGH OX29 6SG

# FOLLATON HOUSE

15 PARKSIDE, NORTH LEIGH OX29 6SG

Enjoying a desirable, tucked-away position in the heart of this thriving village which lies about three miles from Witney, a fabulous home built by a local builder, and one that has been in the the same ownership for over 20 years. Beautifully presented throughout the house offers stylish, light-filled accommodation alongside a delightful, generous garden. The contemporary kitchen is fitted with a superb Rangemaster stove, and the sitting room with feature fireplace is a lovely spot for the family to relax with doors opening out to the garden. The separate dining room offers ample space for family entertaining. Externally, the lovely garden with a westerly aspect affords a high degree of privacy and has been thoughtfully landscaped with low-maintenance in mind. The paved area is ideal for alfresco dining.

## GUIDE PRICE

**£650,000**



5



2



3



Landscaped





**15 Parkside, Witney, OX29 6SG**

Approximate Gross Internal Area = 172.14 sq m / 1853 sq ft  
(Including Garage)

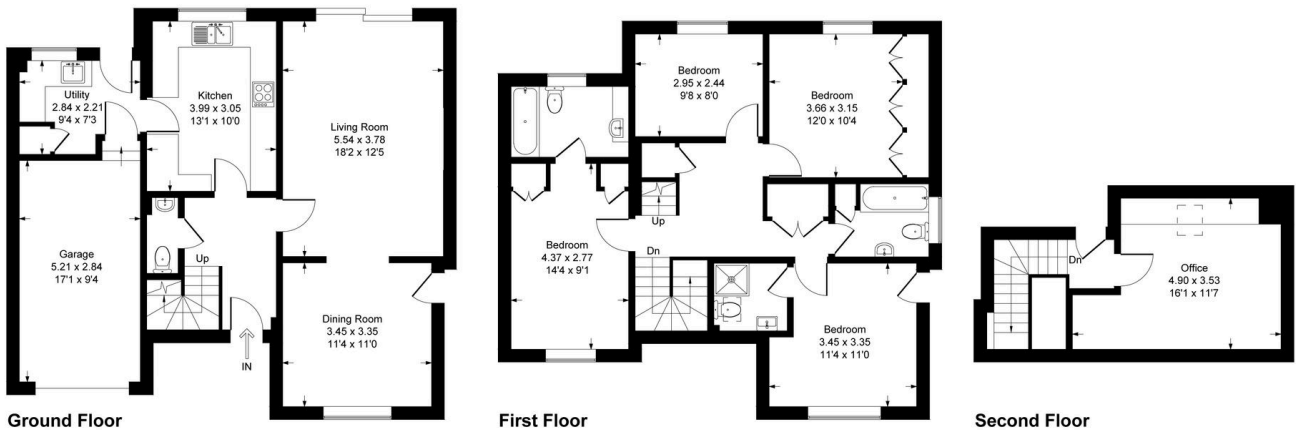


Illustration for identification purpose only, measurements approximate, and not to scale.

**Council Tax:**

Band F - £3,458.56

**Parking:**

Garage & Driveway

**Local Authority:**

Oxford City Council

# LOCATION

North Leigh lies midway between Woodstock and Witney and has a village shop/post office, library, church and pub. A bus service operates to Oxford (9 miles) and the local market town of Witney (3 miles). A landmark is the disused windmill located at the heart of the village. It boasts an excellent primary school and sports teams for both cricket and football, the Memorial Hall which hosts many local activities, and that there is a Youth Club with its own premises. A small supermarket and further amenities are available in nearby Long Hanborough. There are many good country walks nearby. Oxford is also easily accessed via the A40 and at Hanborough station there are regular trains into Oxford/London. The nearby market town of Witney also has a variety of shops, restaurants, a leisure centre and cinema.



# OUR NETWORK OF OFFICES ACROSS OXFORDSHIRE



**Every office** has access to **every buyer** registered across our network of seven offices.

Sharing a single database of buyers ensures maximum exposure for our clients.

## Witney Sales

10 Market Square  
Witney  
Oxfordshire  
OX28 6BB

t: 01993 776 775  
e: [witney@breckon.co.uk](mailto:witney@breckon.co.uk)



FROM LEFT: Alex Chappell, Sarah Thomas, Julia Briggs, Rose McDermott and John Bower

## BRECKON REWARDS

Scan to find out more!



### Summertown

t: 01865 310 300 (sales)  
t: 01865 20 1111 (letting)  
e: [summertown@breckon.co.uk](mailto:summertown@breckon.co.uk)

### Oxford City Centre

t: 01865 244 735 (sales)  
t: 01865 20 1111 (letting)  
e: [post@breckon.co.uk](mailto:post@breckon.co.uk)

### Headington

t: 01865 750 200 (sales)  
t: 01865 763 999 (letting)  
e: [headington@breckon.co.uk](mailto:headington@breckon.co.uk)

### Abingdon-on-Thames

t: 01235 550 550 (sales)  
t: 01235 554 040 (letting)  
e: [abingdon@breckon.co.uk](mailto:abingdon@breckon.co.uk)

### Woodstock

t: 01993 811 881 (sales)  
t: 01993 810 100 (letting)  
e: [woodstock@breckon.co.uk](mailto:woodstock@breckon.co.uk)

### Bicester

t: 01869 24 24 23 (sales & letting)  
e: [bicester@breckon.co.uk](mailto:bicester@breckon.co.uk)

### New Homes

t: 01865 261 222  
e: [newhomes@breckon.co.uk](mailto:newhomes@breckon.co.uk)

### Land Team

t: 01865 558 999  
e: [land@breckon.co.uk](mailto:land@breckon.co.uk)

### Letting and Property Management

t: 01865 20 1111  
e: [lettings@breckon.co.uk](mailto:lettings@breckon.co.uk)

### Creative Department

t: 01865 310 300  
e: [creative@breckon.co.uk](mailto:creative@breckon.co.uk)



[breckon.co.uk](http://breckon.co.uk)