



Dulwich Road, SE24

2 bedroom house for sale

£875,000

Freehold

Property Details

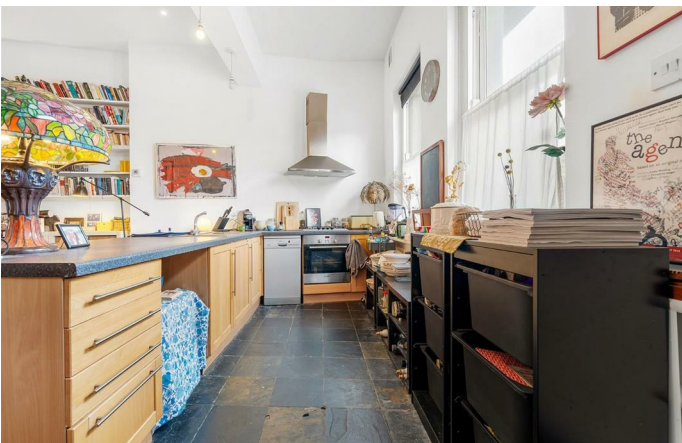
A rare offering — an iconic two double bedroom house with a beautifully landscaped garden, set on Dulwich Road in the heart of Herne Hill, directly opposite Brockwell Park. Measuring over 1,150 square feet, this distinctive home is rich in period charm and offers an ideal layout for entertaining and everyday life. The property's striking façade, complete with the historic Antique Furniture ghost sign, enjoys excellent kerb appeal. The ground floor unfolds into a superb open-plan living space of over nine metres, flooded with natural light from large French doors leading to the garden. Defined zones for living, dining, and cooking are complemented by wooden floors, built-in shelving, and a sociable kitchen peninsula. The stunning landscaped garden, newly paved five years ago, provides a peaceful retreat for al fresco dining. Upstairs, two generous double bedrooms are separated from one another for privacy, the principal is particularly spacious, easily accommodating a comfortable seating area if desired. A central bathroom is neutrally presented, featuring a skylight and rain shower with fitted bench seat. A rare opportunity to acquire this charming, distinctive home.

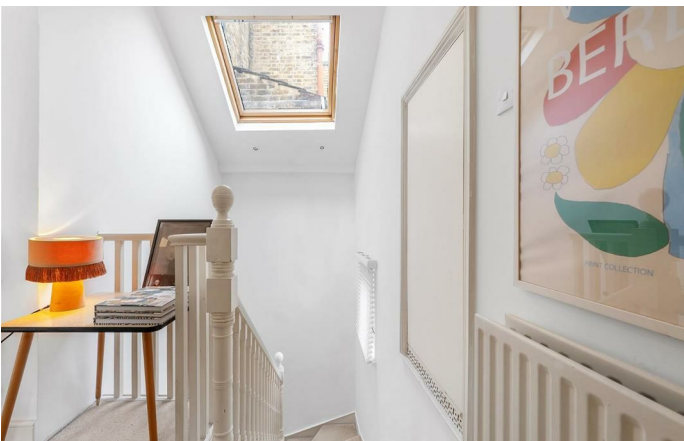
Council tax band E

EPC rating D (66)

Features

- Iconic house with the historic Antique Furniture ghost sign
- Two double bedrooms
- Large private garden
- Victorian house
- Over 1,150 square feet
- Local cafes, shops and restaurants
- Moments to Brockwell Park
- An eight-minute walk to both Brixton and Herne Hill Centres
- Victoria Line and Thameslink trains, plus a bus stop moments away
- Freehold. Chain-free.

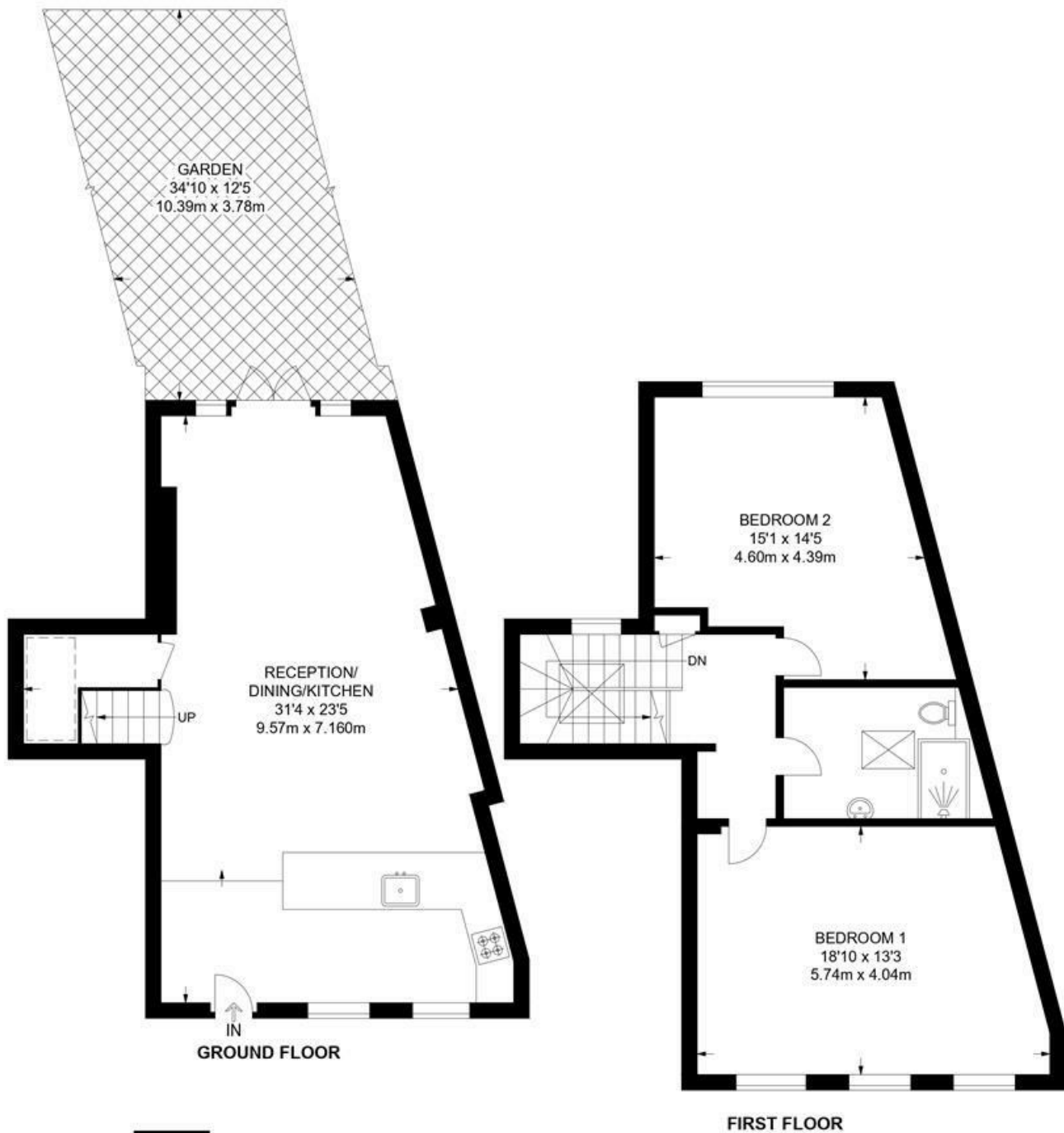




Dulwich Road, SE24

Dulwich Road, SE24
2 Bedroom House

APPROXIMATE GROSS INTERNAL AREA: 1152 SQ FT / 107 SQ M



While we try our very best, floor plans are produced as a guide only and we take no responsibility for the precise accuracy with which any property is represented.

Dulwich Road, SE24

