



HINCHLIFFE  
HOLMES



2 WATERLOO HOUSE



Entrance Hall | Kitchen | Lounge-Dining Room

Bedroom One - En-Suite | Bedroom Two | Bathroom

**OUTSIDE**

Parking | Gardens

## 2 WATERLOO HOUSE

Marine Approach | Northwich | CW8 1GH

Positioned within walking distance of Northwich town centre, this fabulous two bedroom ground floor apartment is offered to the market with no onward chain. Featuring an open plan dining living room alongside allocated parking and shared communal area.

Northwich town centre has a range of independent and established retail chains. There are several supermarkets including Sainsburys, Tesco, Aldi, Lidl and Waitrose. The town has a state of the art leisure centre, cinema complex, restaurant quarter and attractive landscaped walking routes along the new riverside development. Northwich and surrounds are renowned for its superb educational facilities catering for all age groups, including the highly

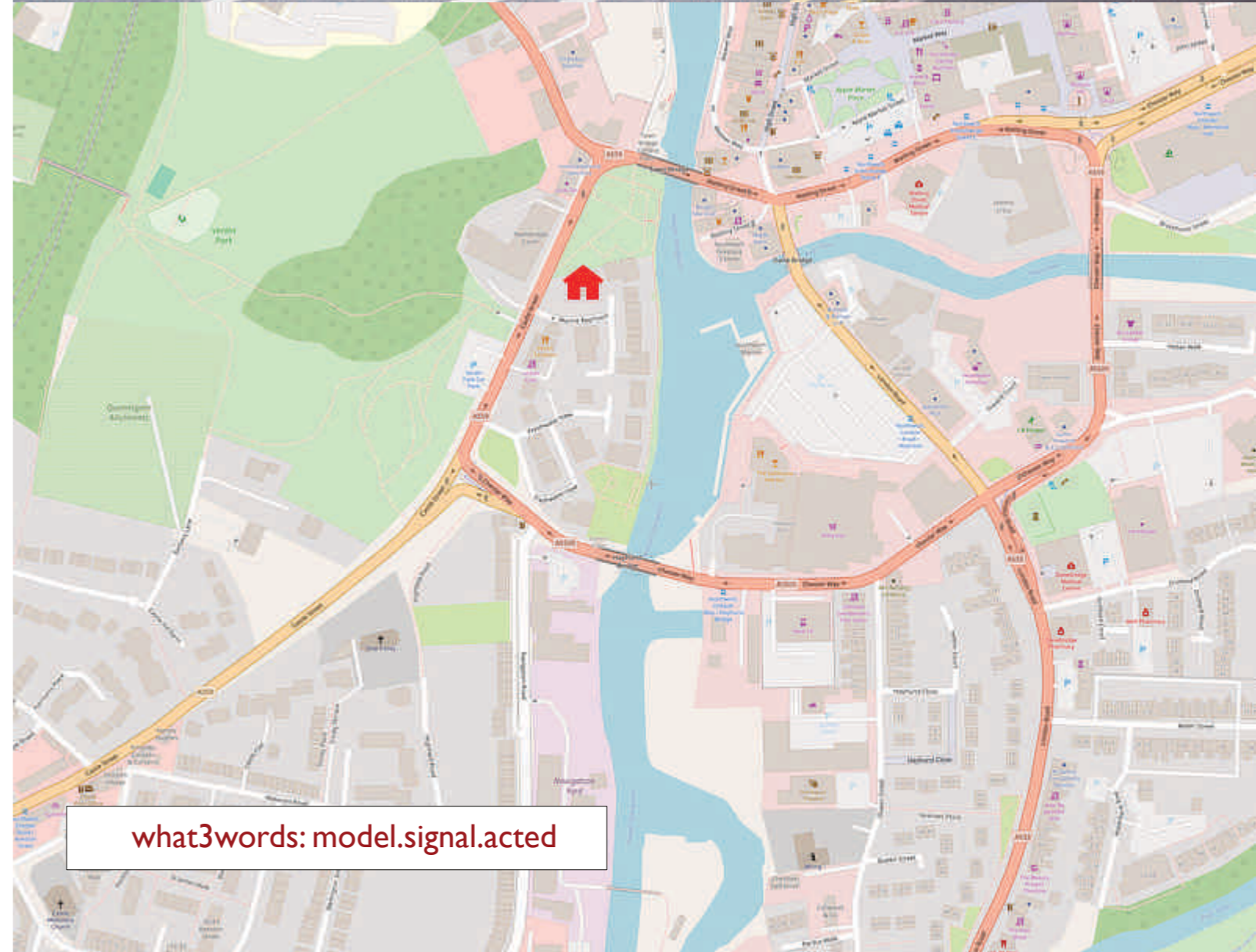
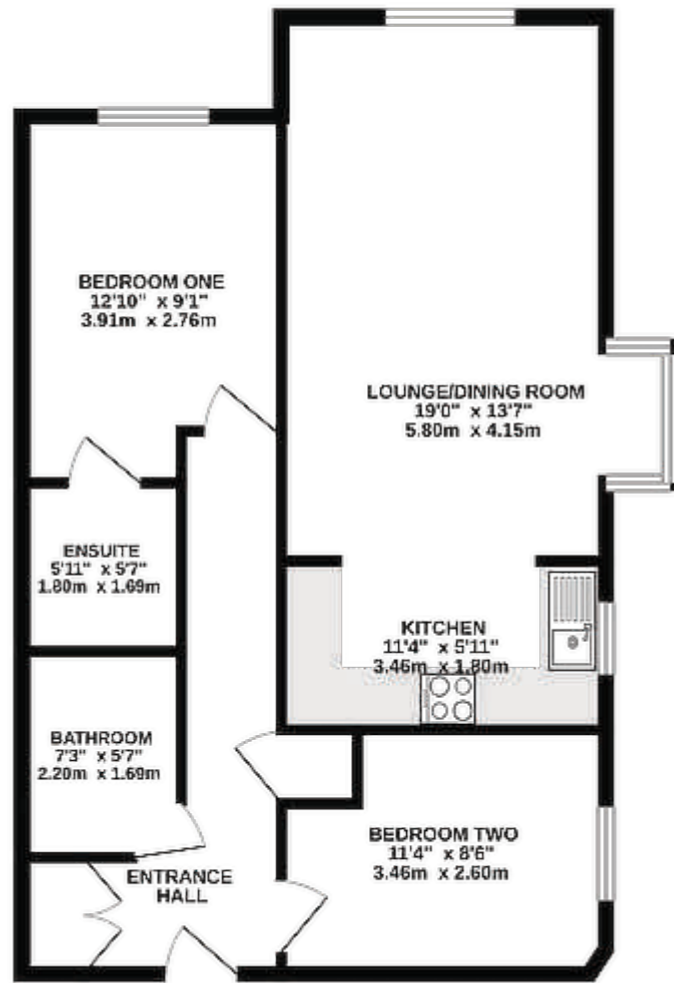
reputable and very popular Kingsmead Primary School, Grange School (junior and secondary level), St Nicholas's Roman Catholic high school with Sir John Deane's Sixth Form and further education college which is within a few moments stroll of the property. Road access to the M6 and M56 is afforded by the A556 and the A49, making commuting to Chester, Warrington, Liverpool and Manchester and Media City UK easily accessible, whilst Liverpool and Manchester International Airports can be accessed within 45 minutes' drive. There are railway stations at Northwich and Greenbank (Manchester to Chester line) and Hartford and Acton Bridge (Liverpool - Crewe - London). In contrast, there are pleasant river walks and cycle paths nearby.







663 sq.ft. (61.6 sq.m.) approx.



**TENURE**

Leasehold. Subject to verification by Vendor's Solicitor.

**SERVICES (NOT TESTED)**

We believe that mains water, electricity, central heating and drainage are connected.

**LOCAL AUTHORITY**

Cheshire West And Chester. Council Tax – Band C.

**POSSESSION**

Vacant possession upon completion.

**VIEWING**

Viewing strictly by appointment through the Agents.

NOTICE: Hinchliffe Holmes for themselves and for the vendors or lessors of this property whose agents they are give notice that:

(i) the particulars are set out as a general outline only for the guidance of intending purchasers or lessees, and do not constitute, nor constitute part of, an offer or contract;

(ii) all descriptions, dimensions, references to condition and necessary permissions for use and occupation, and other details are given in good faith and are believed to be correct but any intending purchasers or tenants should not rely on them as statements or representations of fact but must satisfy themselves by inspection or otherwise as to the correctness of each of them;

(iii) no person in the employment of Hinchliffe Holmes has any authority to make or give any representation or warranty whatever in relation to this property.

(iv) Whilst every attempt has been made to ensure the accuracy of the floor plan contained here, measurements of doors, windows, rooms and any other items are approximate and no responsibility is taken for any error, omission, or mis-statement. This plan is for illustrative purposes only and should be used as such by any prospective purchaser. The services, systems and appliances shown have not been tested and no guarantee as to their operability or efficiency can be given.

what3words: model.signal.acted



Hinchliffe Holmes is an award winning independent family estate agency positioned in the heart of Cheshire with offices in Tarporley and Northwich.

The business was founded with a passion for providing properties that are accessible to clients at all stages of their working and family lives. Most importantly it provides an exciting

approach to the property market meeting the personal needs of our clients.

Hinchliffe Holmes specialises in the sale of town and country properties, shaping its reputation on a bespoke level of quality advice, superb local knowledge and exceptional customer service, along with maximum exposure of all properties through our wide advertising and marketing ability.

### EXCLUSIVE LISTINGS

An Exclusive Listing is a home sale that is not listed on the open market and therefore it is sold off-market using more private and discrete methods.

Your home is one of a kind, the process of selling should be unique to you and your needs. Not all home sellers follow the traditional route when putting their home on the market. For some, an Exclusive Listing, can be the right method to sell their home.

### LAND & NEW HOMES

The team at Hinchliffe Holmes offer experienced and professional advice for the purchase and sale of land, property development and the purchase of newly built and developed property.

### MORTGAGES

The Hinchliffe Holmes team is committed to providing the best possible service and advice. Our team of skilled and caring advisors will guide you through the mortgage application, removing the stress and simplifying the whole process.

### LETTINGS

With our bespoke and personal approach, Hinchliffe Holmes has a tailored range of services to suit your needs as a Landlord. Our expert team will showcase your property to thousands of potential tenants each month.

### PROPERTY MANAGEMENT

With various service options to choose from, you can decide which package suits your requirements, and as an independent agent we can tailor-make each service for each landlord.

more than  
**30,000**  
viewings arranged

**£600 MILLION**  
worth of property sold

on average  
**99.1%**  
of asking price achieved

**OVER 7,000 OFFERS**





**HINCHLIFFE  
HOLMES**

**INDEPENDENT ESTATE AGENTS**

**SALES | LETTINGS | MORTGAGES  
LAND & NEW HOMES | PROPERTY MANAGEMENT**

**TARPORLEY OFFICE**

56B High Street, Tarporley, Cheshire, CW6 0AG

01829 730 021 - [tarporley@hinchliffeholmes.co.uk](mailto:tarporley@hinchliffeholmes.co.uk)

**NORTHWICH OFFICE**

28 High Street, Northwich, Cheshire, CW9 5BJ

01606 330 303 - [northwich@hinchliffeholmes.co.uk](mailto:northwich@hinchliffeholmes.co.uk)

[www.hinchliffeholmes.co.uk](http://www.hinchliffeholmes.co.uk)