



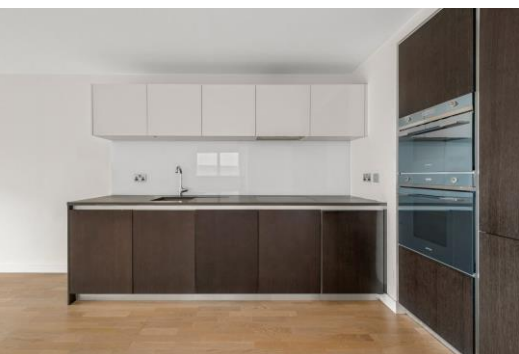
# Pump House Crescent

Brentford, TW8

£2,400 per month  
(£553.85 per week)

Offering fabulous views towards the river, a south facing, light and spacious two bedroom, two bathroom apartment on the first floor of this stylish modern development.

**CHESTERTONS**



# Pump House Crescent

## Brentford, TW8

- Two Double Bedrooms
- Two Bathrooms
- Modern & Spacious
- Private Balcony
- Communal Gardens
- 24 Hour Concierge
- Residents Gym
- Video entry phone system





Offering fabulous views towards the river, a southerly facing, light and spacious two bedroom, two bathroom apartment on the first floor of this stylish modern development.

The apartment comprises, a spacious open plan reception/kitchen, master bedroom with built in wardrobes and en-suite shower room, second double bedroom, a modern bathroom and a second modern shower room.

The property further benefits; underground parking, 24 hour concierge, video entry phone system, private river-facing balcony, residents gymnasium and delightful communal gardens. Viewings highly recommended.

---

<b>Minimum Term:</b>	<b>12 months</b>
<b>Deposit Required:</b>	<b>five weeks</b>
<b>Local Authority:</b>	<b>Hounslow Council</b>
<b>Council Tax Band:</b>	<b>E</b>
<b>EPC Rating:</b>	<b>C</b>
<b>Unfurnished</b>	

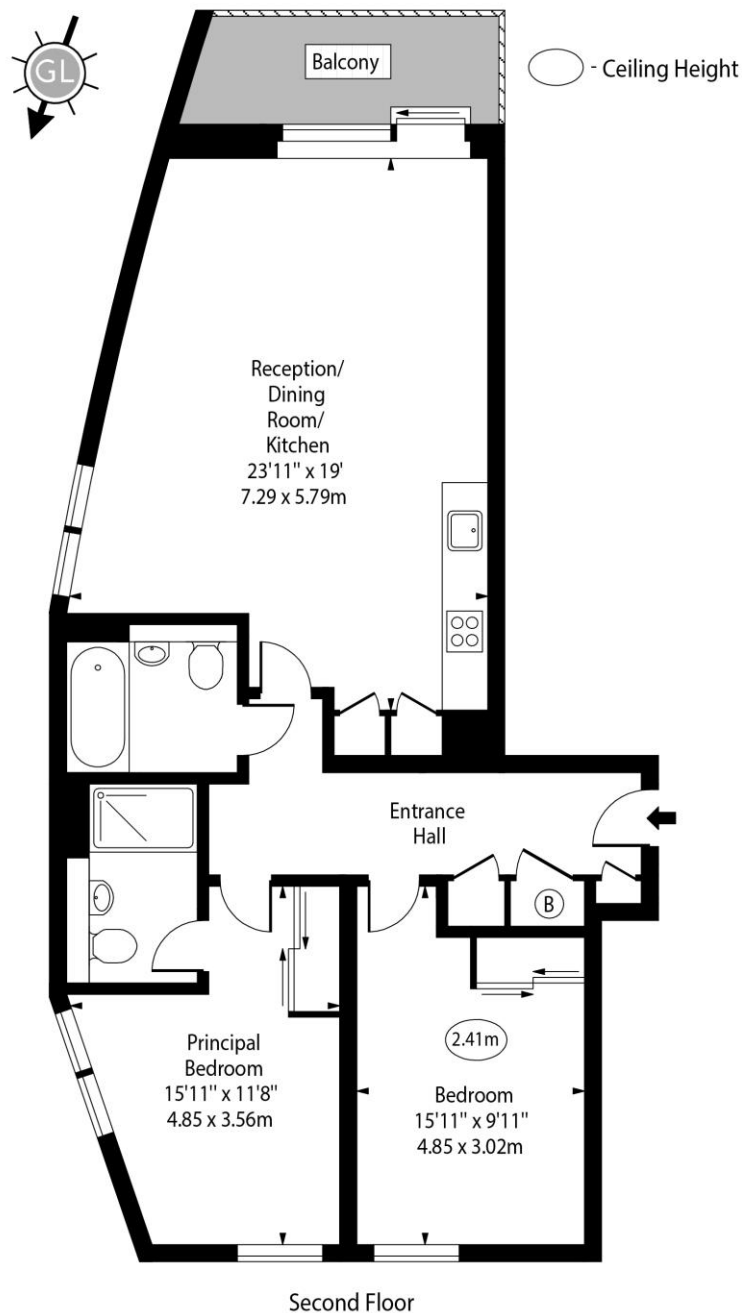
---

### *Chestertons Kew Lettings*

1 Royal Parade  
Richmond  
Surrey  
TW9 3QD  
kewlettingsusers@chestertons.co.uk  
02081040340  
chestertons.co.uk

Additional tenant charges apply (fees apply to non-AST tenancies only)  
Tenancy Agreement Fee: £300  
References per Tenant/Guarantor: £60  
Inventory check (approx. £100 – £250 inc. VAT)  
[chestertons.co.uk/property-to-rent/applicable-fees](https://www.chestertons.co.uk/property-to-rent/applicable-fees)

# Hyperion Tower, Pump House Crescent, TW8



Approx Gross Internal Area 930 Sq Ft - 86.40 Sq M

Every attempt has been made to ensure the accuracy of the floor plan shown. However, all measurements, fixtures, fittings, and data shown are approximate interpretations and for illustrative purposes only. Measured according to the RICS. Not To Scale.

[www.goldlens.co.uk](http://www.goldlens.co.uk)

Ref. No. 030208E

