



## Shirland Road, W9

£700,000

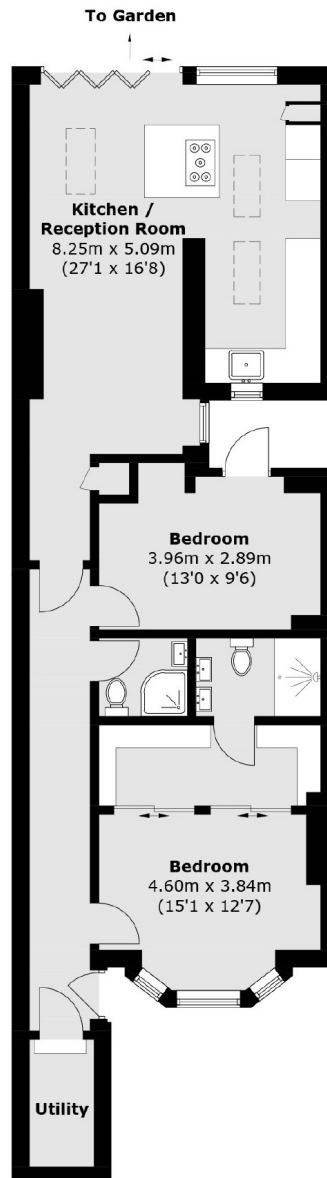
A garden flat set in a Victorian conversion. This well-presented property comes complete with two double bedrooms, one of which enjoys access to an en suite and walk-in wardrobe, an open-plan kitchen/reception and a utility room.

Shirland Road is within walking distance of Paddington Recreation Ground, various shops and restaurants, and the transport links of both Maida Vale and Warwick Avenue.

### Features

- Private Entrance
- Two Bathrooms
- Open Plan Kitchen/Reception
- Ample Storage
- Great Transport Links
- Large Private Garden

# Shirland Road, Maida Vale, W9



**Lower Ground Floor**

Total area (approx.): 77.9 sq. m (838.5 sq. ft)