

Charles Street, N19

£550,000

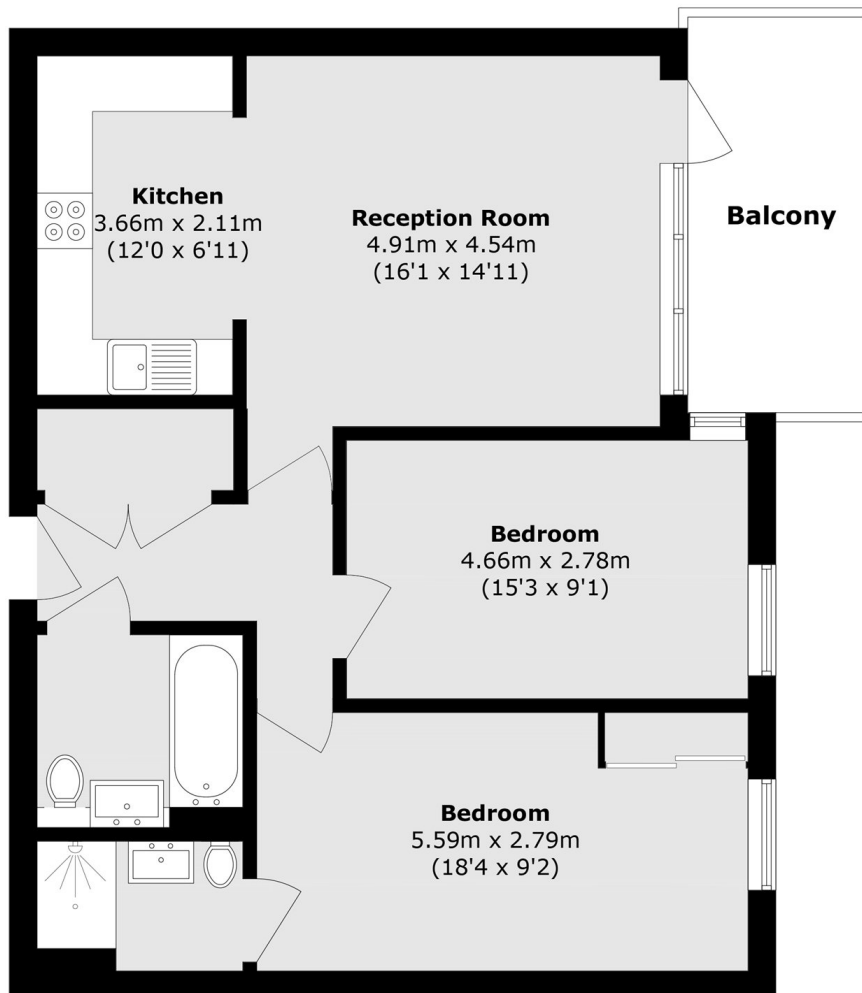
Set within a warehouse conversion, this two bedroom, two bathroom second floor apartment has an open plan reception room/kitchen, a private balcony and high-specification finishes throughout.

Charles Street offers a peaceful setting with easy access to local shops, cafés, and transport links. It's well-connected for commuting, while nearby green spaces and cultural spots add to the appeal of this area.

Features

- Warehouse Conversion
- Private Balcony
- Open Plan Living
- Two Bedrooms
- Two Bathrooms
- Good Transport Links

Charles Street, London, N19



Total area (approx.): 71.8 sq. m (772.8 sq. ft)

Balcony area (approx.): 8.1 sq. m (87.1 sq. ft)