



**WETHERELL**  
MAYFAIR'S FINEST PROPERTIES



## Down Street Mews, W1J

£9,970 PCM

A beautifully refurbished and interior designed, two double bedroom, two bathroom apartment set in a secure, gated mews close to Green Park, in the heart of Mayfair.

The property has been refurbished by a leading interior designer to create a wonderful, bright contemporary space with exposed brick work, wooden flooring and luxurious built-in furniture and fixtures and fittings.

The lofty reception room has excellent dining and entertaining space with bespoke designer kitchen flooded by natural light and with a private balcony, air-conditioning and luxurious bathrooms.

The property is located adjacent to Hyde Park and Green Park and close to all the luxury shops, boutiques, hotels, restaurants and private members clubs as well as a variety of galleries and museums.

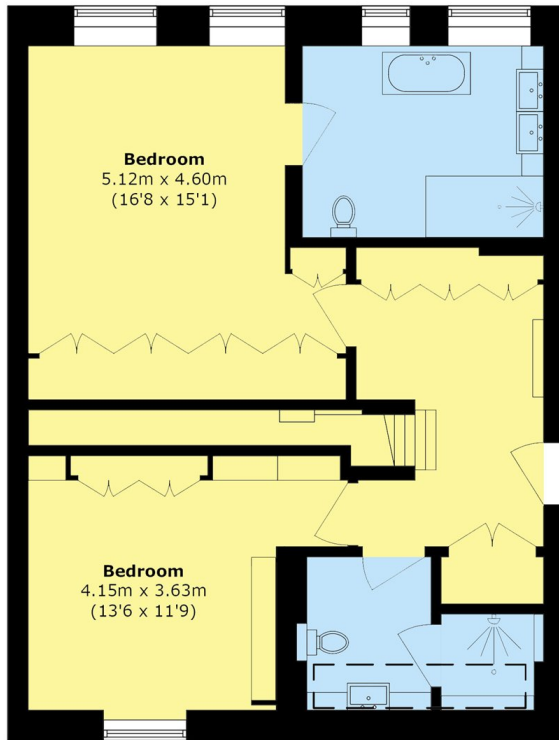


## FEATURES

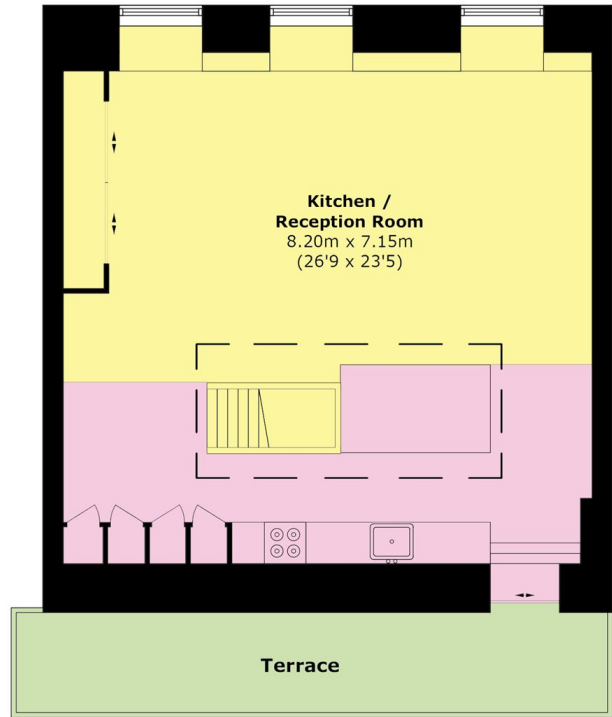
- Two Spacious Double Bedrooms • Two Luxury Bathrooms • Interior Designed • Wooden Flooring • Air-Conditioning • Private Balcony •



# Down Street Mews, London, W1J



**First Floor**



**Second Floor**

Total area (approx.): 137.6 sq. m (1481.1 sq. ft)

Terrace area (approx.): 8.2 sq. m (88.6 sq. ft)



**WETHERELL**  
MAYFAIR'S FINEST PROPERTIES

102 Mount Street,  
London, W1K 2TH

T: 020 7529 5588

E: [rentals@wetherell.co.uk](mailto:rentals@wetherell.co.uk)

We aim to make our particulars both accurate and reliable. However they are not guaranteed; nor do they form part of an offer or contract. If you require clarification on any points then please contact us, especially if you're traveling some distance to view. Please note that appliances and heating systems have not been tested and therefore no warranties can be given as to their working order.



[wetherell.co.uk](http://wetherell.co.uk)