

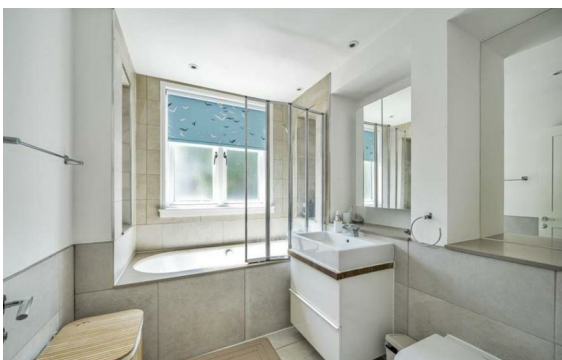


Mornington Crescent, Camden, London, NW1

Rent £1,550 Per Month

4 Bed | 2 Bath | 2 Reception

Please call us on 020 7724 2233 or email us info@newingtonstates.com to book a viewing.



This stylish four-bedroom townhouse is arranged over four floors and offers generous living space in a quiet residential setting close to Camden.

The property features a bright reception and dining area, a fully integrated kitchen with family space, bi-folding doors leading to a private patio garden, four double bedrooms, two bathrooms, a guest WC, utility room and excellent storage.

Located close to Camden High Street, it benefits from excellent access to shops, cafés, restaurants, Mornington Crescent Underground Station, Euston Station and Regent's Park.

Energy Efficiency Rating: D

Agents Note: Whilst every care has been taken to prepare these particulars, they are for guidance purposes only. All measurements are approximate and are for general guidance purposes only and whilst every care has been taken to ensure their accuracy, they should not be relied upon and potential buyers/tenants are advised to recheck the measurements.

NEWINGTON
— ESTATES —

60 Upper Montagu Street

London

W1H 1SN

020 7724 2233

info@newingtonestates.com

<http://www.newingtonestates.com>