



Manchester Street, W1U

£865 Per week

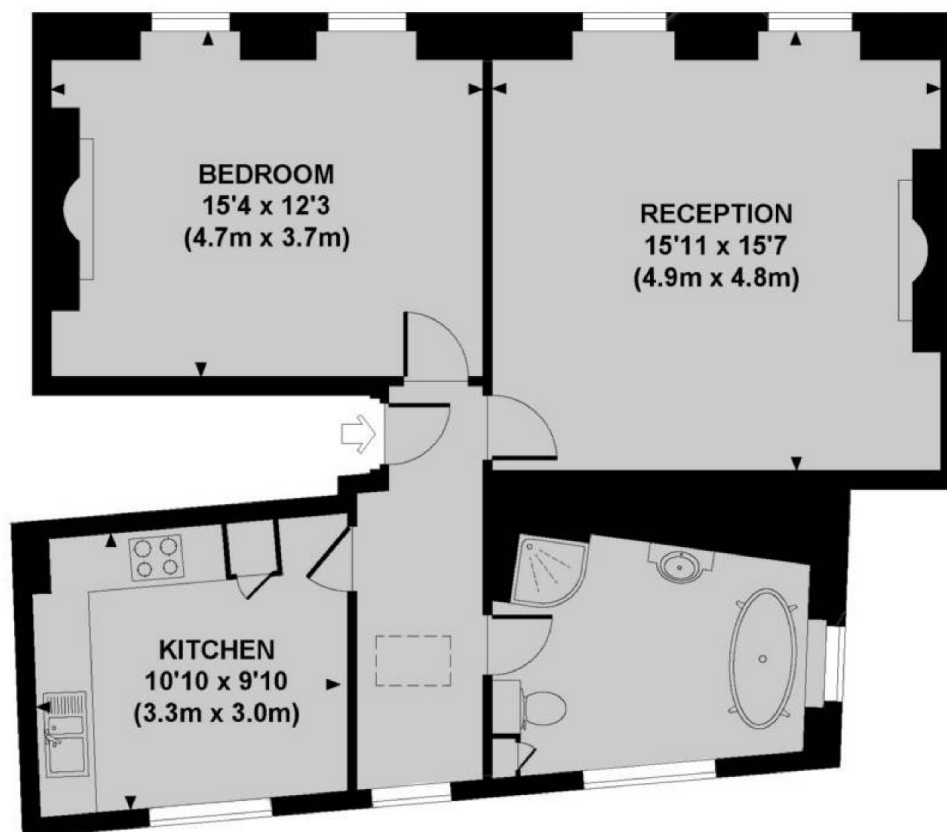
A one bedroom apartment on the first floor of this Georgian conversion in the heart of Marylebone Village. The property has high ceilings throughout with a good sized reception room, separate kitchen, double bedroom and bathroom.

Manchester Street is an attractive street in the heart of Marylebone Village made up of predominantly Georgian buildings. Situated between Marylebone High Street and Chiltern Street, with an abundance of independent boutique shops, cafes, bars and restaurants nearby.

Features

- One Bedroom
- One Bathroom
- Unfurnished
- Owned and Managed by The Portman Estate
- Complimentary Membership to Portman Concierge

Manchester Street, London, W1U



FIRST FLOOR

Approx. gross internal area
717 Sq Ft. / 66.7 Sq M.

Dexters

Marylebone
53-55 Weymouth Street
London
W1G 8NJ
Lettings
0207 224 5545

Energy Rating: D. We aim to make our particulars both accurate and reliable. However they are not guaranteed; nor do they form part of an offer or contract. If you require clarification on any points then please contact us, especially if you're traveling some distance to view. Please note that appliances and heating systems have not been tested and therefore no warranties can be given as to their good working order.

 **RICS** | Regulated
Estate Agent
and Letting Agent

[dexters.co.uk](https://www.dexters.co.uk)