



## New Festival Avenue, E14 £375,000

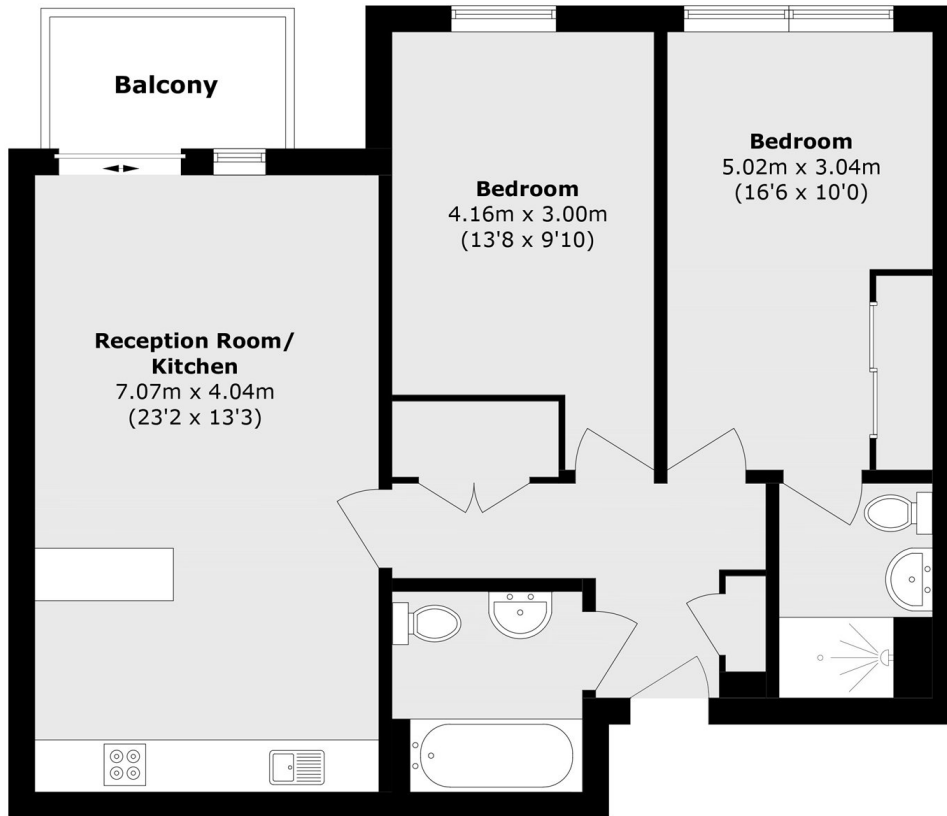
Presented to the market chain free, this two bedroom two bathroom apartment is situated in a highly sought after development. Boasting over 800 Square Feet of internal living space, this property features an open plan living/kitchen area and balcony access via a bright reception area. Additional features include two double sized bedrooms, a secure entry phone system and residents would also benefit from the use of a private gym.

Moro Apartments is situated conveniently in New Festival Avenue, 0.4 miles away from Langdon Park DLR and equidistant from All Saints DLR. Both offering easy access into the City and Canary Wharf. The area is host to a range of local amenities, including Chrisp street market.

### Features

- Two Double Bedrooms
- Balcony Access
- Residents Gym
- 844 Square Feet
- Secure Development
- Sought After Location

# New Festival Avenue, London, E14



Total area (approx.): 78.5 sq. m (844.9 sq. ft)

Balcony area (approx.): 4.0 sq. m (43.0 sq. ft)