

# Extended

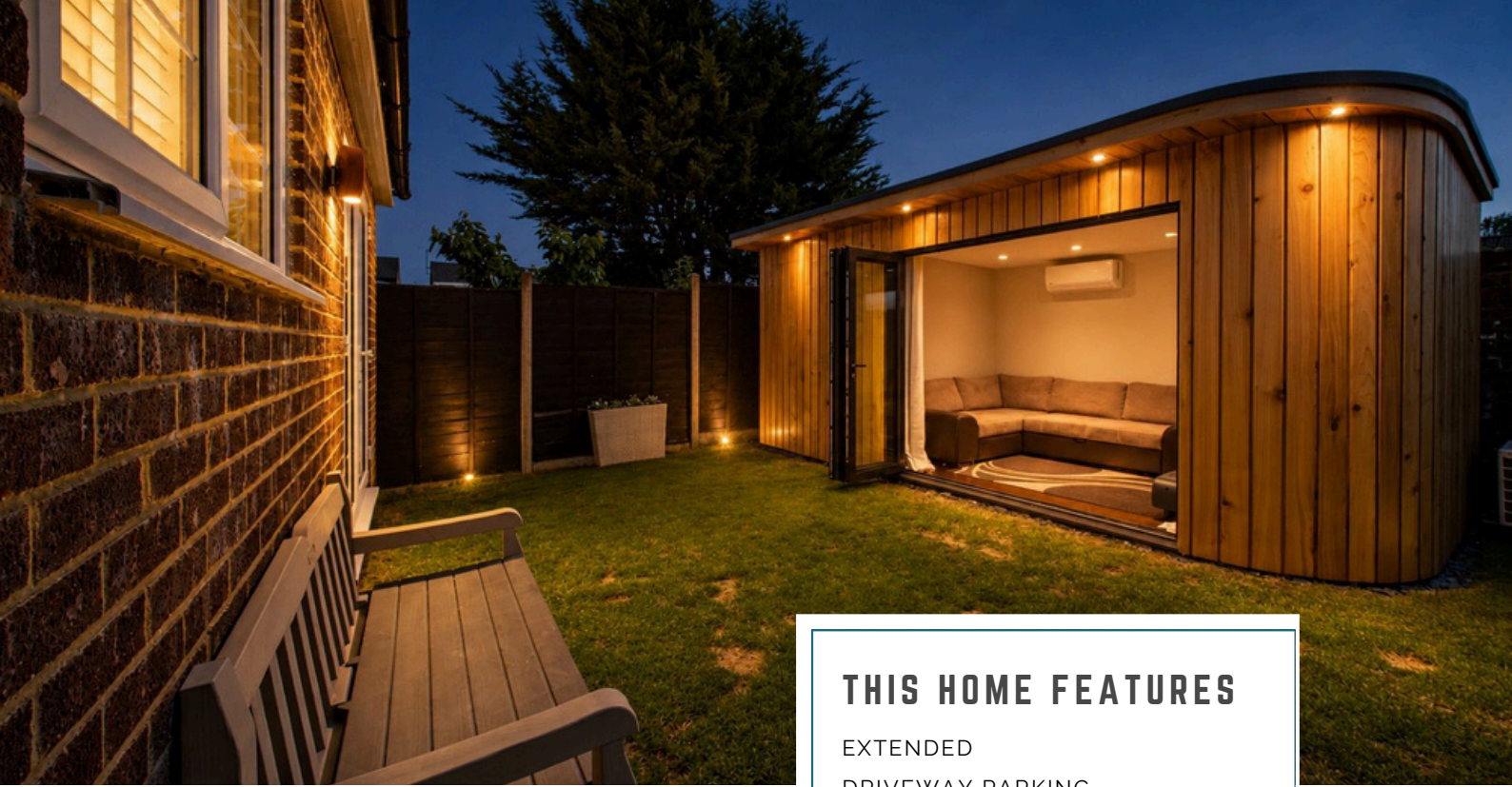
## Three Bedroom House

### AYLESBURY

1 Austen Place, Aylesbury,  
Buckinghamshire, HP19 8JD



TEL. 01296 761 331 EMAIL;  
CHASE@WESOLDIT.CO.UK



# HAYDON HILL

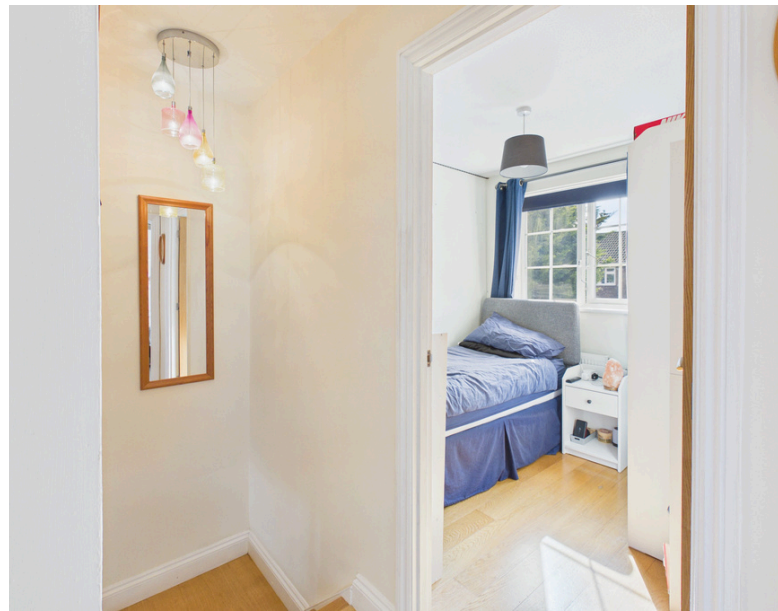
WeSoldIt are pleased to welcome to the market this beautifully upgraded three-bedroom home with a bright rear-extended kitchen/diner, solid oak flooring and antico flooring separate utility room and a stunning four-piece bathroom. Includes a bespoke fully powered garden-room office with underfloor heating and air conditioning, garage with boarded loft storage and a well-presented driveway. Planning permission and designs already approved to extend into a four-bedroom home.

## THIS HOME FEATURES

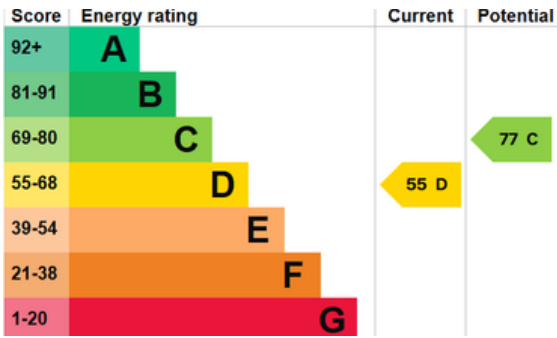
- EXTENDED
- DRIVEWAY PARKING
- SEPERATE UTILITY ROOM
- LARGE KITCHEN / DINER
- RENOVATED FAMILY BATHROOM
- DOWNSTAIRS CLOAKROOM
- PERMISSION GRANTED TO EXTEND FURTHER
- POPULAR LOCATION
- GARAGE
- HIGH QUALITY FLOORING THROUGHOUT

Outside, the well-presented driveway and garage provide strong kerb appeal, with the garage also offering a boarded loft for even more storage.









## VIEWINGS

Strictly by appointment with  
[WeSoldIt.co.uk](http://WeSoldIt.co.uk)

*MONEY LAUNDERING REGULATIONS 2017* intending purchasers will be asked to produce identification and proof of financial status when an offer is received. We would ask for your prompt co-operation in doing so to limit any delay in agreeing a sale.

*THE CONSUMER PROTECTION REGULATIONS 2008* We the Agent have not tested any apparatus, equipment, fixtures and fittings or services and cannot verify that they are in working order or fit for the purpose. We advise any buyer to obtain verification from their Solicitor or Surveyor.

The Tenure of a Property as referenced is based on information supplied by the Seller. We the Agent have not had sight of the title documents. A Buyer is advised to obtain verification from their Solicitor. We would advise you check the availability of this property before travelling any distance to view. We have taken every precaution to ensure that these details are accurate and not misleading. If there is any point which is of particular importance to you, please contact us and we will provide any information you require, or professional verification should be sought. We would recommend you do this, particularly if you intend to travel some distance to view the property. The mention of any appliances and services within these details does not imply that they are in full and efficient working order. These particulars are in draft form awaiting Vendors confirmation of their accuracy. These details must therefore be taken as a guide only and complete accuracy cannot be guaranteed. All dimensions are approximate. Floor Plan: For illustrative purposes only, not to scale.

Tel. 01296 761331

[hello@WeSoldIt.co.uk](mailto:hello@WeSoldIt.co.uk)

