

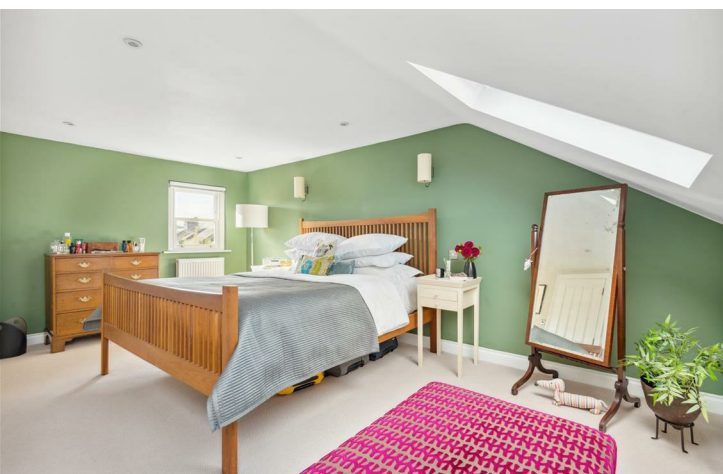


Glebe Street, London, W4
Guide Price £1,595,000

WHITMAN & CO.
SALES · LETTINGS · COMMERCIAL



A beautifully presented four-bedroom end-of-terrace Victorian house, which has been maintained to an exceptional standard throughout. Perfectly located in Chiswick's extremely popular "Glebe Estate" area, just a moment's walk from the high street with its array of boutique shops and restaurants. Accommodation provides an open-plan living area with wood flooring and a bespoke workstation, an extended kitchen/breakfast room with underfloor heating, and a basement utility room. The first floor boasts three double bedrooms, two with built-in wardrobes and a family bathroom. Upstairs leads to the fourth bedroom 'principal suite' with ease of access to the additional shower room. Landscaped front and south-facing rear gardens with side access and bike store. This wonderful end-of-terrace plot receives abundant light. Local transport links include both Turnham Green and Chiswick Park tube stations, numerous local bus routes and convenient access via the A4/M4 to Central London, Heathrow and the West. No onward chain.



Glebe Street, W4

Approximate gross internal area

145.57 sq m / 1567 sq ft

Key :
CH - Ceiling Height



Not to scale, for guidance only and must not be relied upon as a statement of fact.
All measurements and areas are approximate only

- Victorian end of terrace house
- 24'7 Reception room
- Full width kitchen/breakfast room

- Four beds/two baths
- South facing garden
- No onward chain

Tenure - Freehold
Local Authority - Hounslow
Council Tax - Band F

