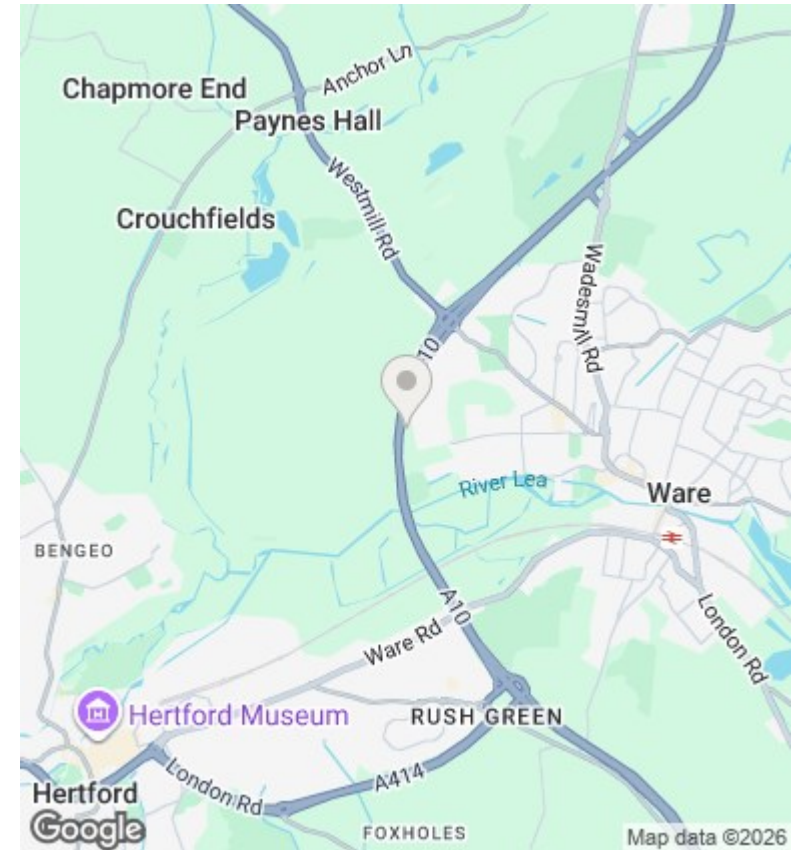
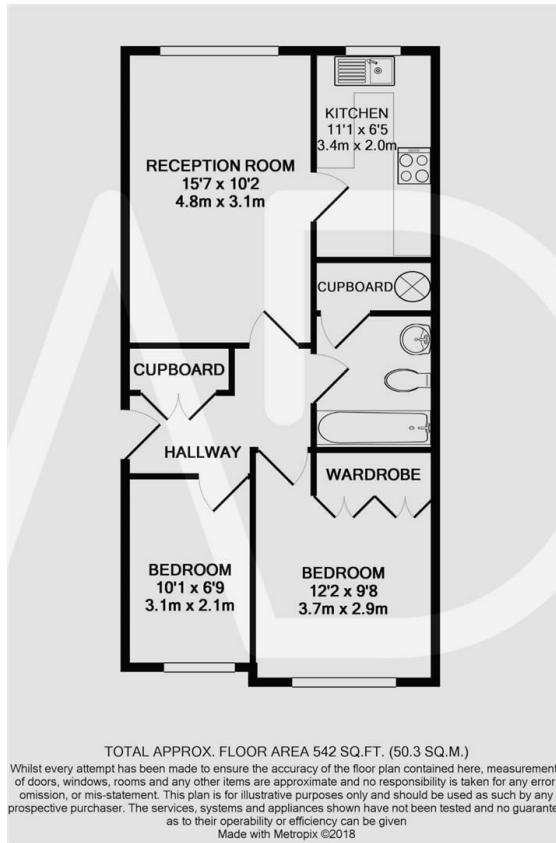




110 Trapstyle Road, Ware, Hertfordshire, SG12 0BX

£1,250 PCM

- TWO BEDROOM
- KITCHEN AND WHITE GOODS
- GROUND FLOOR FLAT
- PARKING
- LARGE RECEPTION



Directions

Viewings

Viewings by arrangement only. Call 01992 470335 to make an appointment.

Council Tax Band

B

EPC Rating:

D

Energy Efficiency Rating		Current	Potential
<i>Very energy efficient - lower running costs</i>			
(92 plus) A			
(81-91) B			
(69-80) C			78
(55-68) D		61	
(39-54) E			
(21-38) F			
(1-20) G			
<i>Not energy efficient - higher running costs</i>			
England & Wales		EU Directive 2002/91/EC	