



## Russell Road, CR4

### £400,000

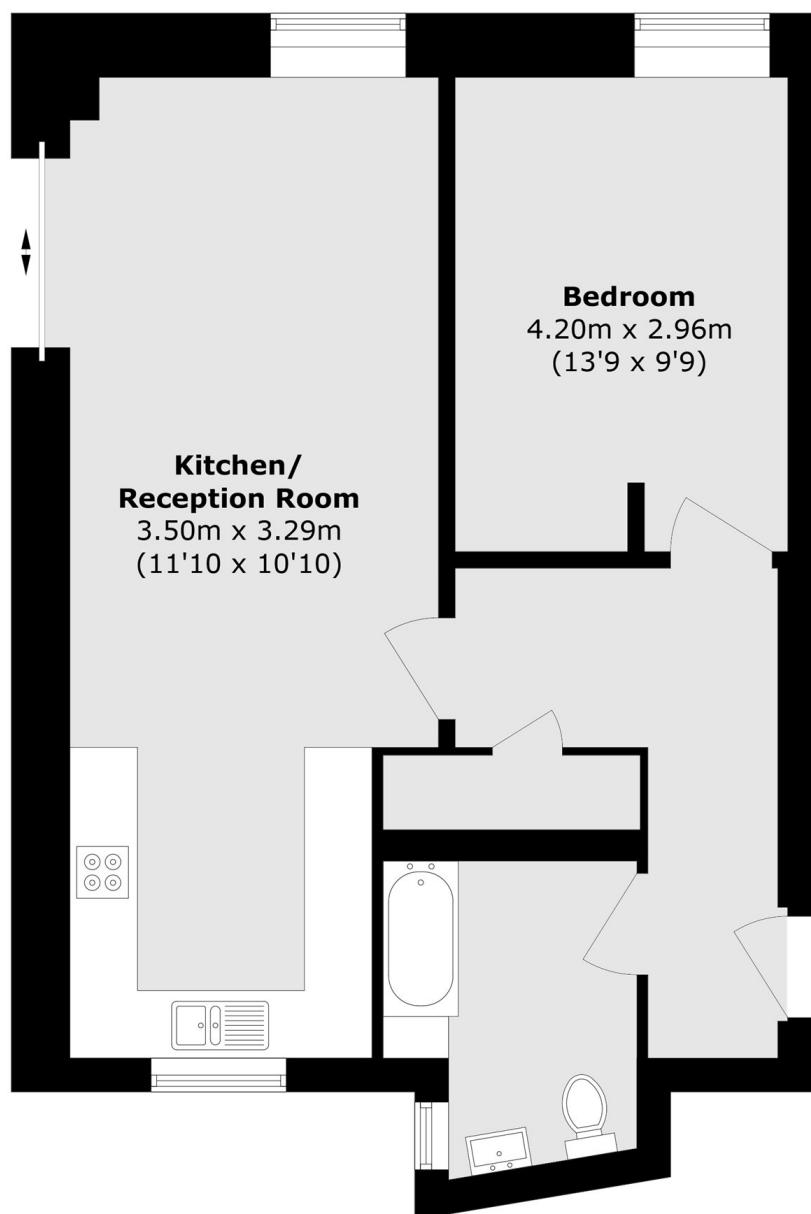
A ground floor maisonette, one double bedroom apartment with large private wrap-around garden. There is an energy efficient design throughout including gas boilers, underfloor heating and Aluminium double glazed windows. Allocated parking is also available by separate agreement.

Century House is a small boutique development of just nine apartments, all with a share of the freehold. Tucked away on Russell Road, with Wimbledon & Tooting nearby by car. The wide green open spaces of Mitcham Common is also just a short walk away with its open grassy space, wooded areas & ponds, plus various trails for walking & running.

### Features

- Maisonette Apartment
- Wrap-Around Private Garden
- Underfloor Heating
- Share Of The Freehold
- One Double Bedroom
- Quartz Worktops
- Modern Kitchens
- Bosch Oven & Hob
- Gas Boiler
- Allocated Parking By Agreement

# Russell Road, Mitcham, CR4



Total area (approx.): 60.7 sq. m (653.3 sq. ft)