



House (EPC Rating: )

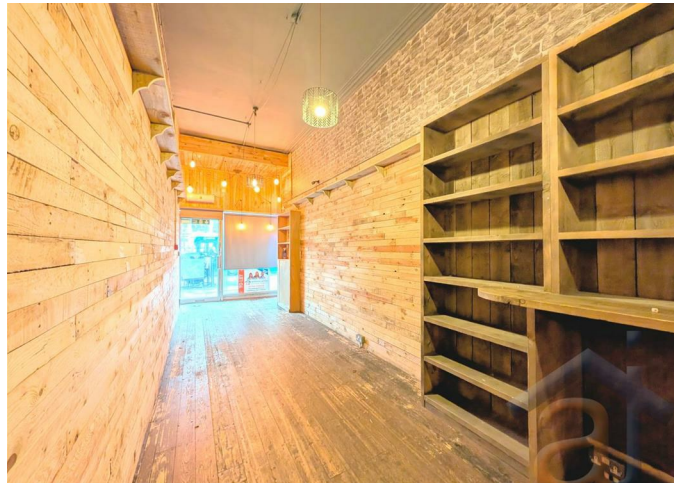
# 657 LORD STREET, SOUTHPORT, MERSEYSIDE, PR9 0AW

PCM

**£500 PCM**

## FEATURES

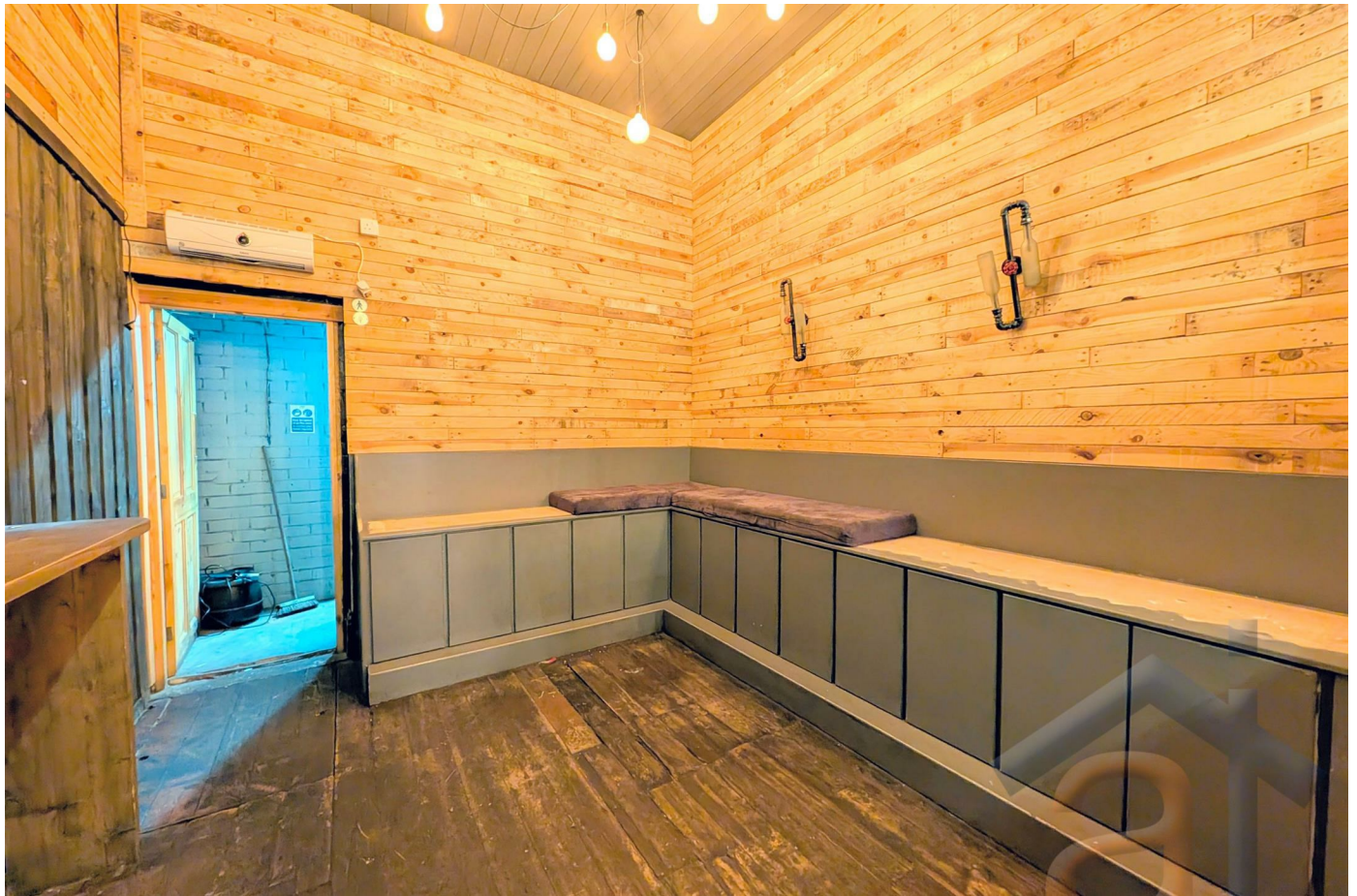
- Central position within Southport's vibrant leisure and retail district
- Flexible lease terms providing security with built-in adaptability
- Attractive frontage with scope for signage and branding
- Licensed for alcohol sales and late-night trade, enabling a wide range of hospitality concepts



**aj** anthony james  
estate agents

# 0 Bedroom House located in Southport

RENTALS | CHARLOTTE HOUSE, GROUND FLOOR, 35-37 HOGHTON STREET, SOUTHPORT, MERSEYSIDE, PR9 0NS



RENTALS | CHARLOTTE HOUSE, GROUND FLOOR, 35-37 HOGHTON STREET, SOUTHPORT, MERSEYSIDE, PR9 0NS

Call us on

01704543434

rentals@ajestateagents.co.uk  
https://www.ajestateagents.co.uk/properties/rent

Council Tax Band



Energy Efficiency Rating		Current	Potential
Very energy efficient - lower running costs			
(92 plus) <b>A</b>			
(81-91) <b>B</b>			
(69-80) <b>C</b>			
(55-68) <b>D</b>			
(39-54) <b>E</b>			
(21-38) <b>F</b>			
(1-20) <b>G</b>			
Not energy efficient - higher running costs			
<b>England &amp; Wales</b>		EU Directive 2002/91/EC	

Agents Note: Whilst every care has been taken to prepare these particulars, they are for guidance purposes only. All measurements are approximate and are for general guidance purposes only and whilst every care has been taken to ensure their accuracy, they should not be relied upon and potential buyers are advised to recheck the measurements.

