



OVER 60?

Secure this property
for up to **59% less!**

Price

£205,000

Leasehold

2x  2x  1x 

**The Old Brewery,
London Road,
Horndean,
Waterlooville,**

cubitt&west
Helping you move forwards



Main features

- Well presented first floor apartment, located in Horndean
- Secluded courtyard giving you your own outdoors space
- Two allocated parking spaces undercover
- Close to local shops, pharmacy, bus links and A3 access
- Offered with no forward chain

Accommodation

FIRST FLOOR

Entrance Hall

Lounge/Kitchen: 16'6 x 15'4 (5.03m x 4.68m)

Bedroom 1: 10'3 x 9'3 (3.13m x 2.82m)

En-Suite Shower Room

Bedroom 2: 10'3 x 8'6 (3.13m x 2.59m)

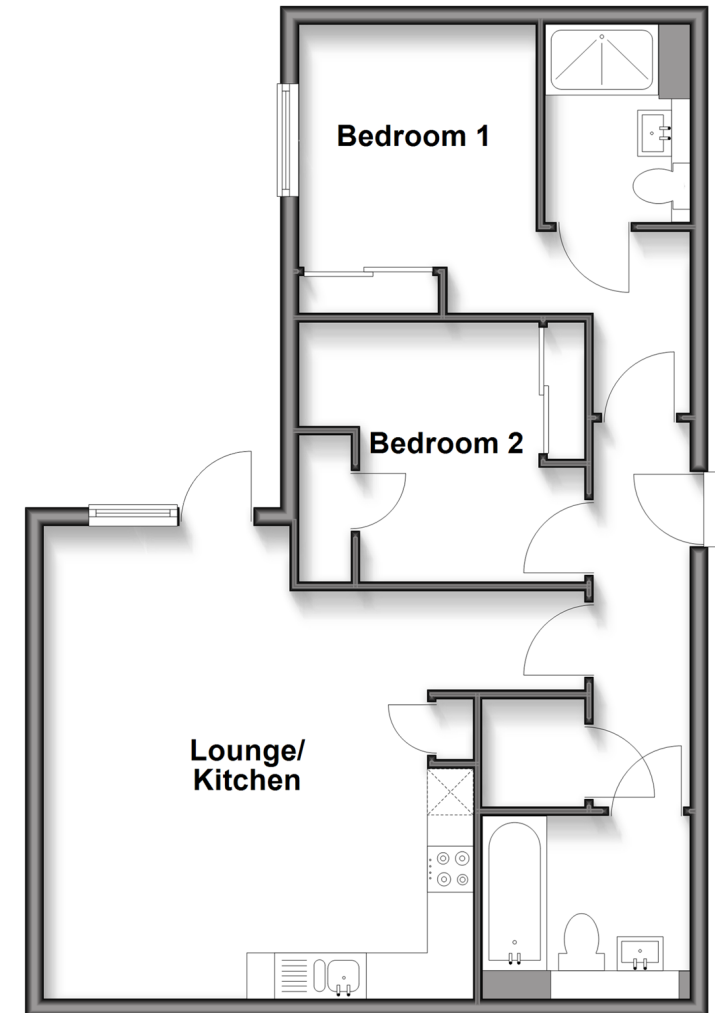
Bathroom

OUTSIDE

2 Allocated Parking Spaces

First Floor

Approx. 59.3 sq. metres (638.4 sq. feet)



Call Waterloo - 02392 267244 ■ cubittandwest.co.uk

- Legal advice should be taken to verify fixtures/fittings, planning, alterations and/or lease details
- Appliances & services are untested, dimensions are approximate and floor plans are not to scale
- Through a Homewise Home For Life Plan people aged 60+ can secure this property for up to 59% less, by purchasing a Lifetime Lease.



42410727/20250716/EH/EC