



JOWEBSTER

Apartment B22
The Montevetro Building, SW11



Property Attributes

- Entrance Hall
- Kitchen
- Reception Area
- One Bedroom
- Balcony
- Family Bathroom
- 24 Hour Concierge/Security
- Gym
- Tennis Court
- Secure underground parking for one car



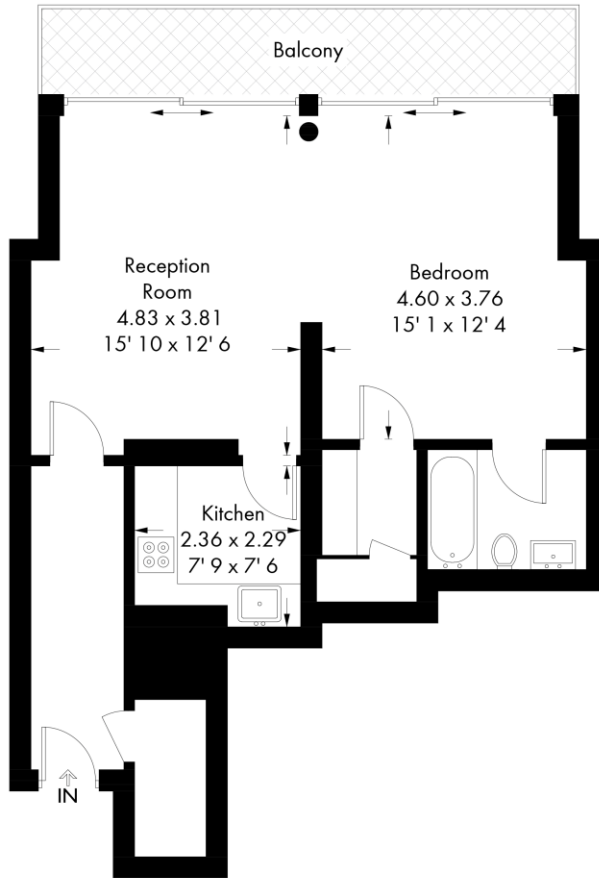
Terms

- Price: £825,000
- Borough: London Borough of Wandsworth
- Tenure: Share of Freehold
- Service Charge: Approx. £10,173 per annum
- Ground Rent: Peppercorn
- Council Tax Band: Band G



Montevetro

Approximate Gross Internal Area = 653 sq ft / 60.7 sq m



Second Floor

Not to scale, for guidance only and must not be relied upon as a statement of fact
All measurements and areas are approximate only and have been prepared in
accordance with the current edition of the RICS Code of Measuring Practice

+44 (0) 20 7349 7055
sales@jowebster.com

Misdescription Act

We wish to advise prospective purchasers that these sales particulars are believed to be correct, but their accuracy is in no way guaranteed, nor do they form any part of contract. We have not carried out a detailed survey nor tested the services, appliances or specific fittings. Measurements are approximate.