



The Avenue, TW16

£1,295 Per calendar month

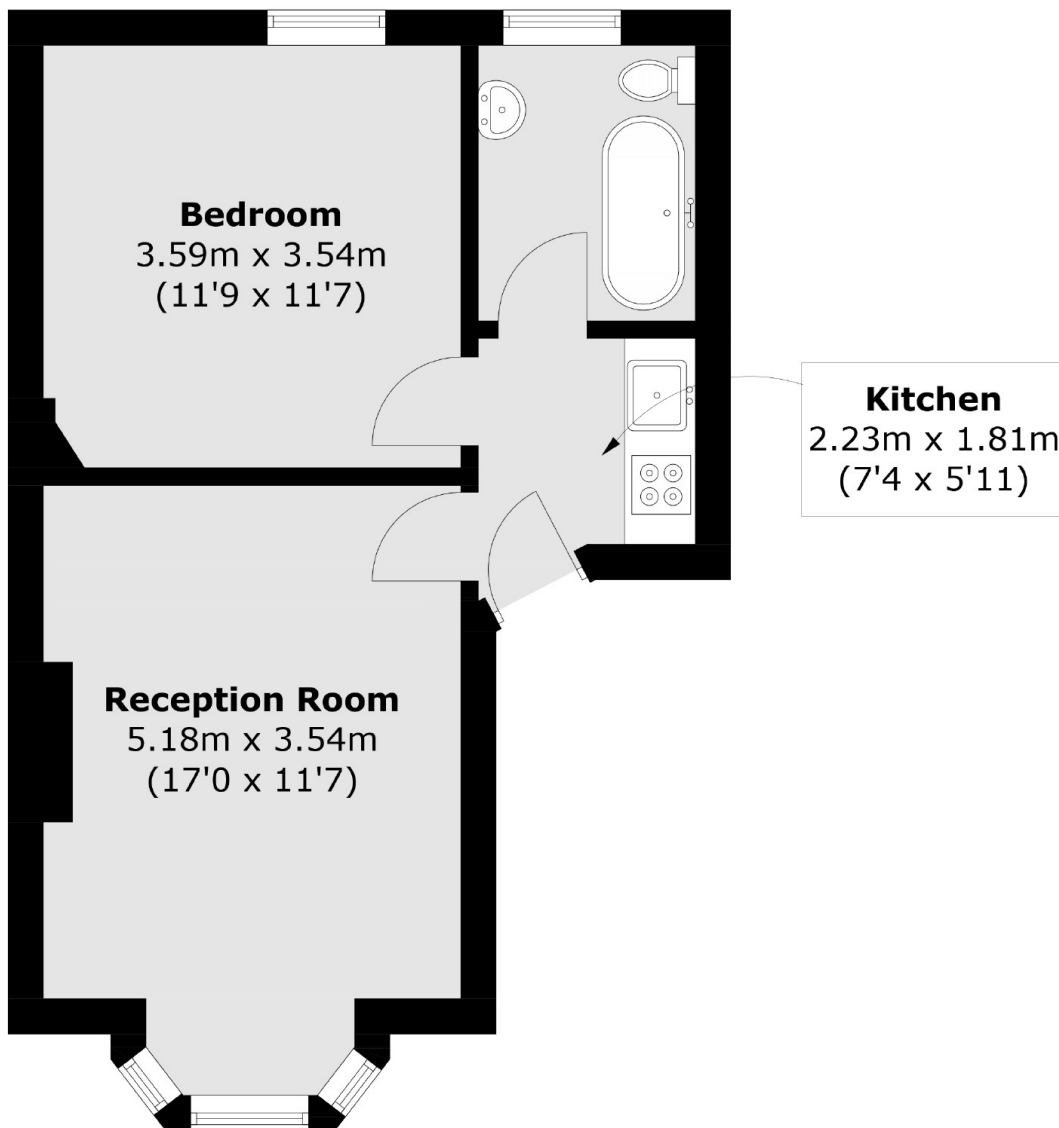
This fantastic one double bedroom flat, with stunning views overlooking the Meadow, is perfect for a single or professional couple looking to be in the heart of the Sunbury Village.

The Avenue is a popular, tree lined, residential road leading to the heart of Sunbury Village. There is easy street parking, convenience shops and the Walled Gardens within easy walking distance.

Features

- One Double Bedroom
- Modern
- High Ceilings
- Feature Fireplace
- Street Parking
- Close To The River

The Avenue, Sunbury-On-Thames, TW16



Total area (approx.): 38.8 sq. m (417.6 sq. ft)