



YORKSHIRE'S
FINEST
HOMES COLLECTION



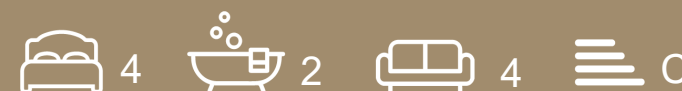
Jumeria, Latham Lane, Gomersal

Offers In The Region Of

£1,400,000

- Four generous bedrooms
- Indoor heated swimming pool with leisure suite
- Open-plan designer Rotpunkt kitchen with AEG appliances
- Multiple reception rooms including 40ft living room
- Principal suite with dressing area, study & luxury en-suite
 - Triple garage with flexible use (gym/cinema potential)
 - Underfloor heating throughout
 - Landscaped gardens extending to approximately half an acre
- Secure gated driveway in a private setting

Private Gomersal estate offering luxury living with spacious interiors, designer kitchen, indoor pool, and landscaped grounds, blending seclusion with easy access to Leeds and Bradford.



A Private Estate of Quiet Distinction

Beyond a set of understated electric gates, in one of Gomersal's most exclusive and discreet enclaves, Jumeira reveals itself, not with ostentation, but with quiet confidence. Built in 2001 and meticulously reimaged over time, this is a residence shaped by intention, craftsmanship and an instinctive understanding of modern luxury living.

Surrounded by sweeping grounds and an air of complete privacy, the home offers a rare balance: connectivity to Leeds and Bradford when needed, and a sense of retreat when it's not.

Arrival

The approach is deliberate. A covered veranda softens the transition from outside to in, a place to pause, to take in the stillness, before stepping into a reception hall that immediately establishes the tone of the home.

Underfoot, solid oak flows throughout, warmed by underfloor heating. A reclaimed staircase rises with quiet grandeur, its presence both architectural and inviting. Materials here are honest, tactile, enduring, chosen not just for how they look, but for how they feel.

The Art of Living

At the heart of Jumeira lies a sequence of living spaces designed not simply to impress, but to be lived in.

The principal living room unfolds across an extraordinary footprint, wrapped in light from three elevations. Arched windows frame the gardens like moving artwork, while a substantial stone fireplace anchors the space with a sense of permanence. It is a room that shifts effortlessly with the seasons, expansive yet intimate, grand yet deeply personal.

There is history here too, a room known affectionately as the setting for winter gatherings, where music carries, conversation lingers, and the scale of the space comes alive.

The Kitchen as a Statement

The kitchen is both centrepiece and meeting place.

Crafted by Rotpunkt, its design is clean, architectural, and quietly striking. Contrasting tones of soft grey cabinetry are paired with luminous Corian surfaces, subtly lit to create the illusion of weightlessness. Every element has been integrated with precision, a suite of AEG appliances ensuring performance matches aesthetic.





The central island becomes the natural axis of the home, a place where mornings begin and evenings unfold. Beyond, the dining space continues the same visual language, with marble-effect flooring creating a seamless transition between zones. Large doors dissolve the boundary between interior and exterior, opening onto a terrace designed for long, unhurried evenings beneath open skies.

Spaces to Unwind

A more intimate lounge, the snug, offers contrast. Here, the atmosphere softens. A contemporary media wall and living flame fire introduce warmth and texture, while direct access to the terrace invites moments of quiet retreat.

A Private Leisure Level

Below, the house reveals an entirely different dimension. The leisure suite has been conceived as a private spa, a space where design and experience are equally considered. The indoor pool, finished in refined grey tones, sits beneath carefully integrated lighting that traces the architecture and reflects across the water.

Function is discreetly handled: a retractable cover, rainfall showers, and climate control all work seamlessly behind the scenes.

Flowing from this is a generous entertaining space, anchored by a fully equipped bar and designed for gathering. Whether hosting winter pool evenings or summer garden parties, the transition between inside and out is effortless, with large openings leading directly onto a paved terrace.

Form Meets Function

Practicality is woven seamlessly into the design. A fully fitted utility room, additional cloakroom and dedicated plant space ensure the home operates as beautifully as it presents.

A triple garage, currently configured as a gym, offers further flexibility, easily adapted to suit lifestyle, whether as a private studio, cinema or secure storage.

Above

Upstairs, the atmosphere shifts again.

A galleried landing introduces volume and light, leading to a balcony terrace positioned perfectly to capture the evening sun, an elevated vantage point that brings a sense of calm perspective.

The Principal Suite

The principal suite is conceived as a self-contained retreat. The bedroom itself is serene and spacious, softened by vaulted ceilings and carefully framed light. A dedicated dressing area introduces structure and organisation, while a private study provides separation, a place for focus or reflection. The en-suite bathroom has been finished with a restrained, contemporary palette: marble-effect porcelain, clean lines, and thoughtfully integrated features including a jacuzzi bath, walk-in shower and twin vanity. It is a space designed not just for function, but for ritual.

Further Accommodation

Each additional bedroom has been designed with equal care, generous in proportion, filled with natural light, and finished with fitted storage. The overall effect is one of cohesion, where every room feels considered and complete. The family bathroom mirrors the same design ethos, combining simplicity with quiet luxury through a freestanding bath, walk-in shower and refined detailing.

The Grounds

Set within just under half an acre, the grounds are as carefully curated as the interiors. Manicured lawns, mature planting and thoughtfully designed outdoor areas create a landscape that evolves with the seasons. At its centre, a pond, complete with its own bridge, introduces movement, wildlife and a sense of charm that feels almost storybook in nature. There is space here for both play and pause: a treehouse for younger residents, terraces for entertaining, and quiet corners for reflection. An integrated irrigation system ensures effortless maintenance, while proposed plans for a contemporary outbuilding present an opportunity for further enhancement.

A Home with Presence

Jumeira is not defined by a single feature, but by the way everything comes together, architecture, setting, material and atmosphere. It is a home that understands both occasion and everyday life. A place designed for gathering, for retreating, and for living exceptionally well.









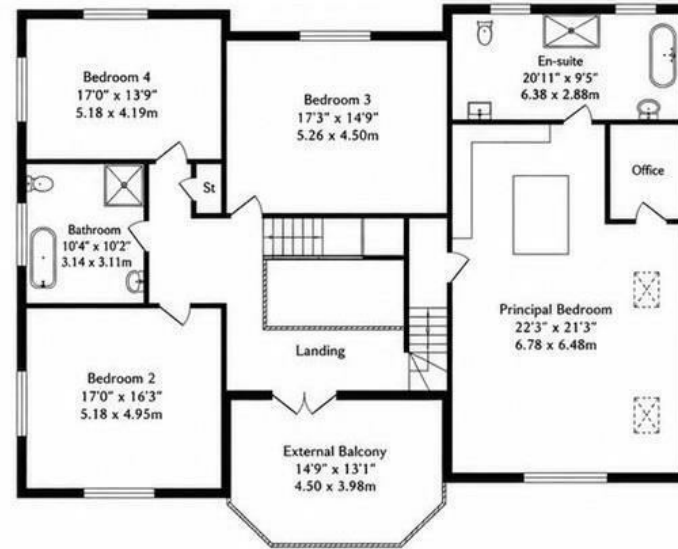




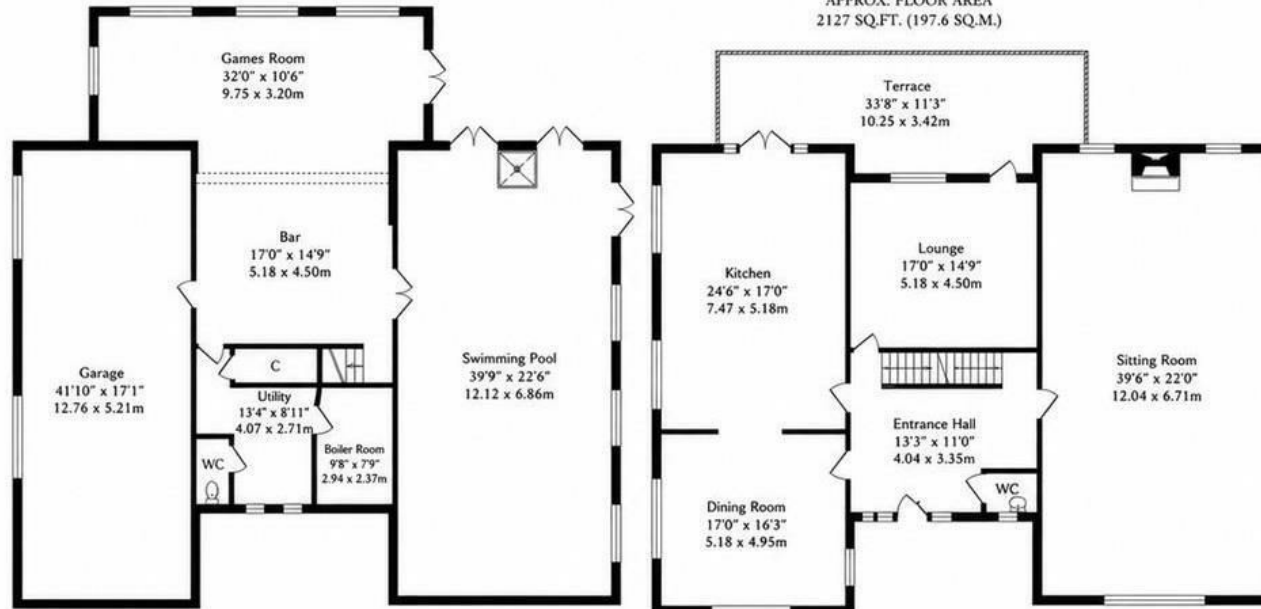








FIRST FLOOR
 APPROX. FLOOR AREA
 2127 SQ.FT. (197.6 SQ.M.)



LOWER GROUND FLOOR
 APPROX. FLOOR AREA
 2561 SQ.FT. (237.9 SQ.M.)

GROUND FLOOR
 APPROX. FLOOR AREA
 2127 SQ.FT. (197.6 SQ.M.)



YORKSHIRE'S
FINEST
HOMES COLLECTION

To view Jumeria, Latham Lane, Gomersal
Call 01484 432 773
Email sales@yorkshiresfinest.co.uk