



18 Lulworth Drive, Hindley Green, WN2 4QS Offers in excess of £180,000

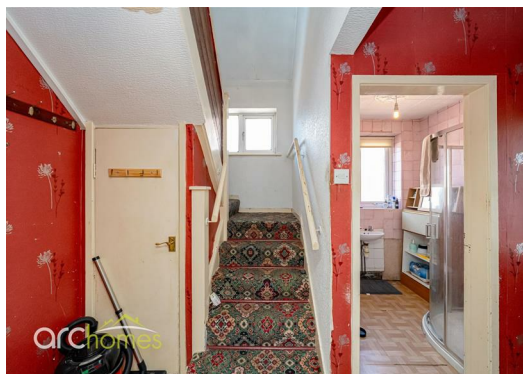
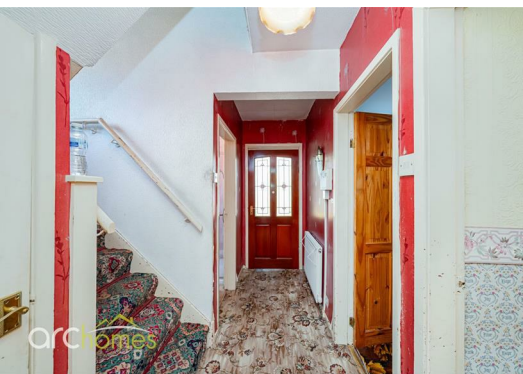
ARC HOMES in Hindley are delighted to offer FOR SALE this three-bedroom semi-detached dormer bungalow, ideally situated within a popular residential location in Hindley Green. Offered with no onward chain, this property would benefit from some modernisation but offers excellent potential and occupies a larger-than-average corner plot. Early viewing is recommended.

The accommodation is entered via an entrance porch and hallway. To the rear of the property is a well-proportioned sitting room together with a fitted kitchen, while to the front is a generous double bedroom and shower room. To the first floor are two further well-proportioned bedrooms, offering flexible accommodation. Externally, the property enjoys a larger-than-average corner plot with generous gardens and ample off-road parking.



Energy Efficiency Rating		
	Current	Potential
Very energy efficient - lower running costs		
(92 plus) A		
(81-91) B		
(69-80) C		
(55-68) D		
(39-54) E		
(21-38) F		
(1-20) G		
Not energy efficient - higher running costs		
England & Wales	EU Directive 2002/91/EC	

Environmental Impact (CO ₂) Rating		
	Current	Potential
Very environmentally friendly - lower CO ₂ emissions		
(92 plus) A		
(81-91) B		
(69-80) C		
(55-68) D		
(39-54) E		
(21-38) F		
(1-20) G		
Not environmentally friendly - higher CO ₂ emissions		
England & Wales	EU Directive 2002/91/EC	



105 Market Street Hindley, WN2 3AA

T. 01942 363599
info@arc-homes.net

