



## Pantyscallog Houses, offers over £335,000

- No onward chain
- Beautifully presented throughout
- Ideal family home or potential air BnB
- Master with en-suite
- Close to local amenities
- Great transport links
- EPC Rating: C





## About the property

This well-presented four-bedroom detached family home is ideally located in the popular area of Pant, Merthyr Tydfil and is offered to the market with no onward chain, making it an excellent opportunity for families.

The accommodation is well-presented throughout and centres around a stunning open-plan living room, kitchen and dining area, creating a bright and sociable space ideal for modern family living. Large windows and doors provide attractive views over the rear garden, allowing plenty of natural light to flow through the home.

Upstairs, the property offers four bedrooms, including a master bedroom with en suite while the remaining bedrooms are served by a well-appointed family bathroom.

Externally, the home benefits from a driveway providing off-road parking, along with a well-maintained rear garden, perfect for relaxing or entertaining.

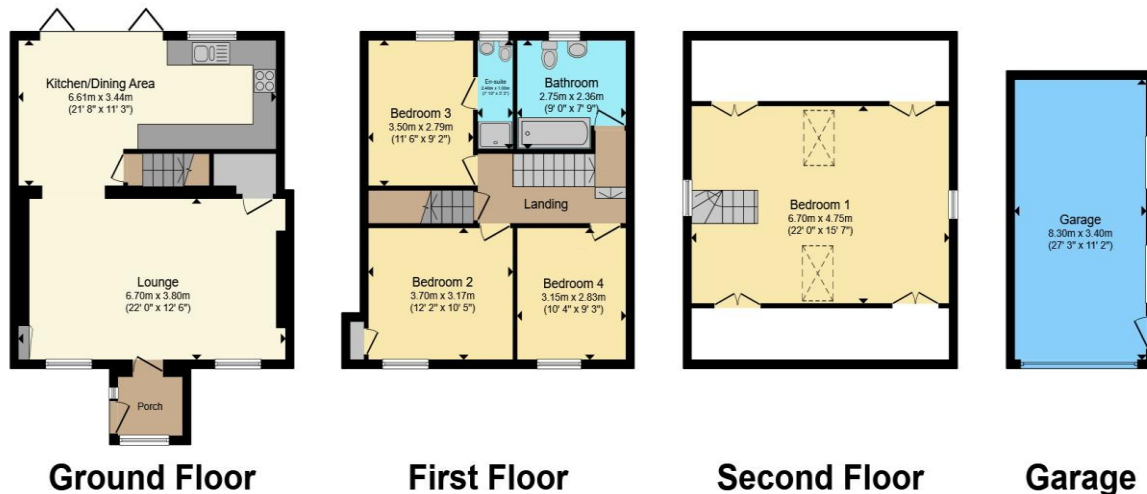


Accommodation

01685 722223

merthyrdyfil@peteralan.co.uk

## Floorplan



Total floor area 162.2 m<sup>2</sup> (1,746 sq.ft.) approx

This floor plan is for illustrative purposes only. It is not drawn to scale. Any measurements, floor areas (including any total floor area), openings and orientation are approximate. No details are guaranteed, they cannot be relied upon for any purpose and they do not form part of any agreement. No liability is taken for any error, omission or misstatement. A party must rely upon its own inspection(s). Powered by [www.propertybox.io](http://www.propertybox.io)



## Important Information

Note while we endeavour to make our sales details accurate and reliable, if there is any point which is of particular interest to you, please contact the office and we will be pleased to confirm the position for you. We have not personally tested any apparatus, equipment, fixtures, fittings or services and cannot verify they are in working order or fit for their purposes. Nothing in these particulars is intended to indicate that carpets or curtains, furnishings or fittings, electrical goods (whether wired or not). Gas fires or light fittings or any other fixtures not expressly included form part of the property offered for sale. This computer generated Floorplan, if applicable, is intended as a general guide to the layout and design of the property. It is not to scale and should not be relied upon for dimensions. Tenure: We cannot confirm the tenure of the property as we have not had access to the legal documents. The buyer is advised to obtain verification from their solicitor or surveyor.

Peter Alan Limited is registered in England and Wales under company number 2073153, Registered Office is Cumbria House, 16-20 Hockliffe Street, Leighton Buzzard, Bedfordshire, LU7 1GN. VAT Registration Number is 500 2481 05. For activities relating to regulated mortgages and non-investment insurance contracts, Peter Alan Limited is an appointed representative of Connells Limited which is authorised and regulated by the Financial Conduct Authority. Connells Limited's Financial Services Register number is 302221. Most buy-to-let

