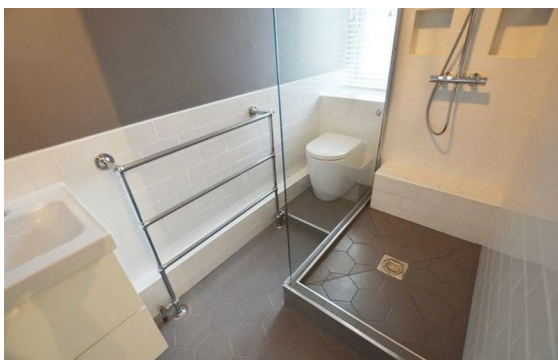
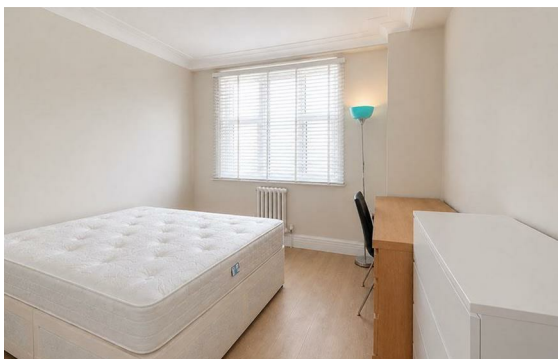


Dorset Square, Marylebone, London, NW1

Rent £1,245 PCM

3 Bed | 2 Bath | 1 Reception

Please call us on 020 7724 2233 or email us info@newingtonstates.com to book a viewing.



60 Upper Montagu Street

London

W1H 1SN

020 7724 2233

info@newingtonstates.com

A well-proportioned three-bedroom apartment offering generous living space and excellent natural light in a prime central London setting. The property features a large reception room, a separate fitted kitchen, and three well-sized double bedrooms, complemented by two bathrooms. Multiple windows create a bright and airy atmosphere throughout, while wooden flooring and ample storage enhance comfort and practicality.

Ideally located close to Marylebone Station and Baker Street Station, with easy access to Regent's Park, Hyde Park, and the amenities of Edgware Road.

EPC Rating: C

Energy Efficiency Rating: C

Agents Note: Whilst every care has been taken to prepare these particulars, they are for guidance purposes only. All measurements are approximate and are for general guidance purposes only and whilst every care has been taken to ensure their accuracy, they should not be relied upon and potential buyers/tenants are advised to recheck the measurements.

<http://www.newingtonstates.com>