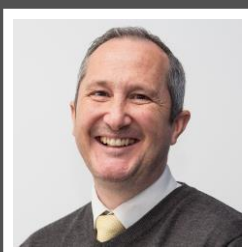


Love Homes



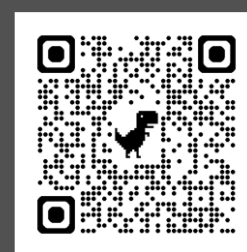
59 High Street, Greenfield, Bedfordshire, MK45 5DD

Individually designed three-bedroom home offering approximately 1,242 sq.ft. of well-planned accommodation. The welcoming entrance hall with cloakroom leads to a spacious dual-aspect living room with French doors opening onto the rear garden. A stylish re-fitted kitchen/dining room forms the heart of the home, ideal for family life and entertaining. Upstairs, the main bedroom benefits from a re-fitted en-suite, while two further bedrooms share a stunning family bathroom with walk-in shower. Outside, a detached double garage with electric doors, driveway parking, and a secluded lawned garden with raised decking complete this impressive home.



This property is presented by Duncan Stead - a Love Homes property expert with over 25 years' experience.

Find out more about this property by scanning the QR code.



1.4m



3



1



2

Tenure: Freehold

Council Tax: C



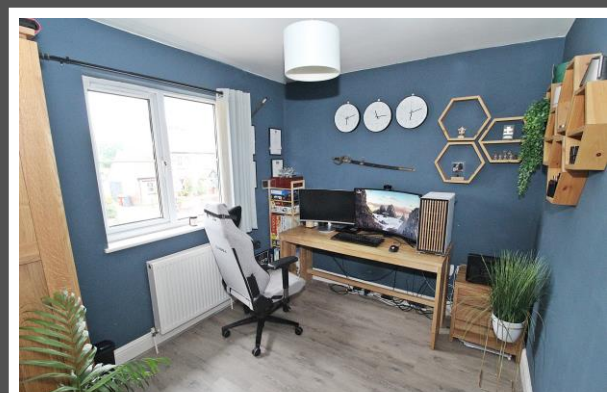
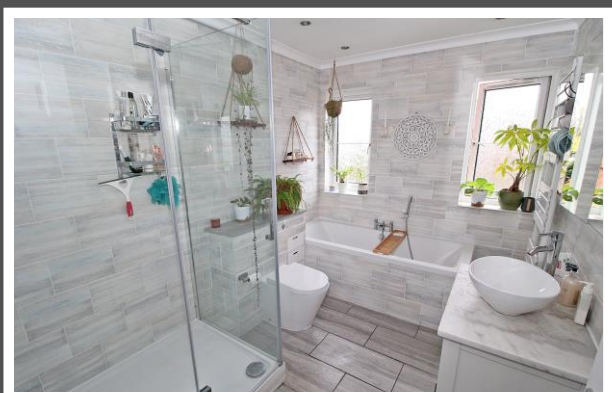
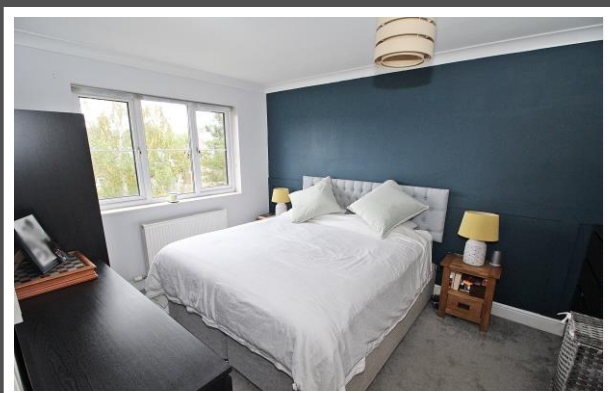
Selling properties in **Flitwick**, Silsoe, **Amphill**, Toddington, **Barton Le Clay**, Clophill and surrounding villages





The villages of Flitton and Greenfield are perfect for those looking for village life, surrounded by fields but with the convenience of nearby transport links and modern facilities. Greenfield and Flitton are just 1.5 miles (approx.) from Flitwick with an excellent mainline rail service into St Pancras in under 45 minutes, and the M1 (Junction 12) is just 4 miles away. Greenfield and Flitton boasts public houses with a highly regarded lower school in Greenfield, along with delightful nearby countryside walks. With a church in the heart of Flitton.

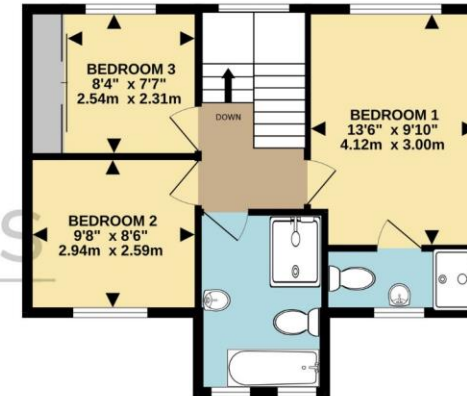
Further nearby facilities include a modern leisure centre in Flitwick and the historic Georgian market town of Ampthill, with a Waitrose supermarket, a variety of restaurants, boutique shops, and parkland.



GROUND FLOOR
769 sq.ft. (71.5 sq.m.) approx.



1ST FLOOR
472 sq.ft. (43.9 sq.m.) approx.



TOTAL FLOOR AREA : 1242 sq.ft. (115.4 sq.m.) approx.
Drawn by Love Homes for illustrative purposes only. Measurements and areas shown are approximate.
Made with Metropix ©2025

Score	Energy rating	Current	Potential
92+	A		
81-91	B		81 B
69-80	C	76 C	
55-68	D		
39-54	E		
21-38	F		
1-20	G		

5 The Russell Centre, Coniston Road, Flitwick, MK45 1QY
Tel: 01525 713111

Email: flitwick@lovehomes.uk

www.lovehomes.uk



These particulars are set out as a general outline in accordance with the Property Misdescriptions Act (1991) only for the guidance of intending purchasers or lessees, and do not constitute any part of an offer or contract. Details are given without any responsibility, and any intending purchasers, lessees or third parties should not rely on them as statements or representations of fact but must satisfy themselves by inspection or otherwise as to the correctness of each of them. We have not carried out a structural survey and the services, appliances and specific fittings have not been tested. All photographs, measurements, floor plans and distances referred to are given as a guide only and should not be relied upon for the purchase of carpets or any other fixtures or fittings. Gardens, roof terraces, balconies and communal gardens as well as tenure and lease details cannot have their accuracy guaranteed for intending purchasers. Lease details, service ground rent (where applicable) are given as a guide only and should be checked and confirmed by your solicitor prior to exchange of contracts. No person in the employment of Love Homes has any authority to make any representation or warranty whatever in relation to this property. Purchase prices, rents or other prices quoted are correct at the date of publication and, unless otherwise stated, are exclusive of VAT. We retain the copyright in all advertising material used to market this Property. All information is as advised by the seller and subject to change. Council tax bands can be subject to change by the local council.

Love Homes