



Beardsley Way, W3

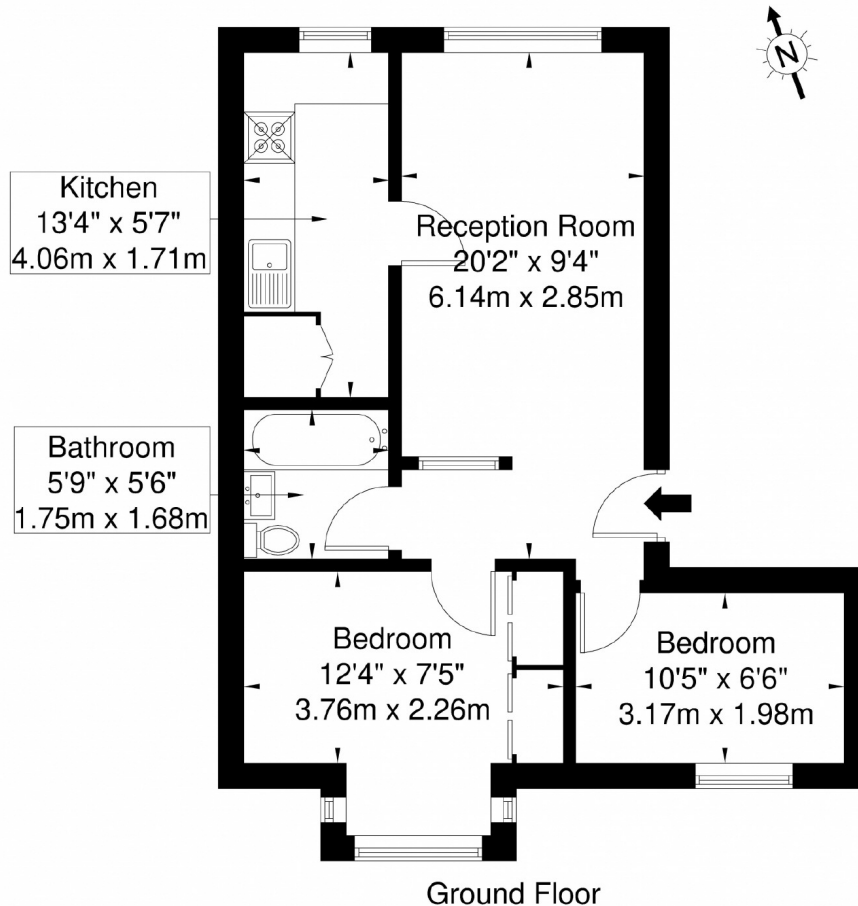
£300,000

A purpose built two bedroom apartment on the borders of Chiswick. This ground floor flat has allocated off street parking and is offered with no onward chain. Perfect for first time buyers and investors alike.

Beardsley Way is located between Acton Park and Southfield Recreation Ground and within 500 metres of Acton Central station and the shops and amenities of Churchfield Road.

Beardsley Way W3 7YQ

Approx. Gross Internal Area = 45.4 sq m / 488 sq ft



Ref

Copyright THE BLEU PLAN

Disclaimer : Floor plan measurements are approximate and are for illustrative purposes only. While we do not doubt the floor plan accuracy and completeness, you or your advisors should conduct a careful, independent investigation of the property in respect of monetary valuation.

Robertson Smith & Kempson Acton Sales
137 High Street, Acton,
London, W3 6LY
020 8896 3996
actonsales@robertsonsmithandkempson.co.uk

Energy Rating: C. We aim to make our particulars both accurate and reliable. However they are not guaranteed; nor do they form part of an offer or contract. If you require clarification on any points then please contact us, especially if you're traveling some distance to view. Please note that appliances and heating systems have not been tested and therefore no warranties can be given as to their good working order.