



6 Oakley Close, Holbury
£295,000



ANTHONY JAMES
PROPERTIES



6 Oakley Close

Holbury, Southampton

This spacious terraced house offers versatile accommodation throughout. Internally there are up to four bedrooms, a large lounge, an open plan kitchen/conservatory, a utility room and a stylish shower room. Outside of the property is an enclosed rear garden and driveway parking to front. Further features include UPVC double glazing and gas central heating. An internal viewing is strongly recommended to fully appreciate the accommodation on offer.

Council Tax band: B

Tenure: Freehold



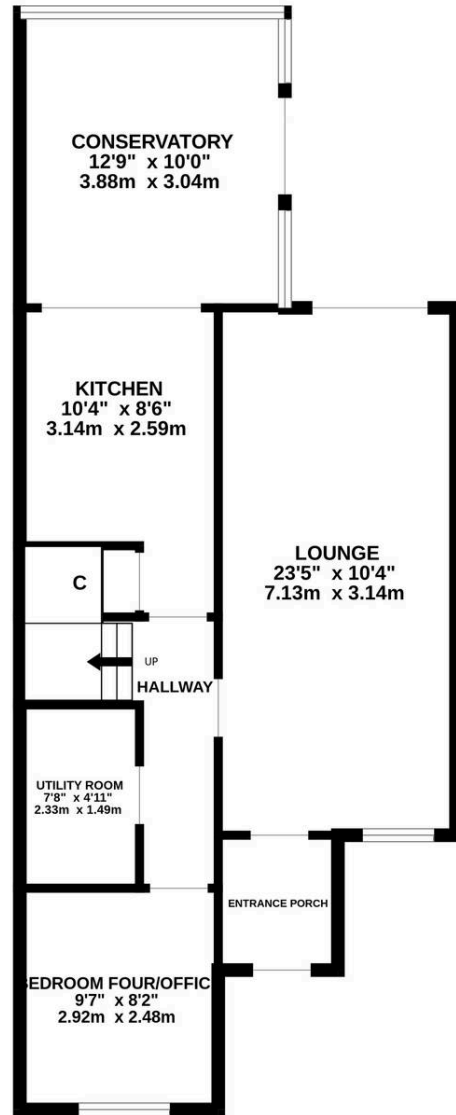
1 Southward House
Dibden Purlieu SO45 4PT



T: 02380 844405
info@anthonyjamesproperties.co.uk



GROUND FLOOR



1ST FLOOR

